

olivetti



MY_WAY *plus* USER GUIDE

Edited/Published/Produced by:
Olivetti S.p.A.
Gruppo Telecom Italia
Via Jervis, 77
Ivrea (TO)
Italy
www.olivetti.com

Copyright © Olivetti, 2006
All rights reserved

Ref: 527604gb

Date of publication: July 2006

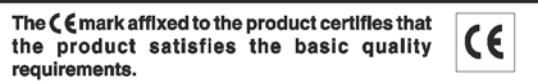
Trademarks: *Microsoft* and *Windows* are registered trademarks of Microsoft Corporation.

Other trademarks and trade names may be used in this document to refer to either the entities claiming the marks and names or their products. Olivetti disclaims any proprietary interest in trademarks and trade names other than its own.



ENERGY STAR is a U.S. registered mark.

The ENERGY STAR program is an energy reduction plan introduced by the United States Environmental Protection Agency in response to environmental issues and for the purpose of advancing the development and utilization of more efficient office equipment.



CONTENTS

1	GETTING STARTED	1
	OVERVIEW	2
	SAFETY INSTRUCTIONS	2
	INFORMATION ABOUT PRINT QUALITY AND THE WARRANTY	2
	LOCATING YOUR PRINTER'S COMPONENTS	3
	PRINTER CONTROL PANEL	5
	LOADING PAPER	7
	Loading Paper in the Paper Cassette	7
	Loading a Single Sheet of Plain A4 Paper Folded Vertically in the Middle	7
	POWERING YOUR PRINTER	8
	Choosing the Power Source For Your Printer	8
	TURNING YOUR PRINTER ON AND OFF	9
	Turning On Your Printer	9
	Turning Off Your Printer	9
	CONNECTING A DIGITAL CAMERA TO YOUR PRINTER	10
	INSERTING AND REMOVING MEMORY CARDS	10
	Inserting a Memory Card	10
	Removing a Memory Card	11
	CARRYING YOUR PRINTER	12
	REMOVING THE PAPER CASSETTE FROM THE BOTTOM OF THE PRINTER	12
	PRINT SETTINGS IN BLUETOOTH MODE	13
2	USING YOUR PRINTER WITHOUT A COMPUTER	15
	VIEWING PHOTOS ON YOUR PRINTER'S DISPLAY	16
	Full-Screen Views	16
	Thumbnail Views	17
	Improving the Photo's Print Quality	17
	SELECTING AND PRINTING PHOTOS FROM YOUR MEMORY CARD	17
	PRINTING PHOTOS FROM YOUR PICTBRIDGE-COMPLIANT DIGITAL CAMERA	18
	SELECTING AND PRINTING PHOTOS FROM YOUR DPOF DIGITAL CAMERA	18

SELECTING AND PRINTING PHOTOS FROM YOUR NON-PICTBRIDGE/DPOF DIGITAL CAMERA	19
PRINTING PHOTOS FROM A BLUETOOTH PERIPHERAL	20
3 USING YOUR PRINTER FROM A COMPUTER	21
BEFORE YOU BEGIN	22
THE TOOLBOX	22
THE PRINTER STATUS MONITOR	23
PRINTING	24
Printing From Your Application Using Print Properties	24
Printing with the Toolbox Print Photos Tool	25
TRANSFERRING FILES FROM A MEMORY CARD TO YOUR COMPUTER ..	26
SETTING THE PARAMETERS TO IMPROVE PHOTO PRINT QUALITY	26
4 THE INK CARTRIDGE	27
CHECKING THE INK LEVEL	28
REPLACING THE INK CARTRIDGE	29
ALIGNING THE INK CARTRIDGE	31
Aligning the Ink Cartridge From the Toolbox	31
5 MAINTENANCE AND TROUBLESHOOTING	33
CLEANING YOUR PRINTER	34
Cleaning the Printer Casing	34
CLEANING THE INK CARTRIDGE NOZZLES	34
TROUBLESHOOTING	35
Problems During Printer Setup	35
Problems When Powering On the Printer	38
Printing Problems	38
Meaning of the Indicators on the Control Panel	39
CLEARING PAPER JAMS	39

6 TECHNICAL CHARACTERISTICS	41
GENERAL SPECIFICATIONS	42
PRINTER SPECIFICATIONS	43
PAPER SPECIFICATIONS	44
Supported Paper Types	44
 INDEX	 45

MIPC (Mobile Imaging and Printing Consortium)

The MIPC is a non-profit industry association founded in 2004 by leading companies in photo printing and the mobile phone industry. Its mission is to promote and support the development of interoperability guidelines enabling printing of images and other content between mobile phones and printing devices. The guidelines are promoted for use internationally to ensure a broad spectrum of products and services for mobile phone consumers. <http://www.mobileprinting.org>

MY_WAY plus: This Mobile Printing Ready product is designed to provide easy printing from mobile phones. This product follows Mobile Imaging and Printing Consortium (MIPC) Implementation Guidelines for Printing with Mobile Terminals, Version 1.0, for: Bluetooth, PictBridge, Memory Card.

1 GETTING STARTED

OVERVIEW

SAFETY INSTRUCTIONS

INFORMATION ABOUT PRINT QUALITY AND THE WARRANTY

LOCATING YOUR PRINTER'S COMPONENTS

PRINTER CONTROL PANEL

LOADING PAPER

POWERING YOUR PRINTER

TURNING YOUR PRINTER ON AND OFF

CONNECTING A DIGITAL CAMERA TO YOUR PRINTER

INSERTING AND REMOVING MEMORY CARDS

CARRYING YOUR PRINTER

REMOVING THE PAPER CASSETTE FROM THE BOTTOM OF THE PRINTER

PRINT SETTINGS IN BLUETOOTH MODE

OVERVIEW

This product carries out the functions of a high quality ink-jet portable printer and is characterized by reduced weight and wireless operating mode.

The printer is fitted with a 3-color head for high quality printing of photographs on photographic paper or plain paper without borders.

The printer can be powered with rechargeable batteries and is equipped with a Bluetooth interface for wireless connection from a mobile phone, to become an inseparable companion during your leisure time.

It can be used in the handy PC-free or stand-alone mode in which it is possible to print 10x15 cm (4"x6") format photographs simply connecting a PictBridge-compatible, DPOF or non PictBridge/DPOF digital camera to the USB interface, without having to connect the printer to a computer and therefore without having to switch on the PC. It is also possible to insert memory cards in the related slots on the side panel of the printer for selection and printing of the photos saved.

Photographs can be printed directly from a mobile phone via wireless technology using the Bluetooth interface integrated in the printer.

The printer can be connected to a personal computer on the second USB interface.

In this case, as in PC-free mode, the Olivetti Toolbox application can be used for fast access to all available capabilities, to use the document management software and the additional software available on the "Installation" CD-ROM.

note: If you want to connect the printer to a personal computer, this must use the Microsoft Windows 98 SE, Me, 2000 or XP operating system, or MAC OS X 10.2 or higher version.

SAFETY INSTRUCTIONS

Carefully read and follow the information indicated below:

- Connect the power cord to an electrical outlet that is near the product and easily accessible.
- Do not use your printer near water or with wet hands.
- Do not expose your printer to rain or moisture.
- Do not attempt to disassemble your printer.
- Observe all warnings and instructions marked on your printer.
- Read and understand all the documentation that came with your printer.

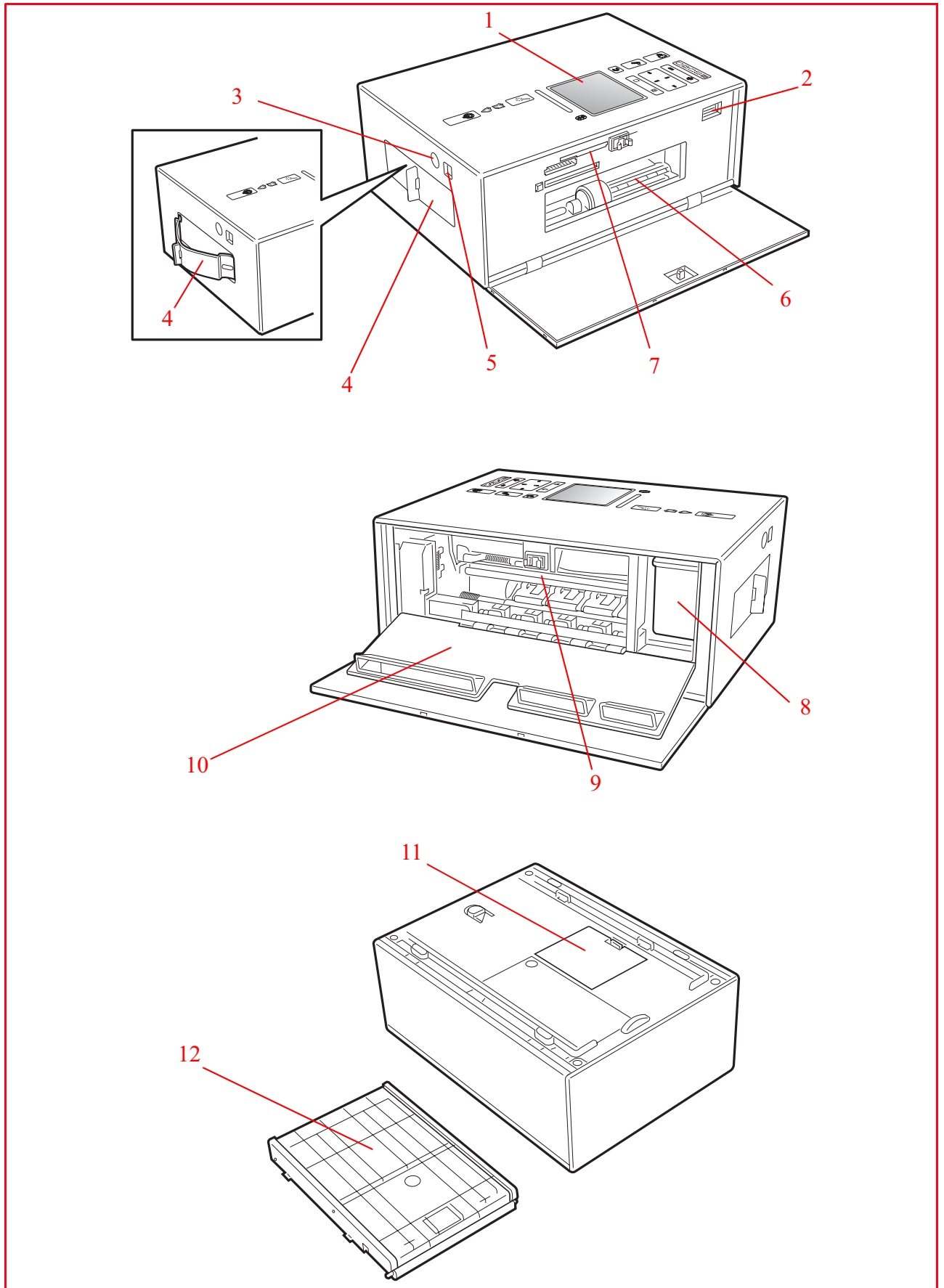
note: This product works correctly and complies with safety norms when used with the CA power supply unit provided by the manufacturer. When using different power sources than those provided in the product packaging, it will be the user's responsibility to guarantee compliance with safety norms and with the correct power ratings that this product requires.

INFORMATION ABOUT PRINT QUALITY AND THE WARRANTY

To guarantee the correct operation of your printer and top quality printing, it is essential to use only Olivetti original ink cartridges.

Olivetti declines any responsibility for damage to your printer caused by the tampering with, or refilling of, the ink-jet cartridges. Such actions also imply forfeiture of the Warranty.

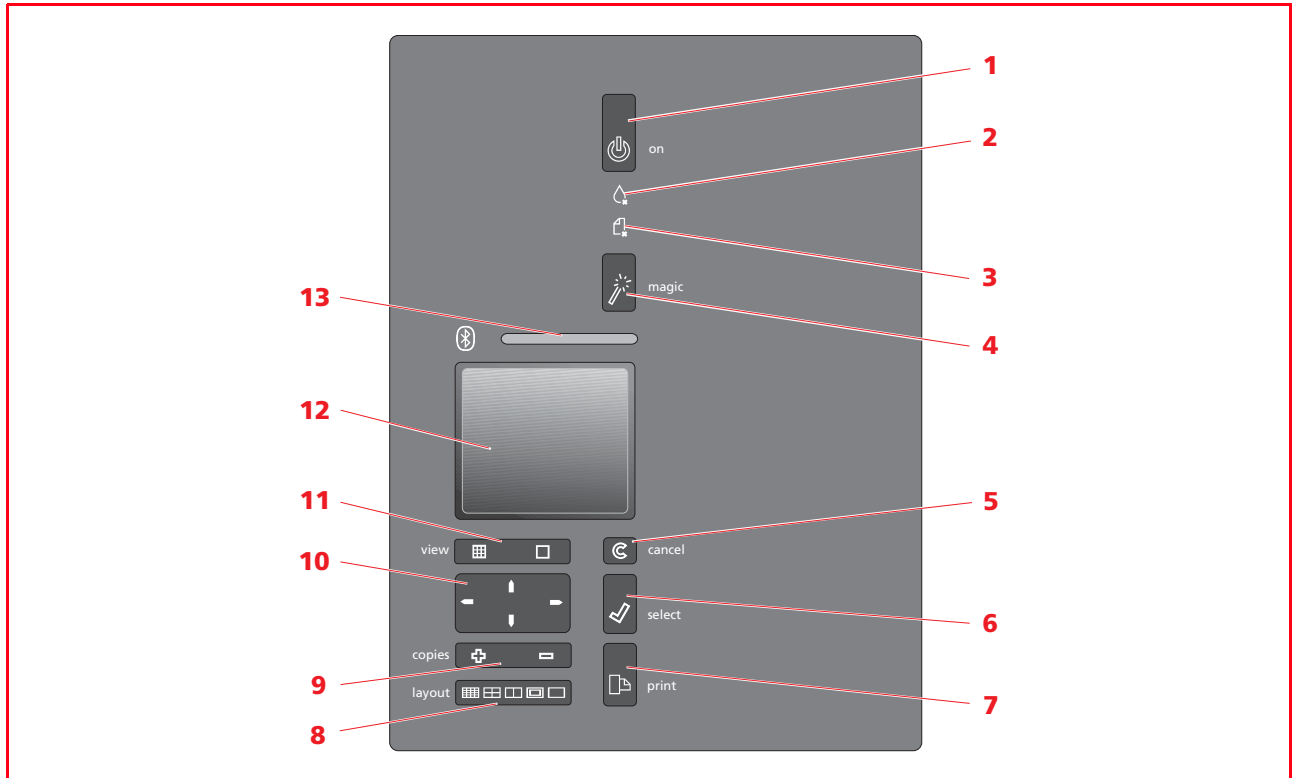
LOCATING YOUR PRINTER'S COMPONENTS



Reference	Part	Description
1	Control panel	Features the colour Liquid Crystal Display (LCD), the power button, Bluetooth activity indicator, error LEDs and a number of buttons that allow you to print and customize print jobs and indicators that signal out of ink and out of paper conditions. See "Printer Control Panel" for a description of the functions available.
2	USB interface	Plug the USB cable from your digital camera to print photographs directly from your camera.
3	Power connector	Connector into which you plug the printer's external AC power supply unit or car lighter AC adapter, both of which provided in the product packaging. note: Plug the external AC power supply unit into the printer first and then into the electrical outlet.
4	Carry handle	Extract this handle to carry your printer wherever you go.
5	High-speed USB interface	Plug the USB cable (not included) used for connection to your personal computer. Plug the other end of the cable to the computer.
6	Paper cassette insertion slot	Insert here the paper cassette after sliding it off the rails on the bottom of your printer.
7	Memory card slots	Insert your memory cards in these slots to read their contents and select the pictures that you want to print. See "Inserting and Removing Memory Cards". Can accommodate Compact Flash I, II, Microdrive, SmartMedia, SecurDigital and MultiMedia cards, Memory Sticks and xD-Picture cards.
8	Ink cartridge carrier	Holds the colour ink cartridge. For information on how to change the ink cartridge, see "Replacing the Ink Cartridge".
9	Paper exit slot and paper jam clearing area	Slot from where the printed sheet of paper exits the printer. Also used for clearing paper jams inside the printer. For information on how to clear paper jams, see "Clearing Paper Jams".
10	Right inner door	Closes the paper exit slot and ink cartridge carrier. Opening this door during a print job will interrupt the printing underway.
11	Battery compartment	Holds six rechargeable AA size 1.2 V Nickel Metal Hydride (NiMH) batteries, with a capacity of at least 2.2 to 2.5 Ah each, that power the printer when the external AC power supply unit or car lighter DC adapter is not used. note: The batteries must be fully charged when inserted in the printer. Make sure that you also have an appropriate battery charger (sold separately) so that you can recharge the batteries when they are discharged.
12	Paper cassette	Holds up to 20 sheets of 280 gm ² photo paper. When not used, the paper cassette can be secured underneath the printer.

PRINTER CONTROL PANEL

The control panel of the printer makes it possible to set printing of photos received from a digital camera connected to the printer, saved on the memory card inserted in the specific slot of the printer or received via a Bluetooth peripheral. The colour display can be used to scroll and display the photos. The panel includes various buttons that are used to select the photos required and to personalise printing of these. The icons on the buttons light up to indicate currently active functions.



Reference	Part	Description
1	On/Off button	Used to switch the printer ON and OFF.
2	Ink out indicator	Flashes or lights up to indicate that the ink cartridge is running out; in this case, it is advisable to replace the cartridge. See "Replacing of the ink cartridge".
3	Paper error indicator	<ul style="list-style-type: none"> Lights up to indicate that the paper is out. Lights up to indicate jamming of the paper. Lights up to indicate feeding of an incorrect paper format during printing.
4	Magic button	Press to improve the quality of all the photos that you have selected for printing. The new image generated is not displayed on the display or saved but is available for printing.
5	Cancel button	Permits immediate cancellation of current printing, causing ejection of the paper and restore of the default settings.
6	Selection button	Press this button to select the photo displayed on the LCD.
7	Print button	Press this button to print the photos selected. This button flashes during printing.

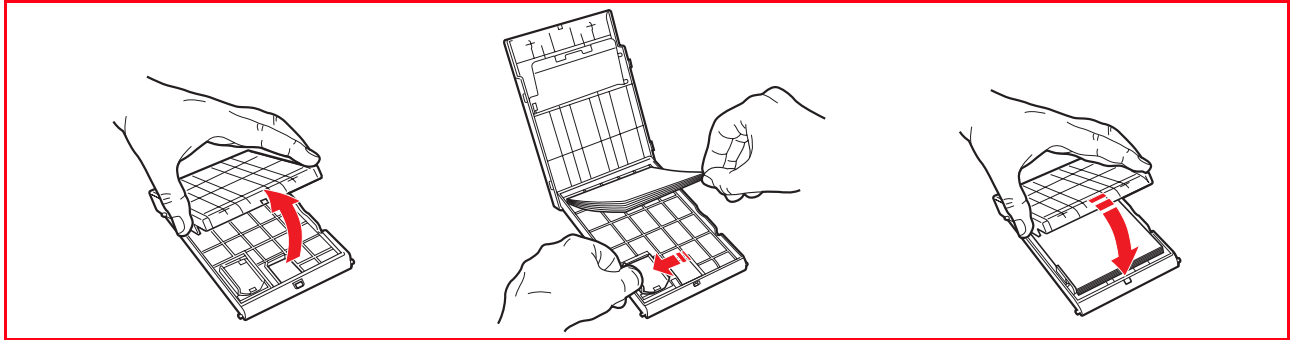
Reference	Part	Description
8	Page layout button	<p>Press to select the layout with which the photos are to be printed on paper. Press this button sequentially to select:</p> <ul style="list-style-type: none"> • 1 borderless photo adapted to the format of the sheet • 1 photo with borders adapted to the format of the sheet • 2 borderless photos adapted to the format of the sheet • 4 borderless photos adapted to the format of the sheet <p>the index of your images will be printed correctly if already compiled by the peripheral (digital camera). If the image index is not provided by the peripheral, the printer will create its own index which may not be complete.</p> <p>Only the icon selected remains ON.</p>
9	Number of copies button	<ul style="list-style-type: none"> • Press the button with the (+) sign to increase the number of copies to be made (max. 9). • Press the button with the (-) sign to reduce the number of copies to be made (min. 1). <p>The number selected is displayed in the bottom right-hand corner of the image selected.</p>
10	Navigation button	Makes it possible to move between the images displayed, shifting a white highlight frame. Hold the button down for automatic scrolling from one image to another.
11	Display button	Press this button to switch from full screen display to index (3x3 images).
12	Colour display	<p>2.4" LCD display for preview and selection of the images.</p> <p><i>Active Display</i></p> <p>The bar of the icons which highlights the total number of images selected for printing to the right and the icon that represents the device connected to the left is present in the lower part of the display.</p>
13	Bluetooth activity indicator	<p>Switches on at printer power-on if the Bluetooth function is enabled.</p> <p>Flashes during file transfer from a Bluetooth peripheral to the printer.</p>

LOADING PAPER

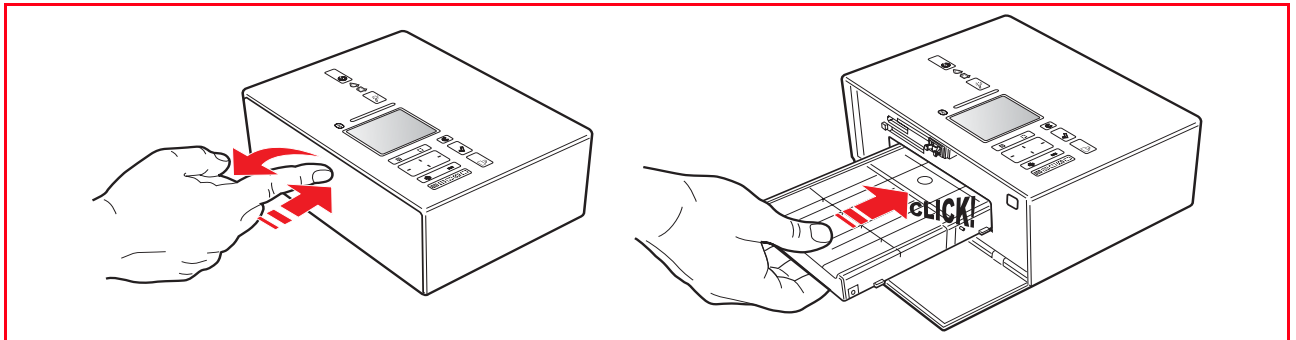
The printer is equipped with a paper detection sensor that automatically detects whether the paper is fed manually or from the paper cassette.

Loading Paper in the Paper Cassette

- 1 Open the paper cassette lid. Load up to 20 sheets of photo paper in the paper cassette bay with the print or glossy side facing upward, adjusting the paper width guide accordingly. Close the paper cassette lid.



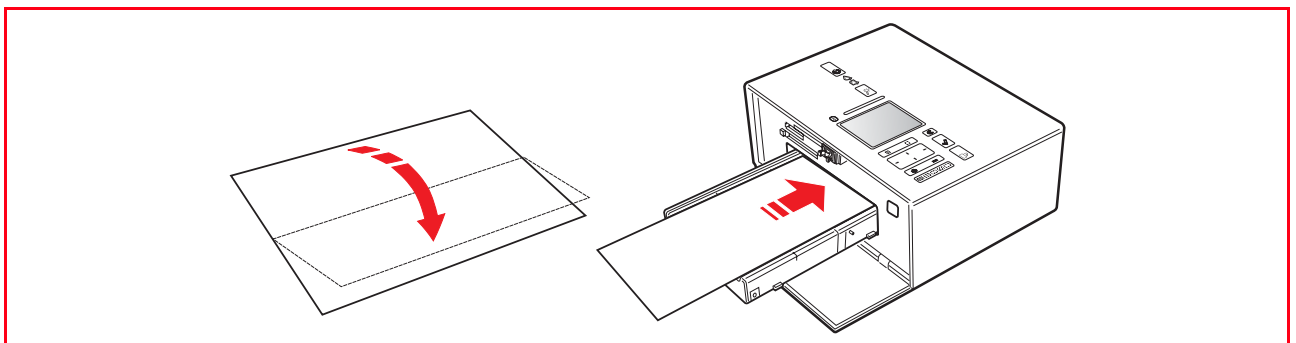
- 2 Open the printer's left outer door by pressing the upper centre part of the door to release it. Insert the paper cassette into the insertion slot and press it firmly until it clicks into place.



Loading a Single Sheet of Plain A4 Paper Folded Vertically in the Middle

You can manually load a single sheet of A4 plain paper folded vertically, corresponding to a double A6 size format (105 x 297 mm).

- 1 Make sure that your printer is turned on and that the paper cassette is inserted. See "Turning On Your Printer".
- 2 Fold a sheet of plain A4 size paper vertically in the middle. Place the paper between the two paper guides on the top of the paper cassette and feed the leading edge of the sheet into the insertion slot until it is picked up by the printer's feed mechanism.



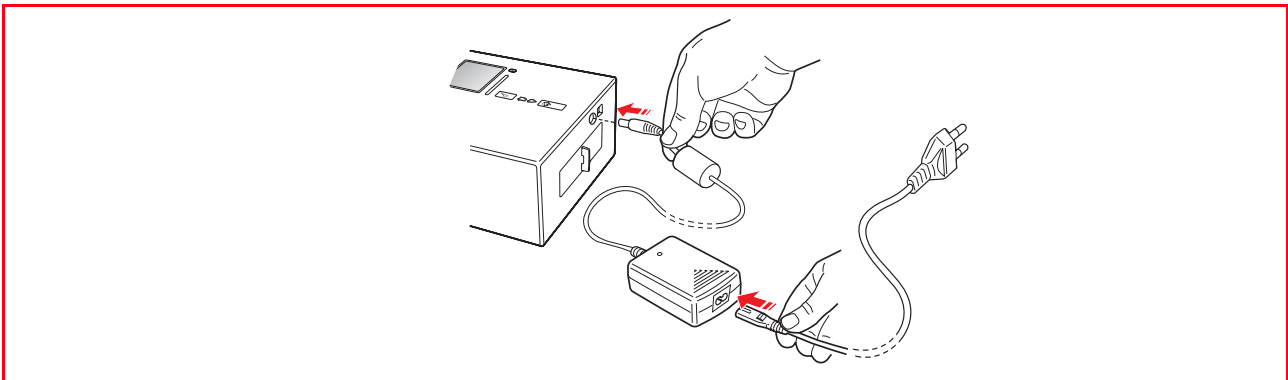
Choosing the Power Source For Your Printer

You can power your printer from the mains electrical power supply by using the external AC power supply unit provided, from your automobile battery by using the car lighter DC adapter provided, or with six rechargeable AA size 1.2 V Nickel Metal Hydride (NiMH) batteries, with a capacity of at least 2.2 to 2.5 Ah each, that you can purchase from electronic stores or from large retailers. The batteries must be fully charged when inserted in the printer.

note: The printer will not charge your rechargeable batteries. You can order an Olivetti battery charger kit by phoning a hot-line number listed in the leaflet that came with the printer, provided in the printer software or in the Olivetti web site.

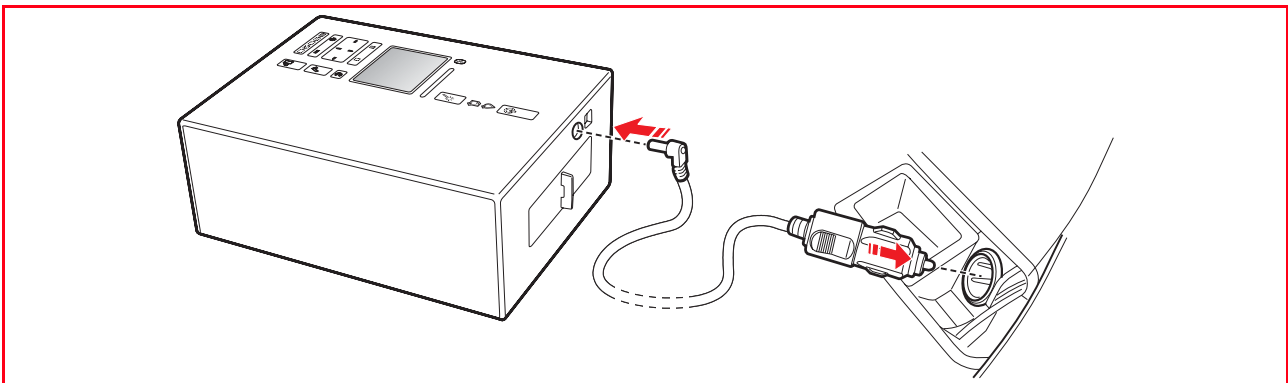
Mains Electrical Power Supply

- 1 Insert the external AC power supply unit cable jack into the printer's power socket, then insert one end of the power cord into the power supply unit and the other end to an electrical wall outlet.



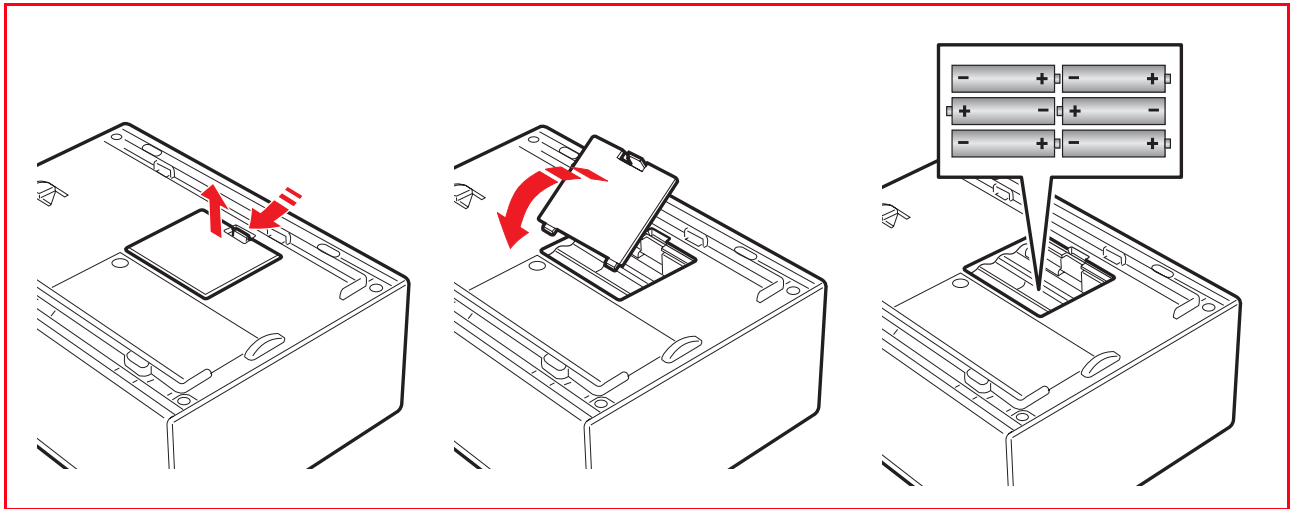
12V Car Battery DC Power Supply

- 1 Plug one end of the car lighter DC adapter into the printer power socket and the other end into your automobile's cigarette lighter.



Rechargeable NiMH Batteries

- 1 Turn over your printer and then open and remove the battery compartment cover.
- 2 Insert six rechargeable AA size 1.2 V Nickel Metal Hydride (NiMH) batteries, with a capacity of at least 2.2 to 2.5 Ah each, in the battery compartment then replace and close the compartment cover. The batteries must be fully charged when inserted in the printer.



TURNING YOUR PRINTER ON AND OFF

Turning On Your Printer

Press the ON/OFF button on the printer control panel.

The printer will execute a series of autodiagnostic tests aimed at detecting any possible system malfunction. Any error detected at this time will be signalled by the control panel, or by the personal computer if connected to the printer.

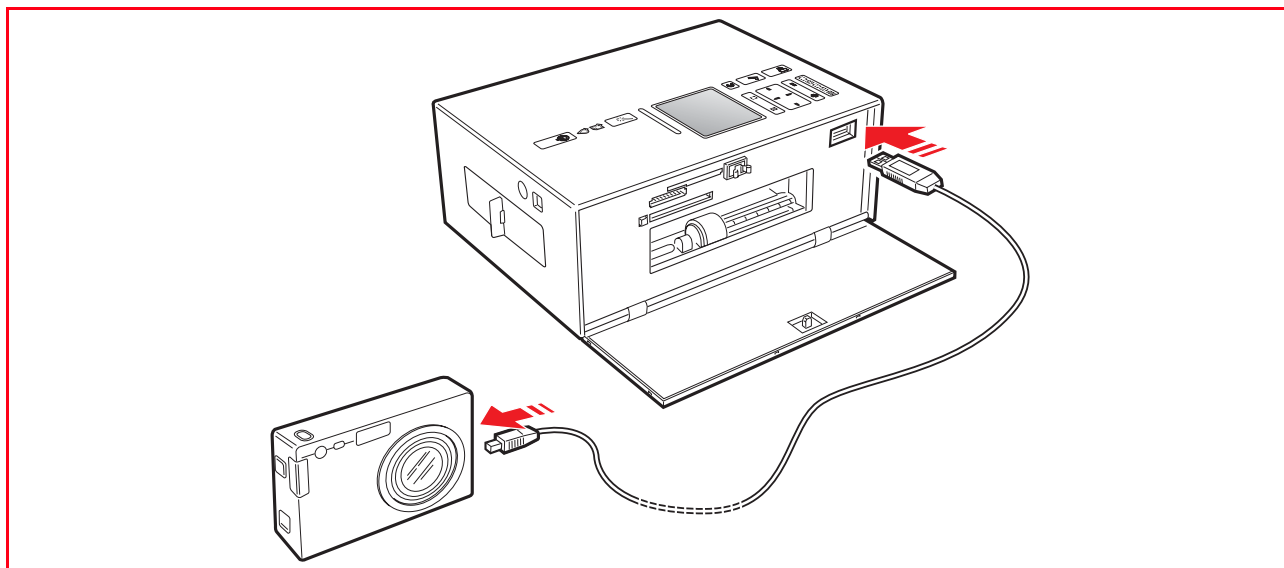
When you connect a non-PictBridge digital camera to the printer or insert a memory card in the appropriate memory card slot, all of the icons on the control panel will illuminate. When you connect a PictBridge-compliant digital camera only the Print button will turn off to indicate that printing is controlled directly from the attached digital camera.

Turning Off Your Printer

To turn off your printer when you finished working with it, press the ON/OFF button on the control panel. All the lights on the control panel, and the LCD, will turn off.

CONNECTING A DIGITAL CAMERA TO YOUR PRINTER

- 1 Turn on your digital camera. Read your camera's User's Guide for more information.
- 2 With your printer powered on, plug one end of the digital camera's USB cable to the USB connector on the camera.
- 3 Open the printer's left outer door by pressing the upper centre part of the door to release it. Plug the other end of the USB cable into the printer's USB connector.
When you connect a PictBridge-compliant digital camera to your printer, the print icon on the control panel will turn off to indicate that printing will be controlled directly from the digital camera. Read your camera's User's Guide for instructions on how to print your photos.



INSERTING AND REMOVING MEMORY CARDS

Your printer can read the following memory storage devices: Compact Flash I, II, Microdrive, SmartMedia, SecurDigital and MultiMedia cards, Memory Sticks (Duo, Pro, Magic Gate) and xD-Picture cards.

note: Adaptors for reading Mini SD and MS Pro memory cards can be purchased separately. Your printer can recognize and print the following file formats stored on the memory cards: DCF, JPEG, Exif and DPOF.

Inserting a Memory Card

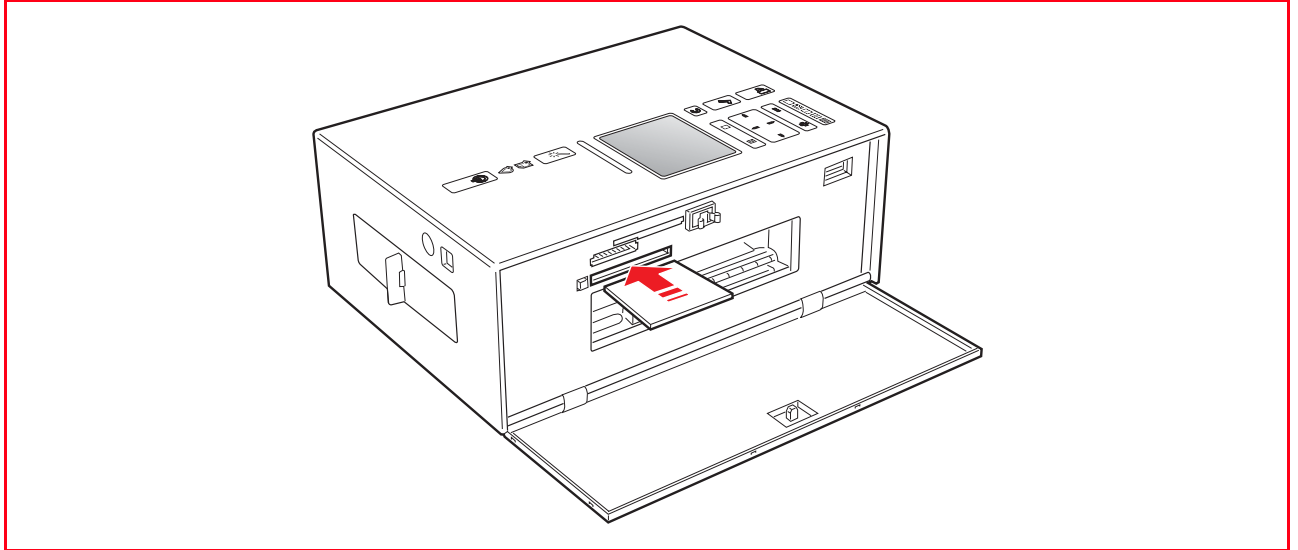
- When inserting a CompactFlash card, make sure that the label is facing upward (if the label has an arrow it needs to be pointing towards the printer) with the metal pinholes entering the printer first.
- When inserting a Multimedia and SecureDigital cards, make sure that the angled corner is on the right and the metal contacts are facing downward.
- When inserting a SmartMedia card or a Memory Stick, make sure that the angled corner is on the right and the metal contacts are facing upward.
- When inserting a xD-Picture Card, make sure the curved side of the card is facing you and the metal contacts are facing downward.

Proceed as follows:

- 1 Open the printer's left outer door by pressing the upper centre part of the door to release it, so you can access the memory card slots.
- 2 Orient your specific memory card as indicated at the beginning of this section, carefully insert it into the selected slot and then gently push it in until it stops.

The following figure shows an example of the insertion of a Compact Flash card.

note: The memory card does not go in all the way; do not try to force it in since doing so will damage the card and the printer.



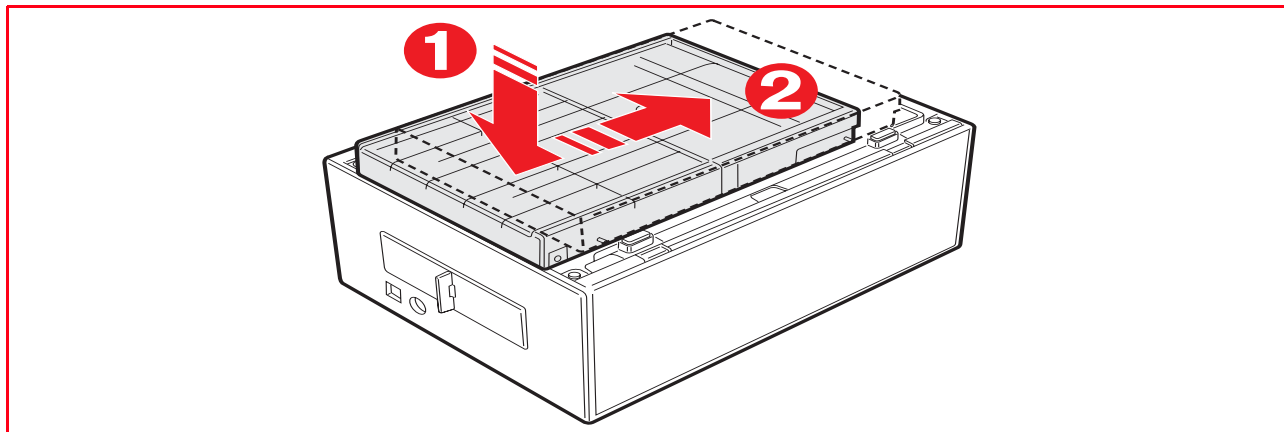
If the card is inserted correctly, an icon is displayed on the LCD indicating the total number of photos stored on the memory card (only the compatible files are opened and counted).

Removing a Memory Card

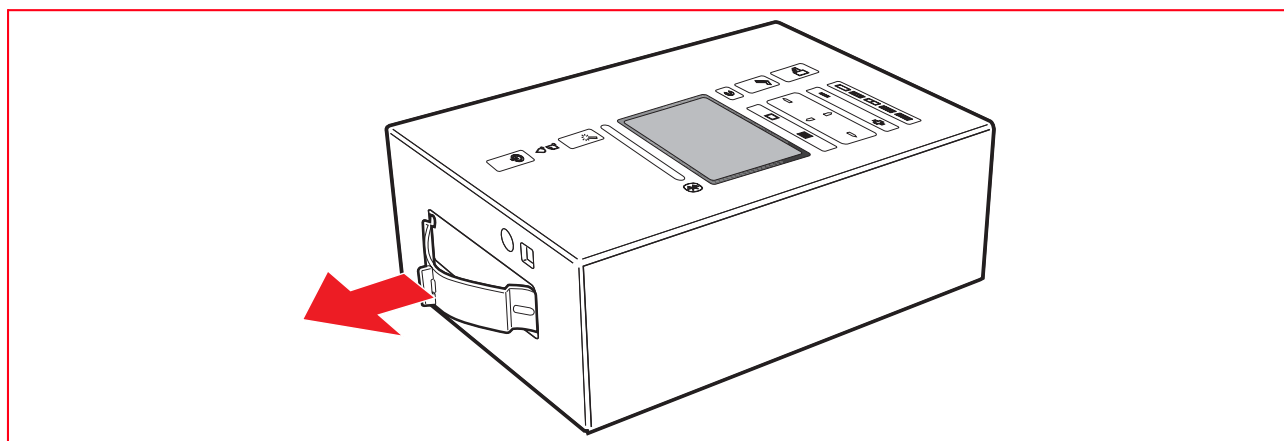
- 1 Carefully pull the card completely out of its slot. To remove a Compact flash card, push the extraction button located on the side of the insertion slot.
CAUTION: DO NOT remove the memory card while it is still being accessed either by the printer or personal computer. Doing so could damage the photos stored on the card.

CARRYING YOUR PRINTER

- 1 Extract the paper cassette from its insertion slot on the right side of the printer and close the printer's left outer door.
- 2 Slide the paper cassette along the cassette rails on the bottom of the printer until it is locked in place by the securing feature.

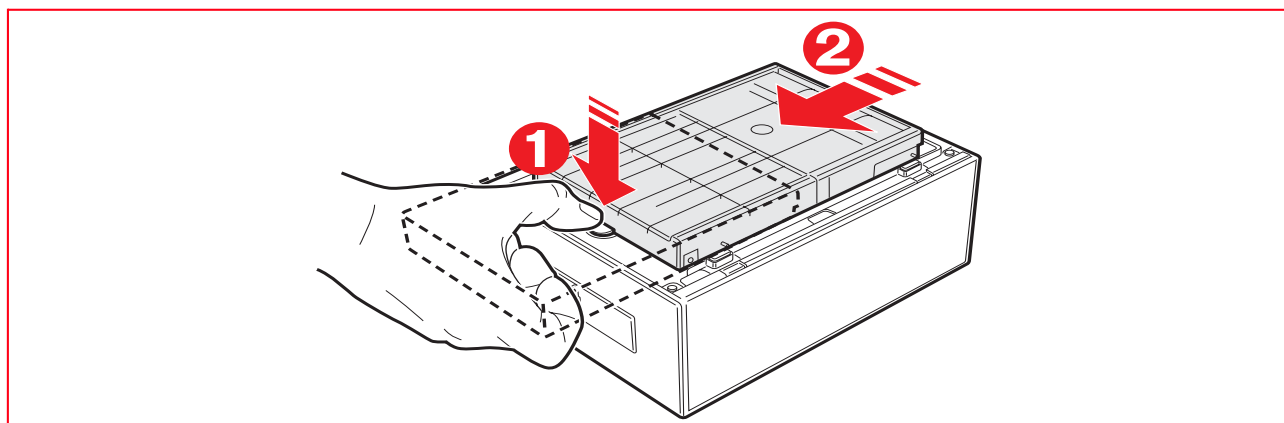


- 3 Extract the handle on the top of the printer and carry the printer wherever you go.



REMOVING THE PAPER CASSETTE FROM THE BOTTOM OF THE PRINTER

- 1 Turn over your printer.
- 2 Press the paper cassette securing feature and slide the cassette off the bottom of the printer.



Printing on the Bluetooth wireless connection is possible if this capability is integrated in the computer or if an external Bluetooth device has been installed (e.g. a Bluetooth USB pen). The Bluetooth function must be active on the printer.

The range of the Bluetooth system is usually around 10 meters but may vary according to the characteristics of the environment in which it is installed.

The printer supports the Bluetooth 1.2 Class 2 communication system for connection to compatible computers and cellphones.

The method of installation varies according to the type of use of the printer.

Activating of Bluetooth

The printer is configured for use of Bluetooth from compatible cellphones and does not require any type of installation.

To verify whether the Bluetooth capability is available, check that the blue LED of the Bluetooth icon is ON. If the blue LED of the Bluetooth icon is OFF, proceed as follows:

- *In the Windows environment:*
 - 1 Carry out USB installation as described in the documentation entitled "**Setting up your printer**".
note: If installation has already been performed, it is not necessary to repeat it.
 - 2 Open the Toolbox program (**Start > Olivetti > Programs > Toolbox**).
note: The USB cable must be connected and the printer must be powered on.
 - 3 Click the "**Settings**" button and then "**Bluetooth Settings**" to access configuration of Bluetooth parameters.
 - 4 Enable Bluetooth mode and click "**Send settings**": wait for automatic reception of the data of the Bluetooth network present: the blue light on the printer lights up.
Close the "**Toolbox**" program.
 - 5 The printer is not able to operate in the Bluetooth environment.
If a password is requested in the connection phase, type "**0000**" (or other if set by the user).

- *In the Mac OS X environment:*
 - 1 Carry out USB installation as described in the documentation entitled "**Setting up your printer**".
note: If installation has already been performed, it is not necessary to repeat it.
 - 2 Run the Toolbox program from the desktop.
note: The USB cable must be connected and the printer must be powered on.
 - 3 Click the "**Settings**" button and then "**Bluetooth Settings**" to access configuration of Bluetooth parameters.
 - 4 Click "**Bluetooth Status**". Activate the Bluetooth mode and wait for automatic reception of the data of the Bluetooth network present: select "**Apply**".
Close the "**Toolbox**" program.
 - 5 The printer is now able to operate in the Bluetooth environment.
If a password is requested in the connection phase, type "**0000**" (or other if set by the user).

2 USING YOUR PRINTER WITHOUT A COMPUTER

VIEWING PHOTOS ON YOUR PRINTER'S DISPLAY

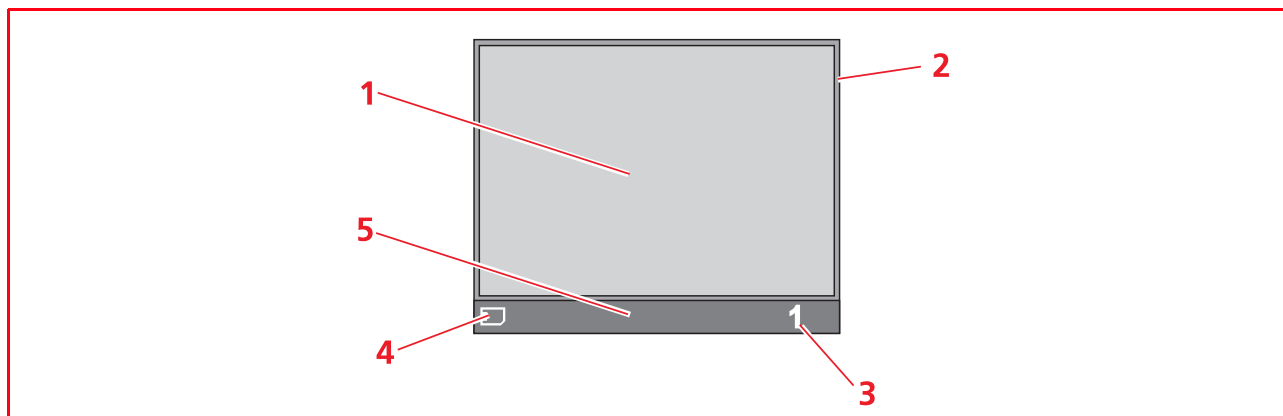
SELECTING AND PRINTING PHOTOS FROM YOUR MEMORY CARD

PRINTING PHOTOS FROM YOUR PICTBRIDGE-COMPLIANT DIGITAL CAMERA

SELECTING AND PRINTING PHOTOS FROM YOUR DPOF DIGITAL CAMERA

SELECTING AND PRINTING PHOTOS FROM YOUR NON-PICTBRIDGE/DPOF DIGITAL CAMERA

PRINTING PHOTOS FROM A BLUETOOTH PERIPHERAL

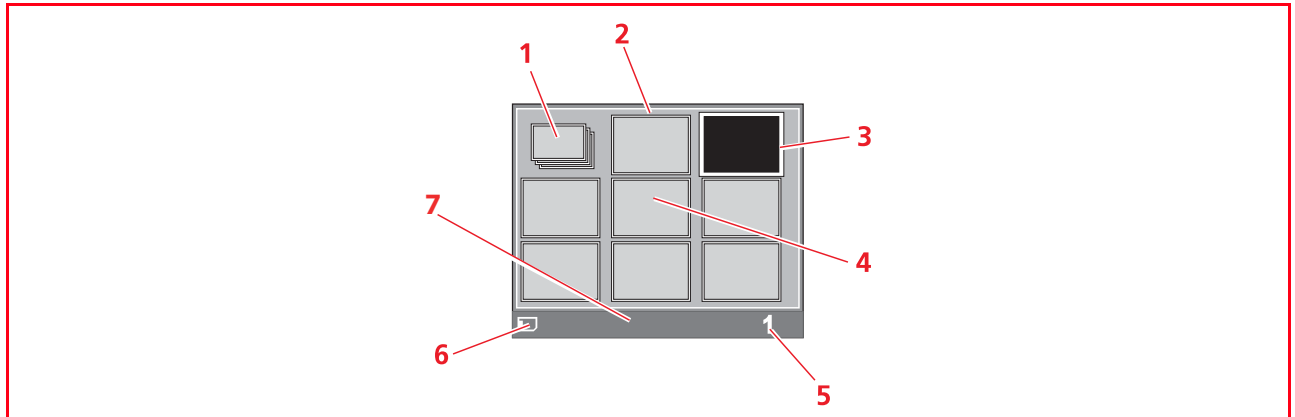
Full-Screen Views

Reference	Part	Description
1	Browse window	Displays the current photo.
2	Select frame	Indicates the selection state, highlighted when the Select button is pressed to select the photo displayed.
3	Image Total field	Indicates the number of selected photos that you want to print.
4	Device icon	Represents the device connected.
5	Icon bar	The bar where the different icons reside.

Navigating Through Full-Screen Views and Selecting Photos

- 1 To scroll through all the photos that are stored on the connected storage device and displayed in this screen view, press the Right and Left Navigation button.
- 2 To select the photo displayed and that you want to print, press the Select button.
- 3 To deselect the photo displayed, press the Select button again.

Thumbnail Views



Reference	Part	Description
1	Photo indicator	Indicates how many compatible photos are stored on the connected device.
2	Select frame	Indicates that the photo was selected by using the Select button. The number that appears on the bottom corner of the frame indicates the number of copies requested.
3	Browse frame	Highlights the current image as a result of the of the pressing of the Navigation button.
4	Thumbnail grid	A total of 9 grids where the photos are displayed in miniature format.
5	Image total field	Indicates the number of photos that you want to print.
6	Device icon	Indicates the device connected.
7	Icon bar	The bar where the different icons reside.

Improving the Photo's Print Quality

Photo print quality can be improved using the Magic button.

- 1 Press the Magic button: the printer analyzes the images and makes the necessary corrections.
note: The results of these operations are not shown on the LCD so as not to alter the original photo: the result is visible only during printing.
- 2 Press the **Print** button to print the photos modified; hold down the Magic button selected.

SELECTING AND PRINTING PHOTOS FROM YOUR MEMORY CARD

- 1 Open the printer's left outer door by pressing the upper centre part of the door to release it, then insert the memory card that you wish to print from into the related slot. The file transfer screen is displayed on the LCD indicating that your printer is reading the compatible files stored on the connected memory card.
- 2 A screen indicating the total number of compatible photos stored on the memory card is displayed on the control panel LCD. If needed, press the Change View button to toggle between full-screen and thumbnail screen views. See "Viewing Photos on Your Printer's Display". An icon on the screen's icon bar will indicate the device connected.
- 3 Using the Right, Left, Up, Down Navigation button, scroll through the photos to position the highlighted frame on the photo you wish to print.
- 4 Select the number of copies you want to print of the photos selected by pressing the plus (+) or minus (-) button. A copy indicator is displayed on the bottom-right corner of the photo selected to indicate the number of copies requested for that photo. The total number of photos selected is displayed on the icon bar on the bottom of the screen.

- 5 Select the layout in which you wish to print the selected photos by pressing the Page Layout button the number of times needed to select the required layout. You have the following possibilities:
 - Print an index sheet of all the photos if "All photos" was selected (by clicking on the icon showing the total number of photos stored on the memory card).
 - Print 4 borderless photos fitted on the page size.
 - Print 2 borderless photos fitted on the page size.
 - Print 1 photo with borders and fitted on the page size.
 - Print 1 borderless photo fitted on the page size.
- 6 Open the printer's right outer door by pressing the upper centre part of the door to release it.
- 7 Press the Print button to print the selected photos. The illuminated button icons will go off, the photo processing screen is displayed on the LCD.
- 8 Upon completion of the print job, the initial screen indicating the number of photos stored will be redisplayed.

PRINTING PHOTOS FROM YOUR PICTBRIDGE-COMPLIANT DIGITAL CAMERA

- 1 Load the paper on which you want to print. For optimum results when printing photographs, use photo paper. For information see "Loading Paper".

note: If the size of the paper loaded in the printer is different than the paper size selected from the digital camera for printing and you begin to print, the printed output will be wrong. Only a paper size smaller than the size selected from the digital camera will interrupt the print job and cause the Print button on the control panel to illuminate. Load the correct paper and press the Print button to resume printing.
- 2 Open the printer's right outer door by pressing the upper centre part of the door to release it.
- 3 Make sure your PictBridge-compliant digital camera is turned on and connected to the printer. For more information, see "Connecting a Digital Camera to Your Printer".
- 4 Printing is managed directly by your camera, so read your camera's User's Guide for instructions on how to print your photos.

During printing, the Print button will flash to indicate that a print job is under way.

SELECTING AND PRINTING PHOTOS FROM YOUR DPOF DIGITAL CAMERA

Your printer is capable of recognizing the DPOF information associated to picture files. In the case of a DPOF digital camera, the printer will print the photos that you select directly from your camera.

note: Before proceeding, make sure that your digital camera is DPOF-compliant by reading the camera's User's Guide.

- 1 Load the paper on which you want to print. For best results when printing photographs, use photo paper. For information see "Loading Paper".

note: If the size of the paper loaded in the printer is different than the paper size selected from the digital camera for printing and you begin to print, the printed output will be wrong. Only a paper size smaller than the size selected from the digital camera will interrupt the print job and cause the Print button on the control panel to illuminate. Load the correct paper and press the Print button to resume printing.
- 2 Open the printer's right outer door by pressing the upper centre part of the door to release it.
- 3 Make sure your DPOF digital camera is turned on and connected to the printer. For more information, see "Connecting a Digital Camera to Your Printer".
- 4 If you associated DPOF information to the photo files stored in your camera's memory, the printer will automatically print the photos that you have selected. Read your camera's User's Guide for instructions on how to select the photos you want to print.
- 5 If you did not associate DPOF information to the photo files, a screen indicating the total number of photos stored in the digital camera's memory is displayed on the control panel LCD. If needed, press the Change View button to toggle between full-screen and thumbnail screen views. See "Viewing Photos on the Control Panel LCD" for information regarding the views and indications displayed on the LCD. An icon displayed on the screen's icon bar will indicate the device connected.
- 6 Using the Right, Left, Up, Down Navigation button, scroll through the photos to position the highlighted frame on the photo you wish to print.

- 7 Select the number of copies you want to print of the photos selected by pressing the plus (+) or minus (-) button. A copy indicator is displayed on the bottom-right corner of the photo selected to indicate the number of copies requested for that photo. The total number of photos selected is displayed on the icon bar on the bottom of the screen.
- 8 Select the layout in which you wish to print the selected photos by pressing the Page Layout button the number of times needed to select the required layout. You have the following possibilities:
 - Print an index sheet of all the photos if "All photos" was selected (by clicking on the icon showing the total number of photos stored on the memory card).
 - Print 4 borderless photos fitted on the page size.
 - Print 2 borderless photos fitted on the page size.
 - Print 1 photo with borders and fitted on the page size.
 - Print 1 borderless photo fitted on the page size.
- 9 Press the Print button on your printer's control panel to print your photos. For more information see "Printer Control Panel".

SELECTING AND PRINTING PHOTOS FROM YOUR NON-PICTBRIDGE/DPOF DIGITAL CAMERA

- 1 Load the paper on which you want to print. For optimum results when printing photographs, use photo paper. For information see "Loading Paper".
- 2 Open the printer's right outer door by pressing the upper centre part of the door to release it.
- 3 Make sure your digital camera is turned on and connected to the printer. For more information, see "Connecting a Digital Camera to Your Printer".
- 4 A screen indicating the total number of photos stored in the digital camera's memory is displayed on the control panel LCD. If needed, press the Change View button to toggle between full-screen and thumb-nail screen views. See "Viewing Photos on the Control Panel LCD" for information regarding the views and indications displayed on the LCD. An icon displayed on the screen's icon bar will indicate the device connected.
- 5 Using the Right, Left, Up, Down Navigation button, scroll through the photos to position the highlighted frame on the photo you wish to print.
- 6 Select the number of copies you want to print of the photos selected by pressing the plus (+) or minus (-) button. A copy indicator is displayed on the bottom-right corner of the photo selected to indicate the number of copies requested for that photo. The total number of photos selected is displayed on the icon bar on the bottom of the screen.
- 7 Select the layout in which you wish to print the selected photos by pressing the Page Layout button the number of times needed to select the required layout. You have the following possibilities:
 - Print an index sheet of all the photos if "All photos" was selected (by clicking on the icon showing the total number of photos stored on the memory card).
 - Print 4 borderless photos fitted on the page size.
 - Print 2 borderless photos fitted on the page size.
 - Print 1 photo with borders and fitted on the page size.
 - Print 1 borderless photo fitted on the page size.
- 8 Press the Print button on your printer's control panel. The photos stored in the memory of your camera will be printed.

PRINTING PHOTOS FROM A BLUETOOTH PERIPHERAL

Your printer is equipped with an integrated Class 2 Bluetooth component. Its default address is 0000 so it can directly print any .JPEG transmitted from a Bluetooth mobile phone located within a maximum distance of 10 meters from the printer.

note: You can change your printer's default Bluetooth address from your personal computer, if connected to the printer.

- 1 Make sure that paper is loaded in the printer. For information see "Loading Paper".
- 2 Open the printer's right outer door by pressing the upper centre part of the door to release it.
- 3 Turn on your printer. See "Turning On Your Printer". Bluetooth capabilities are automatically activated on your printer.
- 4 Turn on the Bluetooth peripheral that you want to print from and, from within a distance of 10 meters from the printer, launch a Bluetooth discovery procedure directly from your peripheral. By activating this procedure, your Bluetooth peripheral will search for another Bluetooth device in the vicinity (in this case, your printer) with which it can share data. For information on how to launch a Bluetooth discovery procedure, read your peripheral's User's Guide.
- 5 When your Bluetooth peripheral has discovered your printer, launch the print job directly from your Bluetooth device. For instructions, read your peripheral's User's Guide.
The Bluetooth activity indicator on the control panel will flash as the photos are being transferred from the Bluetooth device to your printer for printing. The photos will be printed without borders.

3 USING YOUR PRINTER FROM A COMPUTER

BEFORE YOU BEGIN

THE TOOLBOX

THE PRINTER STATUS MONITOR

PRINTING

TRANSFERRING FILES FROM A MEMORY CARD TO YOUR COMPUTER

SETTING THE PARAMETERS TO IMPROVE PHOTO PRINT QUALITY

BEFORE YOU BEGIN

This chapter outlines the basic operating information that will put you in the condition to start using your printer when connected to a computer.

Before you begin:

- 1 Make sure that your printer and personal computer are connected properly and that the software on the "Installation" CD-ROM was successfully installed on the computer as indicated in the Installation Guide provided with your printer.
- 2 Load the paper on which you want to print. For more information see "Loading Paper".
- 3 Make sure that the out of ink indicator on the control panel is not flashing, or not illuminated. If it is, it is suggested that you replace the ink cartridge. For more information see "Replacing the Ink Cartridge".
- 4 Bear in mind that the buttons on your control panel are not active when the printer is used from the Toolbox installed on your personal computer. Only the Cancel button can be used to interrupt a print job underway.

THE TOOLBOX

The Toolbox application allows you to control printing operations directly from a single user interface on your computer monitor.

Included in the "Installation" CD-ROM, the Toolbox is installed automatically on your computer when you install the software contained on this CD-ROM.

To access the Toolbox:

- 1 Right click your mouse button on the Olivetti icon on the Windows task bar and click on **MY_WAY Toolbox**, or click **Start > Programs** or **All Programs > Olivetti > MY_WAY Toolbox**. The Toolbox is displayed.

note: In the Mac OS X environment, the **Toolbox** program can be launched by clicking the icon present on the desktop or by selecting it from the list of installed programs.

The main area of the Toolbox includes the icons representing the different tools available.

Toolbox icon:	You can:
Print photos	<ul style="list-style-type: none">• Browse the folders of your computer's hard disk, the memory of the non-Pictbridge/DPOF digital camera connected to your computer or the memory card inserted in your printer to search for the folder containing photos to print.• Select all the photos stored in the folder or just the individual ones wanted, and choose how many copies to print.• Select the type of paper to print on, and its size.• Select whether to print the photos on a single page, two on one page or four on one page.• Print an index sheet of photos.• Print the photos you have selected.
Memory card file transfer	<ul style="list-style-type: none">• Transfer the contents of the memory card inserted in the printer to a folder on your computer. See "Transferring Files from Memory Card to your Computer".

The Toolbox main interface screen also provides links to Help, Solutions and assistance, and Settings.

Toolbox link:	You can:
Help	<ul style="list-style-type: none">• Read more information on the currently displayed topic.
Solutions and assistance	<ul style="list-style-type: none">• Clean and test the ink cartridge.• Automatically align the ink cartridges. See "Aligning the Ink Cartridge From the Toolbox".• Find the address of the manufacturer's web site, where you can access the information needed to purchase new ink cartridges.• Access troubleshooting information.• Access contact information.
Settings	<ul style="list-style-type: none">• Change the Toolbox default settings.

THE PRINTER STATUS MONITOR

The Printer Status Monitor provides information on the current state of your printer. It is installed permanently on your computer when you install the software contained on the "Installation" CD-ROM. Displayed automatically at the beginning of a print job, the Status Monitor:

- displays a graphical representation of the percentage of the print job already completed.
- displays the page number being currently printed out of the total number of pages of the job.
- displays a graphical representation of the estimated amount of ink, in percentage, still available in the cartridge.
- allows you to cancel the print job.
- provides you with the address of the manufacturer's web site, where you can access the information needed to purchase new ink cartridges.

The Status Monitor closes automatically at the end of the print job, but you can close it to its icon on the Windows task bar at any time.

If you decide to close the Status Monitor during a print job, it will be automatically redisplayed in the following conditions:

- when the ink remaining in the cartridge is low, or when the cartridge is out of ink. A coloured exclamation mark will indicate when the cartridge is in a low ink condition and the importance of the condition. Pop-ups will be displayed with the address of the manufacturer's web site, where you can access the information needed to purchase a new ink cartridge.

The Printer Status Monitor also displays error pop-ups when:

- your printer runs out of paper.
- a paper jam has occurred.
- your printer is busy with another task.
- your printer is not recognised.
- the ink cartridge carriage is jammed.
- your printer does not work (printer error).

In all of the above error conditions, you can choose whether to continue or cancel the print job by clicking the related button on the screen.

Printing From Your Application Using Print Properties

- 1 With the document or photo open in the application that you are using, click **File > Print** to open the **Print** dialogue box.
- 2 Click **Preferences** or **Properties**, depending on your operating system.
- 3 On the **Paper/Quality** tab, customise your print settings:
 - a **Document type**: define the characteristics of the document that you want to print. Select **Auto detection** to have the printer automatically detect the characteristics of the document or **Manual selection** to manually define the characteristics yourself.
If you select **Manual selection**, choose the characteristics of the document to be printed: **Text** (black text or line art only), **Mixed** (combination of black text or line art and colour graphics or photos), or **Photo** (colour photos only).
 - b **Paper Setup**: from the drop-down menus available, select the type of paper that you want to use (Plain, Coated, Photo, Glossy, Cards) and its size.
 - If you select Coated or Cards as the type of paper you will be using, the **Borderless** checkbox is displayed so you can choose to print without borders.
 - If you select Photo or Glossy paper as your paper type, by default the **Borderless** checkbox will be selected enabling you to print borderless photos on the selected media.
 - If plain paper is selected the **Manual Feed** checkbox is already selected. In this case the printer will not begin to print until you load the paper, and will automatically recognise the size of the paper loaded. Plain A4 size paper folded in the middle can be fed only manually from the top of the paper cassette.

note: If you load paper that is smaller than the selection made, the printer will eject the paper prompting you to load paper corresponding to the selected size.
 - c **Quality**: define the quality of your printed output. Select between **Speed** (highest print speed, lowest resolution), **Normal** (average print speed and resolution), **High** (low print speed, high resolution) and **Photo Quality** (lowest print speed but with the highest print resolution).
 - You can also select to print in **Colour** or in **B/W** (Black and white). By default the **Colour** radio button is always checked, enabling full-colour printing. Select **B/W** when you need to print shades of grey, or to continue to print when the colour cartridge is out of ink.
 - d By default, the **Print Last Page First** checkbox is selected so upon completion of the print job the first page of your multiple-page document remains on top of the document. Click this checkbox to deselect it if you want to print starting from the first page of your document.
 - e In the **No. Copies** box, use the up or down arrows to define the number of copies you want to print.
 - f To return the different screen settings to their factory default values, click the **Default** button.
 - g On the bottom of the screen:
 - Click the **OK** button to confirm the settings made and exit.
 - Click the **Cancel** button to exit without saving the changes made.
 - Click the **?** button for information on the Paper/Quality tab.
- 4 Click the **Layout** tab to select the layout format of your printed output:
 - a The **Single page per print** radio button is selected by default. Your printer will print the individual pages of the document, or your photos, on a single page layout.
 - b Click the **Multiple pages per print** radio button to fit the selected number of pages on a single sheet of paper. By selecting this option:
 - The **Pages per print** drop-down menu is displayed where you can select to print either **2** or **4** pages of your document on a single sheet.
 - The **Order** drop-down menu is then displayed where you can select the order in which the multiple pages will be fitted on the single sheet of paper. You can select between **Left-to-right down**, **Right-to-left down**, **Right-to-down left** or **Left-to-down right**, depending on the number of pages selected.
 - By clicking the **Borders** checkbox, a frame is placed around the individual page images on the single sheet of paper.
 - c Click the **Poster** radio button to expand the contents of a single page onto more than one sheet of paper. The final output consists of your selected poster image distributed among the number of pages defined:

- The **Poster** drop-down menu is displayed where you can select **2x1**, **2x2**, **3x3** or **4x4** to define on how many sheets to fit the selected poster image.
 - By clicking the **Print Borders** checkbox, the printer will automatically place a frame around each individual image that your poster is composed of. An indication of the position of the image in the poster is also provided.
- d To restore the different settings to their factory default values, click the **Default** button.
- e On the bottom of the screen:
- Click the **OK** button to confirm the settings made and exit.
 - Click the **Cancel** button to exit without saving the changes made.
 - Click the **?** button for information on the Layout tab.
- 5 Click the **Ink Levels** tab to see the estimated amount of ink still available in the ink cartridge. This is important information to consider before launching a lengthy print job.
- a On the Ink Levels tab there is also the **Launch Toolbox** button, a direct link to the Toolbox Maintenance screen that provides a user interface for the maintenance and troubleshooting of your printer. See "The Toolbox" for more information.
- b On the bottom of the Ink Levels tab:
- Click on the **OK** or **Cancel** button to exit.
 - Click on the **?** button for information on the Ink Levels tab.
- 6 Click the **OK** button in the Print dialogue box to start printing.

Printing with the Toolbox Print Photos Tool

- 1 Right click your mouse button on the Olivetti icon on the Windows task bar and click **MY_WAY Toolbox**, or click **Start > Programs** or **All Programs > Olivetti > MY_WAY Toolbox**. The Toolbox is displayed.
- note:** In the Mac OS X environment, the **Toolbox** program can be launched by clicking the icon present on the desktop or by selecting it from the list of installed programs.
- 2 Click **Print photos**. The "My pictures" folder of your personal computer is opened by default if a digital camera is connected; if a memory card is inserted, the folder with the contents of the memory card is opened by default.
- note:** The printer directly prints the picture files stored on the memory card and therefore do not remove the memory card from its slot while connection is in progress.
- 3 The pictures stored in the folder are displayed in thumbnails on the left of the dialogue box; the first photo of the folder, or the photo select, is displayed in a larger view on the right of the screen. You can now select what to do:
- a Click the **Add All** button to add all the photos in the folder to your selection of photos to print.
- b Select the individual photos to print by clicking directly on the photo wanted. Define the number of copies that you want to print of the photo selected by clicking on the plus (+) and minus (-) boxes that appear on the selected photo. You can also select the number of copies by clicking on the copy selection arrows on the bottom of the screen. The box on the left upper part of the selected photo indicates the number of copies chosen. Use the box's side scroll bar or arrow buttons to move up and down through the selection of photos available.
- note:** To remove all the photos from your print selection, click the **Clear Selection** button. To remove single photo selections, click on the minus (-) box on the individual photos, or click the copy selection arrows on the bottom of the screen, to decrease the number of copies to zero.
- 4 Click the **Print** button. The Print Photos dialogue box is displayed.
- note:** You can improve the quality of the photos by applying the correction filters that are available in this selection screen. To activate these filters, tick the selection box corresponding to the filter wanted; a preview of the correction is displayed.
- 5 Personalise your print settings:
- a **Paper setup:** from the drop-down menu select the paper that you loaded and define its size.
- b **Quality:** define the quality of your printed output. Select between **Speed** (highest print speed, lowest resolution), **Normal** (average print speed and resolution), **High** (low print speed, high resolution) and **Photo Quality** (lowest print speed but with the highest print resolution on photo paper).

- c **Select Layout:** choose the layout that you prefer by clicking on the graphical representation of one of the following options: Full Page, Two-in-One, Four-in-One and Index.
note: The Borderless layout is not available if Plain paper type is selected.
note: When the Two-in-One paper layout, if an 10 x 15 paper size is chosen, the printer will print two wallet-sized pictures. When a Four-in-One paper layout is selected, if an 10 x 15 paper size is chosen, the printer will print four passport sized pictures. When selecting an Index layout, all of the pictures will be bordered. When selecting an Index layout, all of the pictures will be bordered.
- 6 Click the **Print** button to start printing.

TRANSFERRING FILES FROM A MEMORY CARD TO YOUR COMPUTER

- 1 Insert into the corresponding slot on the printer, the memory card containing the files to transfer. See "Inserting and Removing Memory Cards".
- 2 Right click your mouse button on the Olivetti icon on the Windows task bar and click **MY_WAY Toolbox**, or click **Start > Programs or All Programs > Olivetti > MY_WAY Toolbox**.
note: in the Mac OS X environment, the **Toolbox** program may be run by clicking on the icon present on the desktop or by selecting it from the list of installed programs.
The **Toolbox** is displayed.
- 3 Click the **Memory Card File Transfer** icon.
- 4 Click the **Browse** button and search for the folder on your computer in which to transfer the files.
- 5 Click the **OK** button once you have found the folder wanted.
- 6 Click the **Transfer** button to start the file transfer from the memory card to your computer.
note: To cancel the file transfer and return to the Toolbox's main screen, click the Cancel button.
For information, click Help.

SETTING THE PARAMETERS TO IMPROVE PHOTO PRINT QUALITY

- 1 Open the **Toolbox** program to access the image quality improvement functions.
- 2 Select the **Print photo** to apply a correction filter.
- 3 With a click of the mouse, select the photo to be printed from the list on the screen in order to apply an image correction filter.
- 4 Apply the correction filter desired, clicking on its related selection box.
The available correction settings differ and depend on the results to be achieved.
It is possible, for example, to improve definition of details, to apply suitable contrast for the image and other effects.
- 5 Click the **Print** button to print the photo.
The number of copies to be printed can be defined before clicking the Print button.

4 THE INK CARTRIDGE

CHECKING THE INK LEVEL

REPLACING THE INK CARTRIDGE

ALIGNING THE INK CARTRIDGE

CHECKING THE INK LEVEL

To know when the ink cartridge is running out of ink and needs replacing, check the ink level in the following ways:

- 1 By viewing the ink level indicator on the Ink Levels tab of your print driver's Preferences or Properties dialogue box, as follows:
 - a With the document file open in the application that you are using, click **File > Print**. The Print dialogue box is displayed.
 - b Click **Preferences** or **Properties**, depending on your operating system. The printer driver user interface screen is displayed.
 - c Click the **Ink Level** tab. The ink capacity indicator shows the percentage of ink remaining in the cartridge.
- 2 From the Toolbox, by viewing the ink level indicator on the bottom of the Toolbox's main screen:
 - a Right click your mouse button on the Olivetti icon on the Windows task bar and click **MY_WAY Toolbox**, or click **Start > Programs** or **All Programs > Olivetti > MY_WAY Toolbox**. The Toolbox is displayed.

note: In the Mac OS X environment, the **Toolbox** program can be launched by clicking on the icon present on the desktop or by selecting it from the list of installed programs. The Toolbox is displayed.
 - b Click **Solutions and Assistance**.
 - c Click **Select** to choose New ink cartridge. The New ink cartridge dialogue box displayed includes the ink level indicator showing the amount of ink remaining in the cartridge.
- 3 From pop-ups displayed by the Printer Status Monitor during a print job, that show the amount of ink remaining. See "The Printer Status Monitor" for more information.
- 4 From the Start menu:

Click **Start > Programs** or **All programs > Olivetti > MY_WAY New ink cartridge**. The Status Monitor is displayed.
- 5 Directly on the printer control panel:

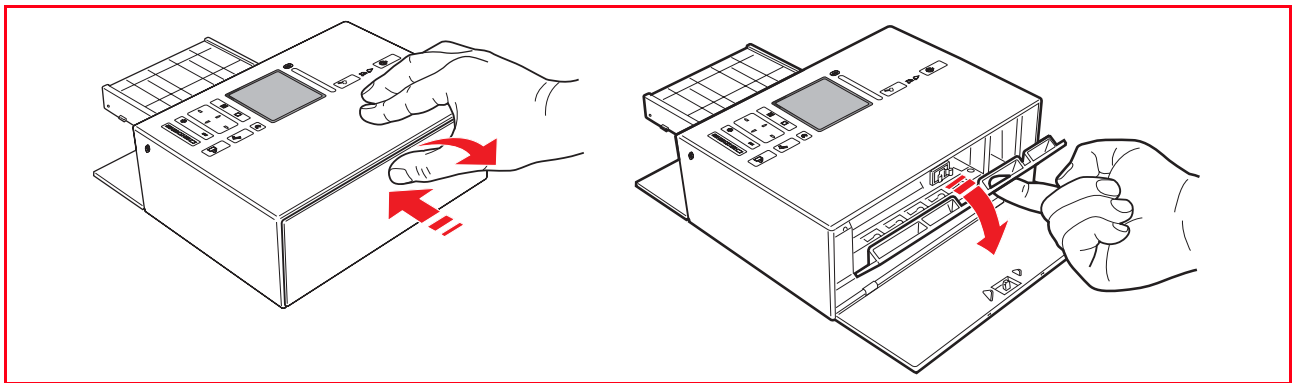
When the ink indicator begins to flash, the ink level in the cartridge is **getting low**; when the indicator is on steady, the ink cartridge is **almost out of ink**.

REPLACING THE INK CARTRIDGE

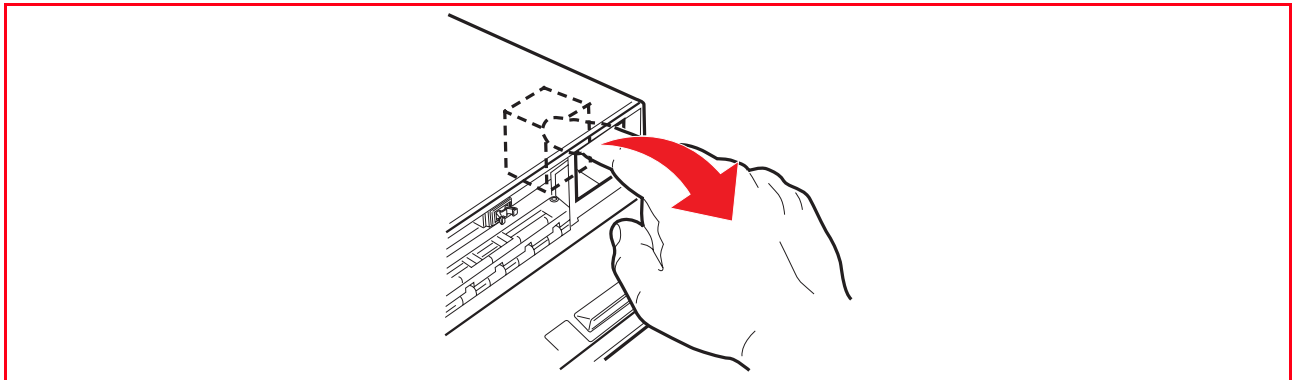
Before proceeding with the procedures indicated in this section, carefully read and follow the information provided in "Safety Instructions" at the beginning of this manual.

For information on how to purchase new ink cartridges from the manufacturer, consult the Toolbox's Solutions and Assistance feature. To access the Toolbox, see "The Toolbox". To guarantee the correct operation of your printer and top quality printing, it is essential to use only the manufacturer's original ink cartridges.

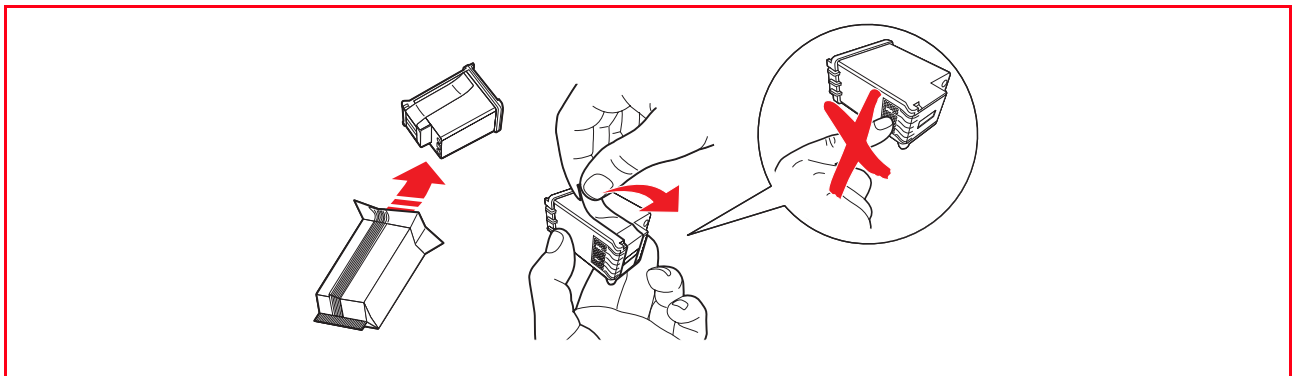
- 1 Turn on the printer.
- 2 Make sure that paper is loaded. See "Loading Paper".
- 3 Open the printer's right outer door by pressing the upper centre part of the door to release it, then pull open the printer's right inner door. The ink cartridge carrier moves to its loading position at the far right-hand side of the carriage.



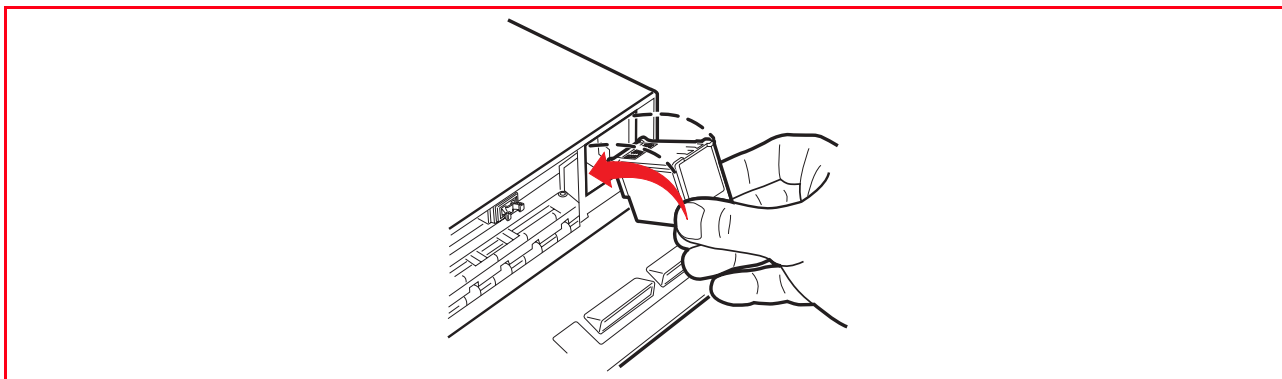
- 4 With your index finger, pull and rotate downward the top edge of the ink cartridge and remove it from the carrier.



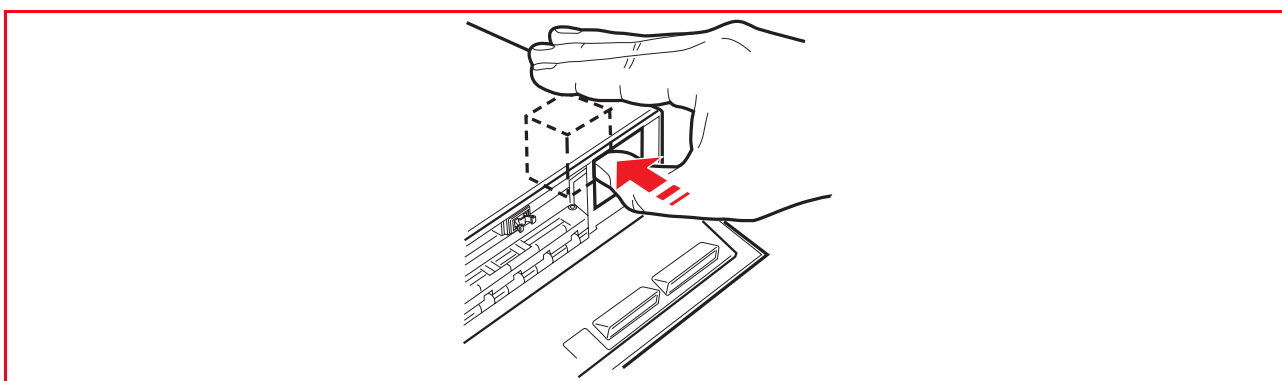
- 5 If you are installing a new ink cartridge, remove the cartridge from its box and then gently remove the protection tape that covers the ink nozzles. DO NOT TOUCH THE CONTACTS or the ink nozzles. Hold the ink cartridge by its sides.



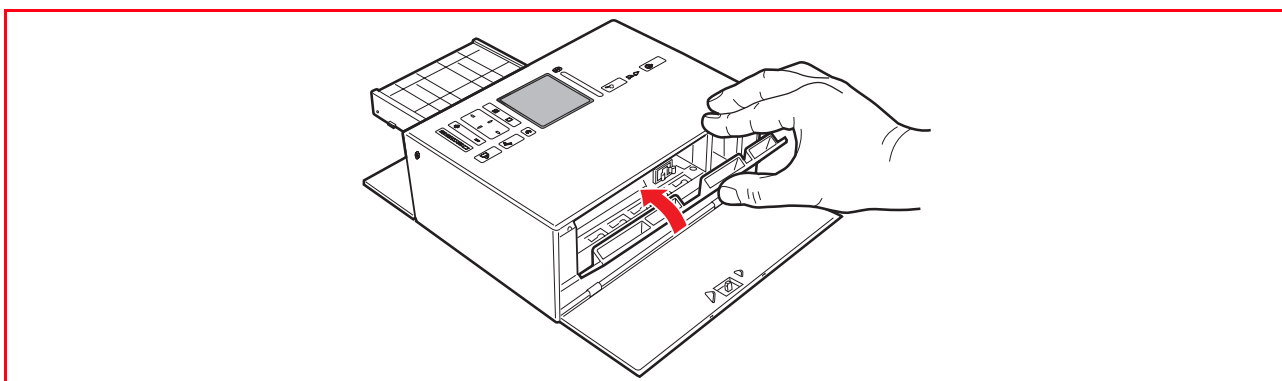
- 6 Hold the ink cartridge with its nozzles facing downward and its contacts facing the rear of the printer, then insert the cartridge into the carrier from the bottom nozzle side first and with a rotating motion.



- 7 Push the ink cartridge firmly until it clicks into place.



- 8 Close the printer's inner door.



- 9 If a new cartridge is installed, the printer will automatically perform a cartridge recognition procedure which lasts about 1 minute. An ink cartridge alignment page will then be printed to indicate that the newly installed ink cartridge was automatically aligned. For information see "Aligning the Ink Cartridge".

ALIGNING THE INK CARTRIDGE

The ink cartridge is automatically aligned by the printer whenever a new cartridge is installed. However, you need to manually align the ink cartridge when the edges of the printed photos are still not clear, or when the lines still appear wavy, even after cleaning the ink cartridge nozzles. See "Aligning the Ink Cartridge From the Toolbox".

Aligning the Ink Cartridge From the Toolbox

When the edges of the printed photos are still not clear, or when the lines still appear wavy, even after cleaning the ink cartridge nozzles:

- 1 Right click your mouse button on the Olivetti icon on the Windows task bar and click on **MY_WAY Toolbox**, or click **Start > Programs** or **All Programs > Olivetti > MY_WAY Toolbox**. The Toolbox is displayed.
note: In the Mac OS X environment, the **Toolbox** program can be launched by clicking the icon present on the desktop or by selecting it from the list of installed programs. The Toolbox is displayed.
- 2 Click **Solutions and Assistance** and then select the "Print the alignment page" option.
- 3 Click the **Select** button and then click **Print**.
- 4 When the alignment page is printed, the ink cartridge has been aligned. Click **Cancel** to return to the previous Toolbox screen.

5 MAINTENANCE AND TROUBLESHOOTING

CLEANING YOUR PRINTER

CLEANING THE INK CARTRIDGE NOZZLES

TROUBLESHOOTING

CLEARING PAPER JAMS

CLEANING YOUR PRINTER

CAUTION: Do not clean the inside of your printer and do not use stain removers, acetone-based products, liquid or aerosol cleaners. Doing so could damage your printer case.

Cleaning the Printer Casing

- 1 Clean the printer casing by using a soft dry cloth or moistened in warm water to wipe dust, dirt or smears off the outer case of your printer only.

CLEANING THE INK CARTRIDGE NOZZLES

Clean the ink cartridge nozzles when:

- White or colour lines appear in your printouts.
- Colours fade, or do not print in parts or completely.
- The vertical lines of your printout are jagged.

To clean the ink cartridge nozzles:

- 1 Make sure paper is loaded in the printer. See "Loading Paper".
- 2 Right click your mouse button on the Olivetti icon on the Windows task bar and click on **MY_WAY Toolbox**, or click **Start > Programs** or **All Programs > Olivetti > MY_WAY Toolbox**. The Toolbox is displayed.
note: In the Mac OS X environment, the **Toolbox** program can be launched by clicking the icon present on the desktop or by selecting it from the list of installed programs. The Toolbox is displayed.
- 3 Click **Solutions and Assistance**.
- 4 Select the "Clean and Test Nozzles" option.
- 5 Click the **Select** button and then click **Print**. The printer automatically cleans the nozzles and prints a test page.
- 6 Check the quality of the printed output with the example displayed on the computer monitor. If you are not satisfied with the quality of the printed output, click the **Clean again** button to repeat the nozzle cleaning procedure.
- 7 When finished, click the **Close** button to return to the Toolbox main user interface screen.

Problems During Printer Setup

Before reading this section:

- 1 Make sure **the printer's AC power supply unit is properly connected to the printer and to a working electrical outlet**, or the car cigarette lighter DC adapter is properly connected, or the six rechargeable AA size 1.2 V Nickel Metal Hydride (NiMH) batteries, with a capacity of at least 2.2 to 2.5 Ah each, are properly inserted and fully charged.
- 2 If you are using your printer with a personal computer, make sure that you have turned on both your printer and computer.
- 3 Make sure the computer's operating system is Windows 98 SE, ME, 2000 or XP, or MAC OS X 10.2 or higher.

Problem	Possible Cause	Corrective Action
Your printer does not turn on.	<ul style="list-style-type: none"> • When the printer is powered from the mains through its CA power supply unit: The power supply unit's power cord is not properly attached to the printer and/or not properly plugged into a working electrical outlet. • When the printer is powered from the car battery through the car lighter DC adapter: The car lighter DC adapter is not properly attached to the printer and/or to a working car cigarette lighter socket. • When the printer is powered by rechargeable batteries: Six rechargeable AA size 1.2 V Nickel Metal Hydride (NiMH) batteries, with a capacity of at least 2.2 to 2.5 Ah each, are not inserted, or the batteries are not fully charged. 	<ol style="list-style-type: none"> 1 Unplug the power supply unit's power cords from the printer and from the electrical outlet and then plug them back in. 2 If the ON/OFF button is not illuminated make sure that the electrical outlet is working by attaching another appliance that you know works into it and then turn on the appliance. <ol style="list-style-type: none"> 1 Unplug the cigarette lighter adapter from the printer and from the car socket and then plug it back in. 2 Make sure that the car cigarette lighter socket is working by attaching another device (such as a mobile phone) that you know works into it and then turn on the device. <ul style="list-style-type: none"> • Remove and reinsert the batteries correctly, or recharge the batteries.
You insert the "Installation" CD-ROM into your computer CD drive and the installation program does not start automatically.	<ul style="list-style-type: none"> • An operating system incompatible with the CD-ROM software may be running on the personal computer. 	<ul style="list-style-type: none"> • Make sure the personal computer is running Windows 98 SE, ME, 2000 or XP, or MAC OS X 10.2 or higher.

Problem	Possible Cause	Corrective Action
	<ul style="list-style-type: none"> • The auto-run feature is disabled. • Your personal computer cannot find setup.exe on the CD-ROM. • The CD-ROM will not start. 	<ul style="list-style-type: none"> • In Windows: <ol style="list-style-type: none"> 1 Remove and replace the "Installation" CD-ROM in the CD drive with the written label upwards. 2 Select Start > Run and then click Browse. 3 Find the CD-ROM drive identifier and click Open. 4 Select Setup and click Open. The file setup.exe is displayed in the dialogue box. 5 Click OK and then follow the instructions displayed. • In Macintosh: <ol style="list-style-type: none"> 1 Power on the computer and insert the "Installation" CD-ROM in the drive. 2 Double click the CD-ROM icon displayed to start installing the software and follow the instructions displayed.
<p>Your printer's name is not available when you select File > Print from an application. The printer is not shown in the Printer folder on the Control Panel.</p>	<ul style="list-style-type: none"> • The printer driver was not installed correctly 	<ol style="list-style-type: none"> 1 Close all applications currently open. 2 Reinstall the printer software as instructed by the Setup Diagram or as indicated in the step above.
<p>When connecting the printer to the computer with the USB cable, the Plug and Play wizard did not terminate.</p>	<ul style="list-style-type: none"> • The computer did not find the printer driver. 	<ol style="list-style-type: none"> 1 Remove the "Installation" CD-ROM from the drive and re-boot the computer. 2 Place the "Installation" CD-ROM in the drive with the written label facing upwards. 3 Reinstall the printer software as instructed in the Setup Diagram or as indicated in the step above.
<p>When connecting your printer to the computer with the USB cable, the New Hardware Wizard is not displayed on the computer's monitor.</p>	<ul style="list-style-type: none"> • The computer is running an incompatible operating system. 	<ul style="list-style-type: none"> • Make sure the computer is running Windows 98 SE, ME, 2000 or XP, or MAC OS X 10.2 or higher.
	<ul style="list-style-type: none"> • The USB cable may not be properly connected between the printer and computer. 	<ol style="list-style-type: none"> 1 Turn off your printer and computer, then unplug the USB cable from these two devices. 2 Reattach the USB cable to the two devices by following the instructions in the Setup Diagram. Turn on the printer first followed by the computer.

Problem	Possible Cause	Corrective Action
	<ul style="list-style-type: none"> • The computer may not be enabled for USB operation. 	<ul style="list-style-type: none"> • In Windows: <ol style="list-style-type: none"> 1 Click Start > Settings > Control Panel. 2 Double click the System icon. 3 Click the Device Manager or Hardware tab, then click the Device Manager button. 4 Click the Plus (+) sign next to the USB (Universal Serial Bus) Controller option. <ul style="list-style-type: none"> – If USB host controller and USB root hub are present, the USB is enabled. – If they are not present, read your computer manual for information on how to enable a USB connection. • In Macintosh: <ul style="list-style-type: none"> – From the control panel, check the characteristics of the system and that there is a USB connection up and running. – Reinstall the USB drivers for Macintosh by consulting the documentation provided by the system manufacturer.

Problems When Powering On the Printer

Problem	Possible Cause	Corrective Action
The printer does not turn on when you press the Power ON/OFF button on the control panel.	<ul style="list-style-type: none"> Refer to the section "Problems During Printer Setup" 	Refer to the section "Problems During Printer Setup"
Individual indicators on the control panel come on.	<ul style="list-style-type: none"> Specific printer error as signalled by the indicator. 	<ul style="list-style-type: none"> Check the corrective action for the corresponding indicator that is explained in "Meaning of the Indicators on the Control Panel".

Printing Problems

Problem	Possible Cause	Corrective Action
Your printer does not print when you click on the Print icon on the task bar of the application you are using.	<ul style="list-style-type: none"> Your printer is not set as the default printer. Your printer is not properly connected to the computer. 	<ul style="list-style-type: none"> In Windows: <ol style="list-style-type: none"> Click Start > Settings > Printers. Right-click your printer's icon and select Set as Default. In Macintosh: <ol style="list-style-type: none"> Reinstall the software provided with the printer and check the print and spooler settings of the Mac OS X system. Turn off your printer and computer, and then unplug the USB cable from these two devices. Reattach the USB cable, then turn on the printer first followed by your computer.
The printing stops in the middle of a print job.	<ul style="list-style-type: none"> The paper is jammed. 	<ol style="list-style-type: none"> Clear the paper jam. See "Clearing Paper Jams". Press the Cancel button to reset the error condition. The print job continues from the next page.
Horizontal streaks are printed.	<ul style="list-style-type: none"> The ink cartridge is dirty. 	<ul style="list-style-type: none"> Clean the ink cartridge. See "Cleaning the Ink Cartridge Nozzles".
The printed characters are not properly defined.	<ul style="list-style-type: none"> The ink cartridge is no longer aligned. 	<ul style="list-style-type: none"> Align the ink cartridge from your computer. See "Aligning the Ink Cartridge From the Toolbox".

Meaning of the Indicators on the Control Panel

Problem	Possible Cause	Corrective Action
The out of ink icon on the control panel is flashing.	<ul style="list-style-type: none">The ink cartridge is almost out of ink.	<ul style="list-style-type: none">You can continue to print until the icon is illuminated.
The out of ink icon on the control panel is illuminated.	<ul style="list-style-type: none">The ink cartridge is out of ink.	<ul style="list-style-type: none">Replace the ink cartridge. For information, see "Replacing the Ink Cartridge".
The paper error icon on the control panel is illuminated.	<ul style="list-style-type: none">You launched a print job and there is no paper loaded in the printer.The size of the paper that is loaded does not match the paper size that you selected from the Toolbox application or from the PictBridge-compliant digital camera connected to the printer.A paper jam has occurred.	<ul style="list-style-type: none">Load paper. For information see "Loading Paper".Load the correct paper. For information see "Loading Paper".Clear the paper jam. For information see "Clearing Paper Jams".

CLEARING PAPER JAMS

- 1 Pull open the printer's right inner door.
- 2 Firmly grasp the jammed paper and gently pull it out from where it jammed. If the paper tears, make sure you remove all the torn pieces from the printer.
- 3 Close the printer's right inner door.
- 4 Press the **Cancel** button on the control panel to clear the error condition.
note: If the paper jam occurred when printing without a computer, the print job will continue from the next page.
If the jam occurred when using a computer, the pop-up screen displayed allows you to either continue to print from the next page or to cancel the print job.

6 TECHNICAL CHARACTERISTICS

GENERAL SPECIFICATIONS

PRINTER SPECIFICATIONS

PAPER SPECIFICATIONS

GENERAL SPECIFICATIONS

General Specifications

Display	2.4" colour Liquid Crystal Display for photo preview and selection.
Dimensions and weight	<ul style="list-style-type: none">• Height: 90 mm• Width: 220 mm• Depth: 162 mm• Weight: 1.6 Kg
Power source	<ul style="list-style-type: none">• External AC power supply unit with an input voltage of 100-240 Vac 1.2 A max. and an output voltage of 12 to 16 Vdc, 2A.• Car cigarette lighter DC adapter plugged into a 12V automobile cigarette lighter.• Six rechargeable AA size 1.2 V Nickel Metal Hydride (NiMH) batteries with a capacity of at least 2.2 Ah each.
Power consumption	Maximum 35 W
Connectivity	<ul style="list-style-type: none">• High-speed USB 2.0 interface for the connection of a personal computer.• PictBridge-compliant USB 1.1 for the connection of a digital camera.
Wireless Interface	<ul style="list-style-type: none">• Bluetooth 1.2 Class 2 for connection to compatible PCs and mobile phones.
Memory card interfaces	<p>Can accept the following memory card types:</p> <ul style="list-style-type: none">• Compact Flash I, II• Microdrive• SmartMedia• SecureDigital (Mini SD adaptor sold separately)• MultiMedia card• Duo, Pro, Magic Gate Memory Sticks (MS Pro adaptor sold separately)• xD-Picture card• Up to 2 GB memory cards. <p>All the images saved on memory cards can be displayed, selected and printed or saved on the computer also using the "Toolbox" program.</p>
Paper feed	<ul style="list-style-type: none">• Automatic sheet feeder from a paper cassette capable of holding up to 20 sheets of 280 gr/m² photo paper• Manual feed of a single sheet of plain A4 paper folded vertically in the middle
Temperature ranges	<ul style="list-style-type: none">• Operating: 15 °C to 35 °C• Storage: -5 °C to +45 °C (without the ink cartridge)• Transportation: -15 °C to +55 °C
Humidity ranges	<ul style="list-style-type: none">• Operating: 15% to 85%, non-condensing• Storage: 15% to 85%, non-condensing• Transportation: 5% to 95%, non-condensing

General Specifications

Software and documentation	<ul style="list-style-type: none">• Printer driver (WIN/MAC)• Toolbox (WIN/MAC)• User Documentation (WIN/MAC)• Additional software (WIN)
Minimum system requirements for the connected personal computer	Operating system: <ul style="list-style-type: none">• Microsoft Windows 98 SE, ME, Pentium II 500 MHz, 128 MB RAM, 150 MB HDU• Microsoft Windows 2000, Pentium III 650 MHz, 128 MB RAM, 200MB HDU• Microsoft Windows XP, Pentium III 650 MHz, 256 MB RAM, 200MB HDU• MAC OSX 10.2 Power PC G4, 256 MB RAM, 500 MB HDU
Supported files type	DCF, JPEG baseline, Exif, DPOF

PRINTER SPECIFICATIONS

Printer Specifications

Printing technology	Bubble ink-jet
Printing system	One, disposable 3-colour ink cartridge
Print resolution	<ul style="list-style-type: none">• 1200 x 1200 dpi• 4800 x 1200 dpi• 1200 x 600 dpi (text-based documents only received from a computer)
Print speeds	<ul style="list-style-type: none">• 1 page/90 sec, very high quality resolution on A6 size photo paper• 1 page/60 sec, high quality resolution on A6 size plain paper
Margins	Borderless on photo, coated and glossy paper, and on plain A4 paper folded vertically in the middle.

PAPER SPECIFICATIONS

Supported Paper Types

Paper type	Paper weight	Maximum feed capacity
10x15 / 4"x6" and A6 Coated paper	100 to 170 g/m ²	20 sheets
10x15 / 4"x6" and A6 Glossy paper	160 to 180 g/m ²	20 sheets
10x15 / 4"x6" and A6 Cards paper	130 to 280 g/m ²	20 sheets
10x15 / 4"x6" and A6 Photo paper	170 to 280 g/m ²	20 sheets
Dual A6 (A4 Plain paper sheet folded vertically in the middle)	80 to 90 g/m ²	Single sheet manual feed

Supported Paper Formats and Sizes

Format	Size
4x6" cards	102 x 152 mm
A6 cards	105 x 148.5 mm
Dual A6 (Folded A4)	105 x 297 mm
10 x 15 cards	105 x 150 mm

note: All of the above paper sizes are automatically detected by the printer.

INDEX

A

- Activation of bluetooth 13
 - in the Mac OS X environment 13
 - In the Windows environment 13
- Aligning the ink cartridges 31
 - from the Toolbox 31

B

- Battery 4
- Bluetooth 13, 20, 42

C

- Carrying your printer 12
- Checking ink levels 28
- Cleaning
 - the ink cartridge nozzles 34
 - your printer 34
- Clearing paper jams 39
- Connecting a digital camera to your printer 10
- Connectivity 42
- Control panel 4, 5
 - meaning of the LED indicators 39

E

- Error
 - paper jam has occurred 39
 - paper size 39
 - the black ink cartridge is out of ink 39

F

- Formats supported 43, 44
- Full-Screen Views 16
 - browse window 16
 - device icon 16
 - icon bar 16

- image Total field 16
- select frame 16

G

- General Specifications
 - connectivity 42
 - minimum system requirements 43
 - paper fee 42
 - software and documentation 43
 - wireless interface 42

H

- Help 23
- High-speed USB 2.0 42
- How to improve print quality of the photos 17
- Humidity ranges 42

I

- Improve photo print quality 26
- Ink cartridge 4
 - aligning 31
 - aligning from the Toolbox 31
 - checking levels 28
 - replacing 29
 - status monitor 23
- Inserting a memory card 10
- Interface USB 4

L

- Loading paper 7, 8
 - paper cassette 7
 - single sheet 7

M

- Magic 17
- Maintenance 33

- Meaning of the LED indicators 39

- Memory card 4, 22

- Minimum system requirements 43

N

- Nozzles check the quality 34
- Nozzles cleaning ink cartridge 34

P

- Paper
 - cassette 4
 - cassette insertion 4
 - exit slot 4
 - feed 42
 - jam clearing area 4
 - Jams 39
 - specifications 43
 - supported 43, 44
- Personalise your print settings 25
- Power connector 4
- Powering your printer 8
 - 12V car battery power supply 8
 - mains electrical power supply 8
 - rechargeable NiMH batteries 9
- Print photos 22
- Printer Bluetooth connection 13
- Printer specifications 43
- Printing 24
 - from your application using print properties 24
 - with the Toolbox print photos tool 25
- Printing photos
 - from a Bluetooth peripheral 20
 - from your DPOF digital camera 18
 - from your non-PictBridge/DPOF digital camera 19

- from your PictBridge digital camera 18
- Problem copying/scanning 39
- Problems
 - during printer setup 35
 - printing 38
 - when powering on the printer 38

R

- Removing a memory card 11
- Replacing the ink cartridges 29

S

- Selecting and printing photos from your memory card 17
- Setting up your printer 13
- Software and documentation 43
- Solutions and assistance 23
- Status monitor 23
 - error pop-ups 23

T

- Thumbnail views 17
 - browse frame 17
 - device icon 17
 - icon bar 17
 - image total field 17
 - photo indicator 17
 - select frame 17
 - thumbnail grid 17
- Toolbox 22
 - help 23
 - memory card file transfer 22
 - print photos 22
 - settings 23
 - solutions and assistance 23
- Transferring files from a memory card to your computer 26
- Troubleshooting 33, 35
- Turning your printer on and off 9

U

- USB
 - 2.0 high-speed 42
 - high-speed interface 4
 - installation 13

W

- Wireless interface 42

