

olivetti



SIMPLE_WAY USER GUIDE

Edited/Published/Produced by:
Olivetti S.p.A.
Gruppo Telecom Italia
Via Jervis, 77
Ivrea (TO)
Italy
www.olivetti.com

Copyright © Olivetti, 2007
All rights reserved

Code: 528013en

Date of publication: March 2007

Trademarks: *Microsoft* and *Windows* are registered trademarks of Microsoft Corporation.

Other trademarks and trade names may be used in this document to refer to either the entities claiming the marks and names or their products. Olivetti disclaims any proprietary interest in trademarks and trade names other than its own.



ENERGY STAR is a U.S. registered mark.

The ENERGY STAR program is an energy reduction plan introduced by the United States Environmental Protection Agency in response to environmental issues and for the purpose of advancing the development and utilization of more efficient office equipment.

The CE mark affixed to the product certifies that the product satisfies the basic quality requirements.



CONTENTS

1	GETTING STARTED	1
	OVERVIEW	2
	ACCESSING THE ONLINE HELP	2
	SAFETY INSTRUCTIONS	2
	INFORMATION ON PRINT QUALITY AND THE WARRANTY	3
	LOCATING YOUR PRINTER COMPONENTS	3
	PRINTER FRONT PANEL	5
	PLACING YOUR DOCUMENT ON THE SCANNER GLASS	6
	LOADING PAPER	7
	Loading Different Types of Paper	8
	PRINTER POWER SUPPLY	8
	PRINTER FRONT PANEL STATES	9
	CONNECTING A DIGITAL CAMERA TO YOUR PRINTER	9
	INSTALLING THE PRINTER VIA BLUETOOTH (BLUETOOTH MODEL)	10
	Activating Bluetooth	10
	USB Installation and Bluetooth Printing from Computer in Windows Environment	10
	Installing Bluetooth from Computer in Macintosh Environment	11
	Installing Bluetooth for Printing from Computer in Windows Environment	11
	INSTALLING THE PRINTER IN A WIRELESS NETWORK (WI-FI)	12
	CONNECTING THE PRINTER IN WI-FI (WI-FI MODEL)	13
2	USING YOUR PRINTER WITHOUT A COMPUTER	15
	COPYING A DOCUMENT	16
	CREATING AND PRINTING THE PHOTO INDEX	16
	PRINTING PHOTOS FROM YOUR PICTBRIDGE DIGITAL CAMERA	16
	PRINTING PHOTOS FROM YOUR DPOF DIGITAL CAMERA	17
	PRINTING PHOTOS FROM YOUR NON-PICTBRIDGE/DPOF DIGITAL CAMERA	17
	PRINTING PHOTOS FROM A BLUETOOTH DEVICE (BLUETOOTH MODEL)	17

3	USING YOUR PRINTER FROM A COMPUTER	19
	BEFORE YOU BEGIN	20
	THE TOOLBOX	20
	THE PRINTER STATUS MONITOR	21
	PRINTING, COPYING AND SCANNING FROM THE TOOLBOX	22
	PRINTING FROM YOUR APPLICATION USING PRINT PROPERTIES	23
	SCANNING AN ORIGINAL FROM YOUR APPLICATION	24
	SCANNING AN ORIGINAL FROM THE PRINTER FRONT PANEL	24
	HOW TO SET PARAMETERS TO IMPROVE PHOTO PRINT QUALITY	26
	SETTING PARAMETERS FOR WI-FI CONNECTION (WIFI MODEL)	26
	Declaring Network Addresses	28
	USING THE WEB SERVER (WIFI MODEL)	29
	Accessing Web Server Mode	29
	Entering WEP keys	30
	Entering WPA Coding Data	30
	BLUETOOTH SYSTEM SETTINGS (BLUETOOTH MODEL)	31
4	INK CARTRIDGES	33
	CHECKING INK LEVELS	34
	Information Required to Purchase New Ink Cartridges	34
	REPLACING INK CARTRIDGES	35
	ALIGNING INK CARTRIDGES	37
	Ink Cartridge Alignment Page	37
	Aligning Ink Cartridges From the Toolbox	37
	EXCHANGING BLACK AND PHOTO INK CARTRIDGES USING THE GARAGE	38
5	MAINTENANCE AND TROUBLESHOOTING	39
	CLEANING YOUR PRINTER	40
	Cleaning the Printer Casing, Scanner Cover Underside and Scanner Glass	40
	CLEANING THE INK CARTRIDGE NOZZLES	40
	TROUBLESHOOTING	41
	Problems During Printer Setup	41
	Problems Turning On the Printer	44
	Printing Problems	44
	Copying/Scanning Problems	45
	Meaning of LEDs on Front Panel	45
	CLEARING PAPER JAMS	46

6 TECHNICAL CHARACTERISTICS	47
GENERAL SPECIFICATIONS	48
PRINTER SPECIFICATIONS	49
COPIER SPECIFICATIONS	50
SCANNER SPECIFICATIONS	50
WI-FI SYSTEM SPECIFICATIONS	51
PAPER SPECIFICATIONS	52
Supported Paper Types	52
Supported Paper Formats and Sizes	53
 INDEX	 55

All information included herein is subject to change without notice. Olivetti S.p.A. is not responsible for any loss or damages, direct or indirect, arising from or related to the use of this operation manual.

MIPC (Mobile Imaging and Printing Consortium)

The MIPC is a non-profit industry association founded in 2004 by leading companies in home photo printing and the mobile phone industry. Its mission is to promote and support the development of interoperability guidelines enabling printing of images and other content between mobile phones and home printers. The guidelines are promoted for use internationally to ensure a broad spectrum of products and services for mobile phone consumers.
www.mobileprinting.org.

SIMPLE_WAY: This Mobile Printing Ready product is designed to provide easy printing from mobile phones. This product follows Mobile Imaging and Printing Consortium (MIPC) Implementation Guidelines for Printing with Mobile Terminals, Version 1.0, for : PictBridge.

SIMPLE_WAY Bluetooth: This Mobile Printing Ready product is designed to provide easy printing from mobile phones. This product follows Mobile Imaging and Printing Consortium (MIPC) Implementation Guidelines for Printing with Mobile Terminals, Version 1.0, for: Bluetooth, PictBridge.

SIMPLE_WAY Wifi: This Mobile Printing Ready product is designed to provide easy printing from mobile phones. This product follows Mobile Imaging and Printing Consortium (MIPC) Implementation Guidelines for Printing with Mobile Terminals, Version 1.0, for: Wifi, PictBridge.

1 GETTING STARTED

OVERVIEW

ACCESSING THE ONLINE HELP

SAFETY INSTRUCTIONS

INFORMATION ON PRINT QUALITY AND THE WARRANTY

LOCATING YOUR PRINTER COMPONENTS

PRINTER FRONT PANEL

PLACING YOUR DOCUMENT ON THE SCANNER GLASS

LOADING PAPER

PRINTER POWER SUPPLY

PRINTER FRONT PANEL STATES

CONNECTING A DIGITAL CAMERA TO YOUR PRINTER

INSTALLING THE PRINTER VIA BLUETOOTH (BLUETOOTH MODEL)

INSTALLING THE PRINTER IN A WIRELESS NETWORK (WI-FI)

CONNECTING THE PRINTER IN WI-FI (WI-FI MODEL)

OVERVIEW

This multi-functional product performs the functions of a high quality ink-jet printer and of a flatbed type A4 format colour scanner, allowing you to print, scan and copy B/W and colour documents and images.

The multi-functional printer is equipped with two heads, black and colour, for normal printing and copying operations. To print photographs and obtain a quality comparable with that of a photographic laboratory, you can replace the black head with the photographic head which is sold separately.

note: The black, colour and photographic ink cartridges are available also in a High Capacity version.

The multi-functional printer can also be used without a computer to make copies and to print photographs simply connecting the digital camera to the USB interface on the front panel, inserting a USB memory into the related connector or using the Photo Index. The installation CD contains the software for connecting to a personal computer and for managing documents and images. It also contains the Olivetti Toolbox application program that permits fast access to all available capabilities.

The Bluetooth model allows direct printing of images captured with a mobile phone via Bluetooth.

The wi-fi model allows use in “wireless” mode using the Wi-Fi connection: radio connectivity is integrated.

Initial installation and any configuration of the multi-functional printer in Wi-Fi mode are always carried out using the USB cable; the cable can be removed subsequently for wireless mode operation.

note: To install the wi-fi model, follow the instructions provided in the Wifi Info manual.

ACCESSING THE ONLINE HELP

This User Guide provides you with the basic operating information you need to use the features offered by your all-in-one printer. If you require further detailed information, refer to the Online Help.

To access the Online Help:

- 1 Select the **Help** button in the dialogue boxes.

SAFETY INSTRUCTIONS

Read and follow attentively the instructions below:

- Use only the power cord provided with this product, or a power cord authorised by the manufacturer.
- Connect the power cord to a grounded electrical outlet that is near the product and within easy access.
- Install your printer on a flat, stable surface, in a location where no one can step on or trip over the power cord.
- Do not use your printer near water, or with wet hands.
- Do not expose your printer to rain or moisture.
- Do not attempt to disassemble your printer.
- Observe all warnings and instruction markings on your printer.
- Read and understand all the documentation supplied with your printer.

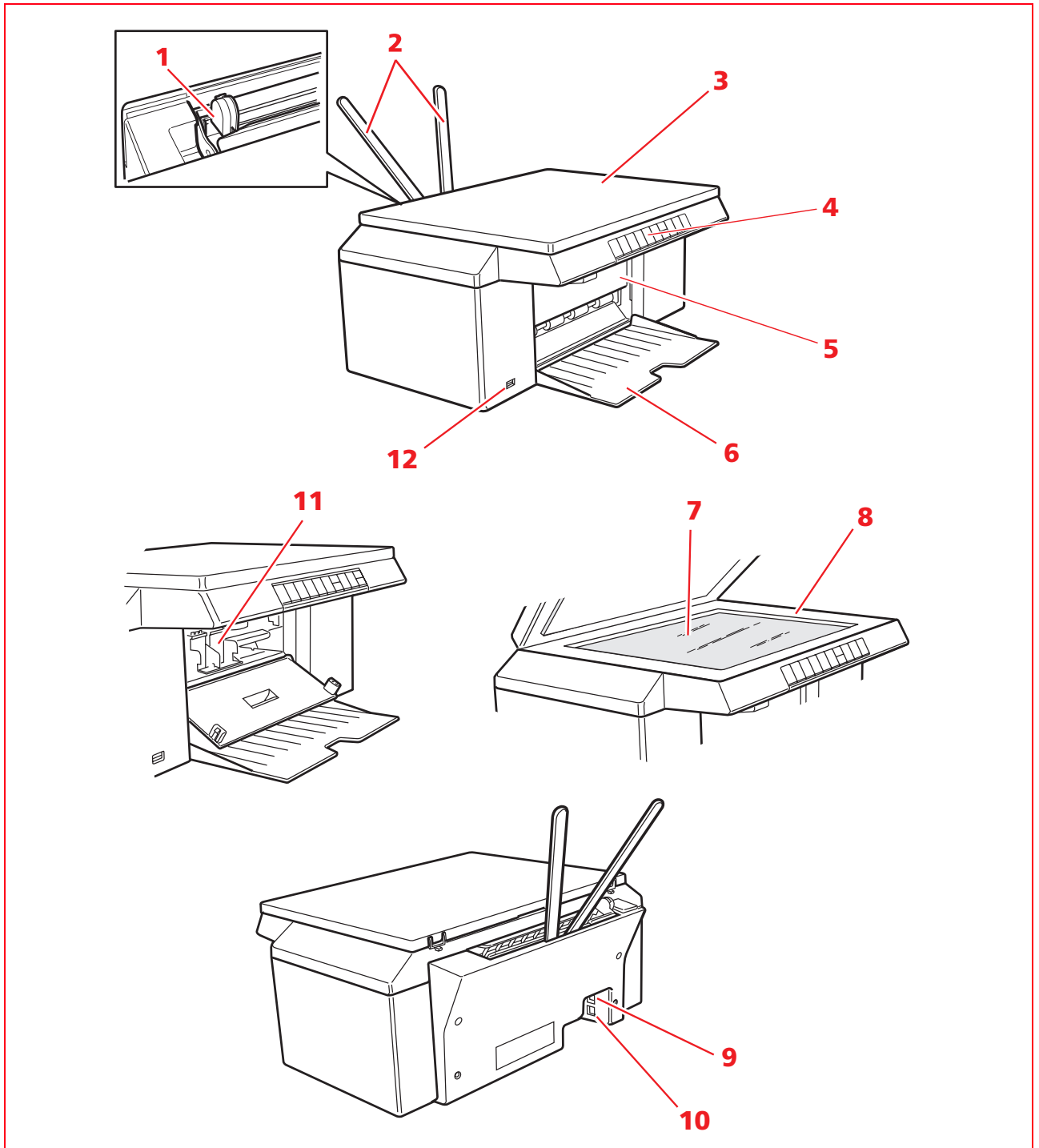
note: This product works correctly and complies with safety norms when used with the AC power supply unit provided by the manufacturer. When using different power sources than those provided in the product package, it is the responsibility of the user to guarantee compliance with safety norms and with the correct power ratings this product requires.

INFORMATION ON PRINT QUALITY AND THE WARRANTY

To guarantee correct operation of your printer and top quality printing, you must use only original Olivetti ink cartridges.

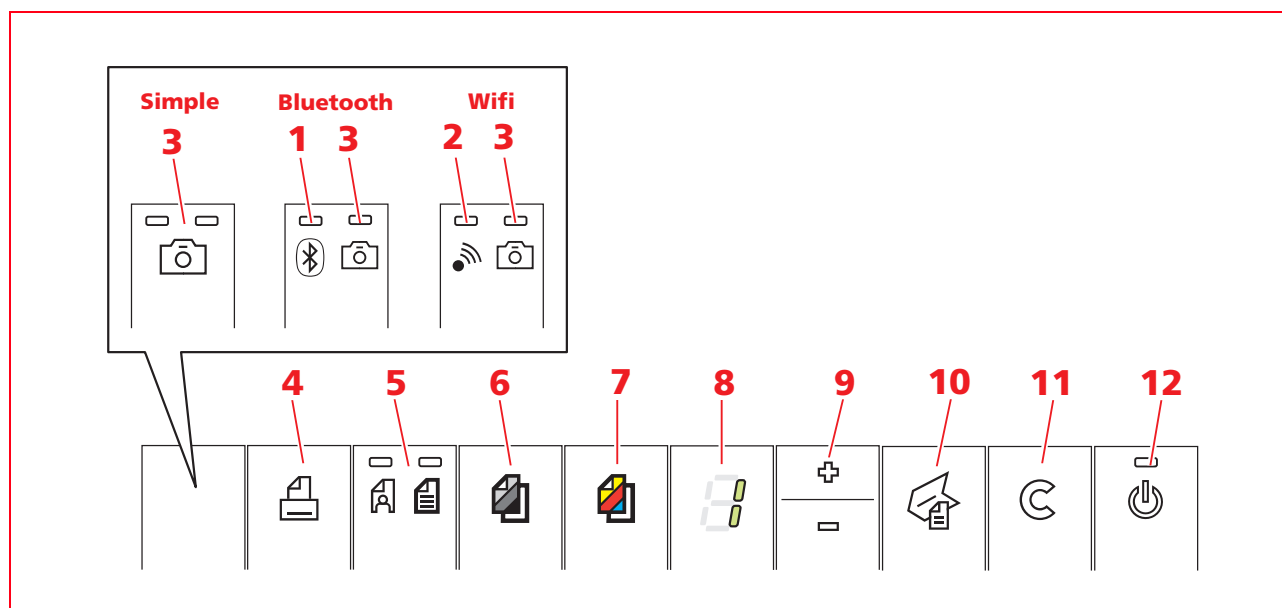
Olivetti declines any responsibility for damage to your printer caused by the tampering with, or refilling, ink-jet cartridges. Such conduct also implies forfeiture of the Warranty.

LOCATING YOUR PRINTER COMPONENTS



Reference	Part	Description
1	Paper guide	Guides the paper being fed into the printer.
2	Paper support (ASF)	Supports the loaded paper.
3	Extractable cover of exposure bed	Cover of the scanner. Can be removed to scan bulky documents (such as books).
4	Front panel	Used to switch the printer ON and OFF, and to control print, copy and scan operations.
5	Front hatch	Gives access to the compartment containing the print cartridges.
6	Paper tray	Collects the printed paper as it is ejected from the printer.
7	Exposure bed	Surface on which to position the document or photo to be copied or scanned, face down. See "Positioning the document on the Exposure Bed".
8	Scanning unit	Unit containing exposure bed on which to place original.
9	Power connector	Connect the power cable of the external universal power supply unit, furnished with the product, to the printer. Then connect the other end of the external power supply unit with the mains cable to a grounded electrical outlet. note: First of all, connect the cable to the printer, and then to the outlet.
10	High speed USB interface	Using the USB cable to be used for connecting the computer (not included), plug one end into the printer and the other end into the USB port on the computer.
11	Cartridge carrier	Supports two ink cartridges. The colour cartridge is installed on the right while the black cartridge (or photographic cartridge, sold separately) is installed on the left. To replace ink cartridges, see "Replacing Ink Cartridges".
12	Front panel USB interface	Connects the USB cable of the digital camera, a USB memory (Mass Storage).

PRINTER FRONT PANEL

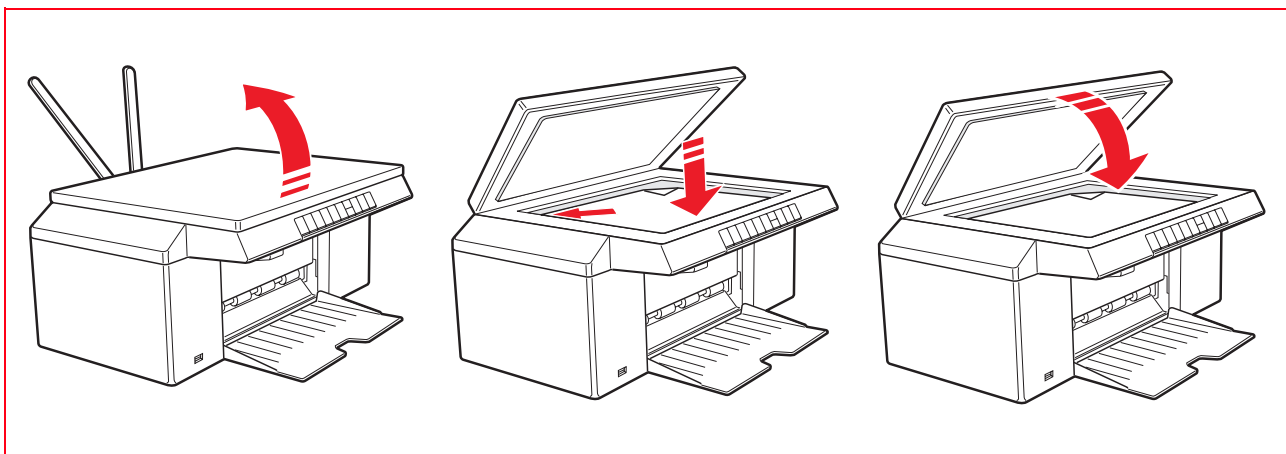


Reference	Part	Description
1	Bluetooth icon (Bluetooth model)	Changes to blue to indicate that Bluetooth connectivity is active and available for a connection.
2	Network icon (wi-fi model)	Changes to green to indicate that it is connected to the Wi-Fi network.
3	USB status LED for PictBridge connection	Changes to green to indicate that a digital camera or USB memory (Mass Storage) is connected.
4	Print button	Enabled when a non PictBridge digital camera or USB memory (Mass Storage) is connected to the USB interface on the front panel. In these conditions, if pressed, the Photo Index is printed.
5	Quality selection button	Select print or copy quality. The printer automatically regulates its own print resolution (high or normal) according to the quality selected. Photo mode is recommended if the original to be copied is an image, or when printing on photographic paper.
6	B/W copy button	Select a B/W copy. Press and hold down to activate the "Adapt to format" capability. See "Copying a document".
7	Colour copy button	Select a colour copy. Press and hold down to activate the "Adapt to format" capability. See "Copying a document".
8	Copy counter	Displays the number of copies selected. The counter value decreases as copies are printed. Flashes displaying an "E" to indicate a printer error condition.
9	Copy selection button	<ul style="list-style-type: none"> Press the Plus (+) sign to increase the number of copies (max. 9) to be made. Press the Minus (-) sign to reduce the number of copies (min. 1) to be made. The number selected is displayed by the copy counter.

Reference	Part	Description
10	Scan button	<ul style="list-style-type: none"> Enabled when the printer is connected to a computer. Press this button to scan the document or photo placed on the exposure bed. <p>See "Scanning from the Front Panel". A Toolbox window is displayed allowing you to send the image directly to an application of your choice, or to personalise scan settings.</p>
11	Cancel button	<ul style="list-style-type: none"> Allows you to cancel immediately an on-going print or copy operation, causing ejection of the paper. Restores selections to the factory settings (default values).
12	On/Off button	<p>Use to switch the printer On and Off.</p> <p>When the printer is ON, the button illuminates, flashing during printing phases. If an error occurs, for example paper or cartridge out, the button flashes.</p>

PLACING YOUR DOCUMENT ON THE SCANNER GLASS

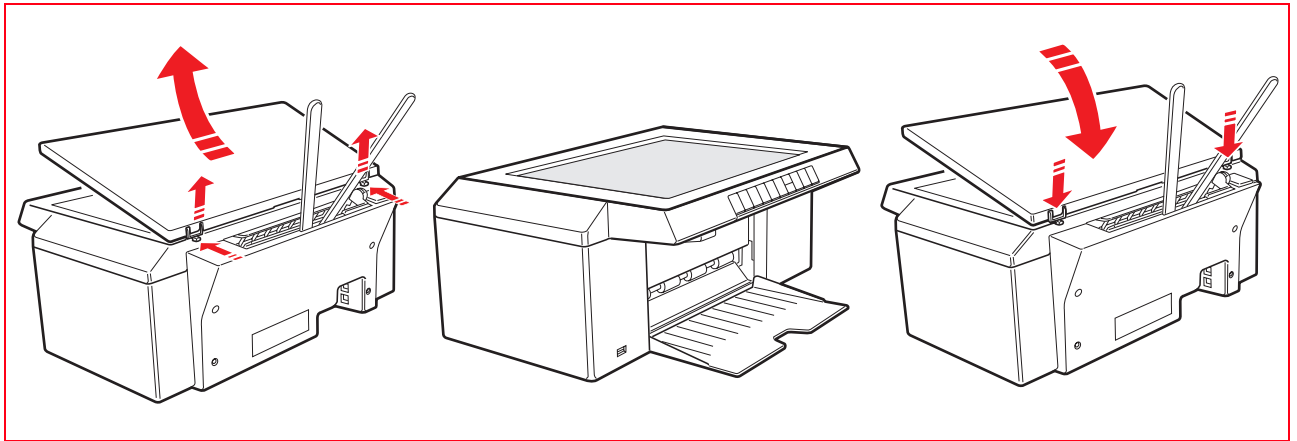
- 1 Open the top cover.
- 2 Position the original document or photo to be scanned face down on the scanner glass, aligned with the upper left corner. Close the top cover.



Placing a Bulky Document on the Exposure Bed

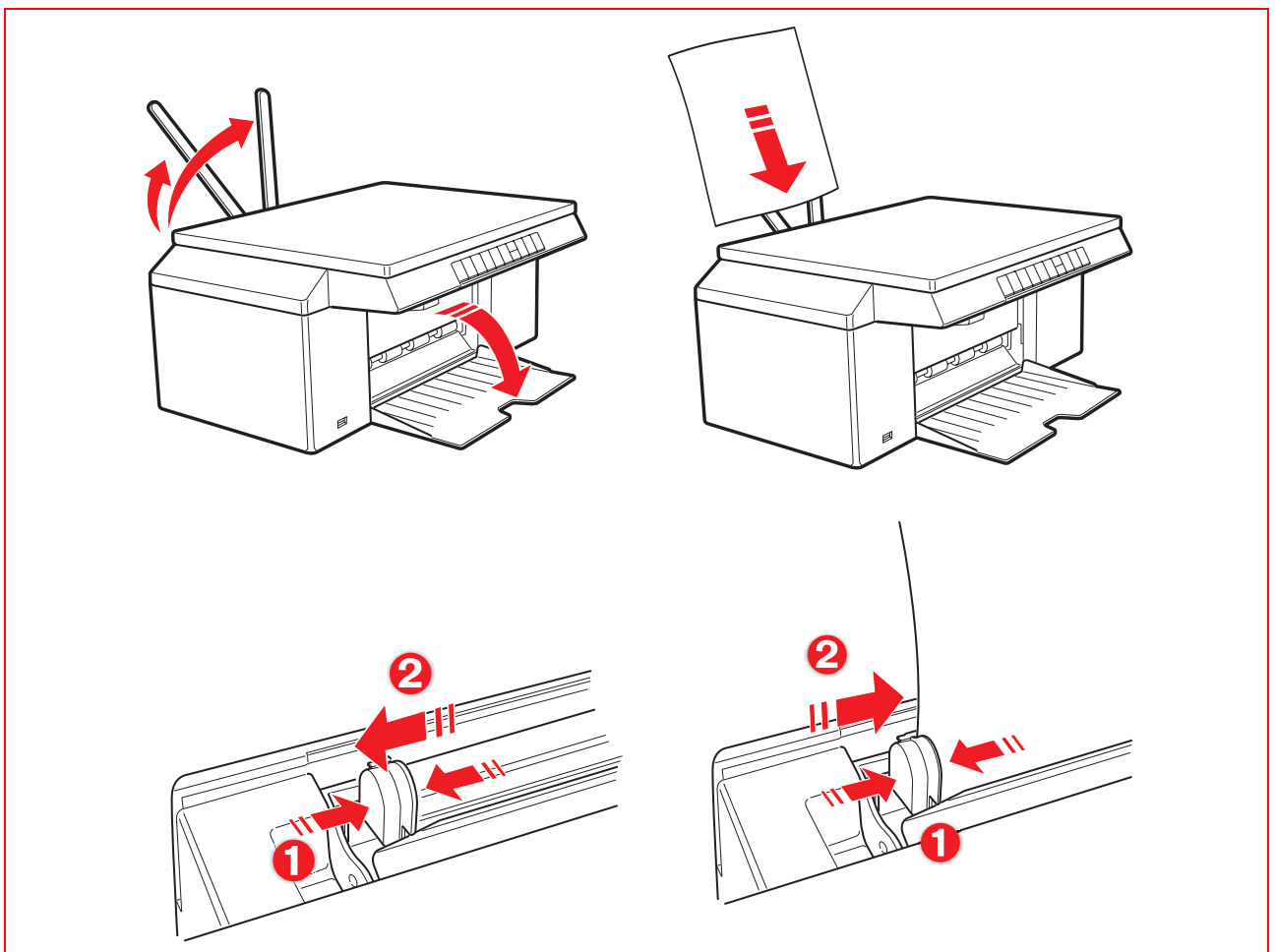
- 1 To copy a bulky document, such as a book, release the cover from its runners by pressing its securing fixtures and slide it off.
- 2 Place the original document or photo to be scanned face down on the scanner glass, aligned with the upper left corner. Close the top cover.

- 3 If the top cover was removed, replace it after copying by sliding its tabs into the related slots on the rear of the printer until they click into place. Close the top cover.



LOADING PAPER

- 1 Raise the two paper supports into their upright position, then press the paper-width guide and slide it to its outermost position.
note: When raising the paper supports make sure they are in their correct upright position.
- 2 Load the paper vertically (portrait orientation), the side to print on facing the front of the printer and against the guide on the right side of the paper support. Pressing the left paper guide, slide it up against the left edge of the paper.



Loading Different Types of Paper

To load:

Proceed as follows:

Plain paper, coated paper, glossy paper, photo paper, greeting cards, index cards, post cards, envelopes, transparencies, ink-jet labels

- Load the media vertically up against the right side of the paper support, with the print side facing up.
- Pressing the paper guide, slide it up against the left edge of the paper.
note: Load letterhead paper with the top of the letterhead entering the printer first, facing up.

Banner paper

- Remove all paper from the paper support.
- Insert the leading edge of the banner paper vertically into the printer, against the right side of the paper support and with the print side facing up.
note: Do not use perforated fan-fold banner paper.
- Press the paper guide and slide it up against the left edge of the banner paper.

Iron-on transfers

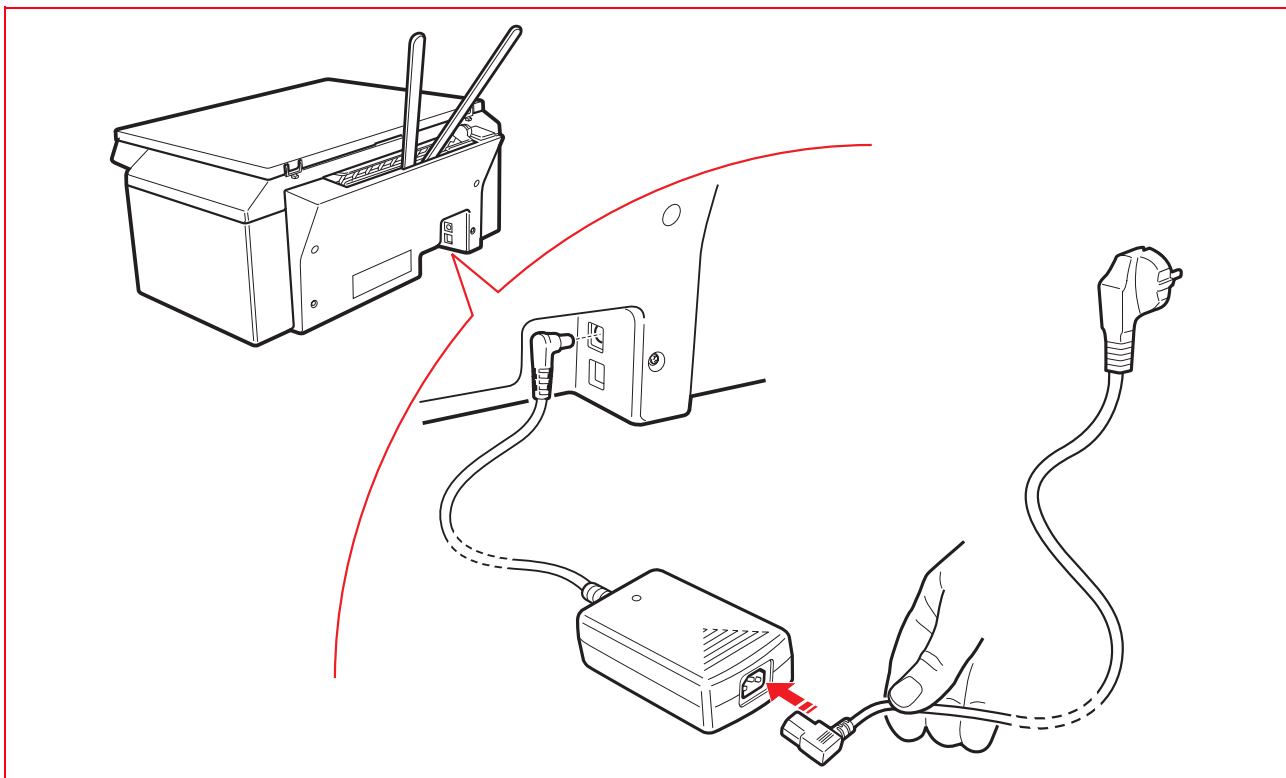
- Read the instructions on the transfer packet.
- Load the sheets vertically against the right-hand side of the paper support and with the side to be printed facing towards the front part of the machine.
- Press the paper guide and slide it up against the left edge of the transfer.

PRINTER POWER SUPPLY

The printer can be supplied with power from the mains using the external AC power supply unit provided.

Connecting the power supply unit to the mains outlet:

- 1 Insert the plug of the external AC power supply unit cable into the printer socket.
- 2 Insert one end of the power supply cable into the power supply unit and the other end into the electrical outlet.



PRINTER FRONT PANEL STATES

Press the On/Off button on the right side of the front panel.

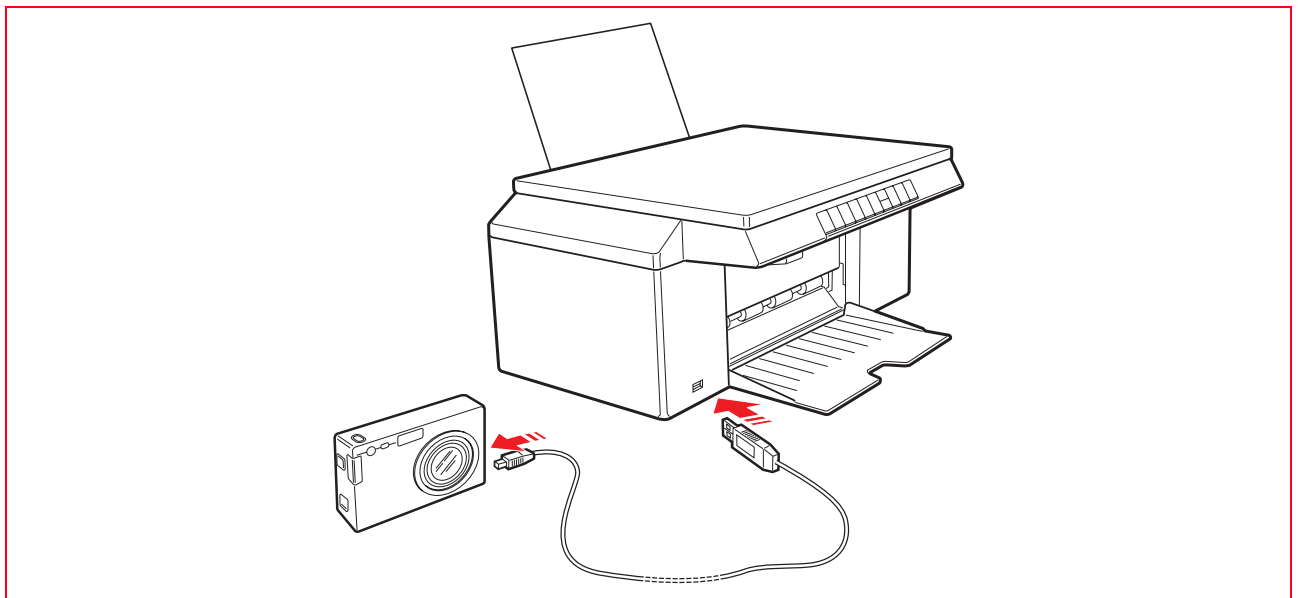
note: Before pressing the On/Off button, make sure that the power supply cable is connected to a grounded electrical outlet. For information relating to printer installation see the printer Installation Guide.

After pressing the On/Off button, the printer performs a set of self-tests to detect any system malfunctioning. Errors detected during this phase are either signalled on the front panel or on the personal computer connected to the printer. For appropriate corrective measures in the case of errors, see "Meaning of Front Panel LEDs".

On completion of the self-test phase, if no errors are detected, the On/Off button illuminates.

CONNECTING A DIGITAL CAMERA TO YOUR PRINTER

- 1 Turn on your digital camera. Read its User's Guide if you require for more information.
- 2 With your printer powered on, take your digital camera's USB cable and plug one end into the USB connector on the camera itself, and the other end into the USB connector on the printer front panel.



The green USB status LED illuminates when a digital camera or USB memory is connected. If the printer does not recognise the camera connected, the LED remains off.

INSTALLING THE PRINTER VIA BLUETOOTH (BLUETOOTH MODEL)

Printing over the Bluetooth wireless connection is possible if this capability is integrated in the computer, or if an external Bluetooth device is installed (e.g. a Bluetooth USB pen). The Bluetooth function must be active on the printer.

The range of the Bluetooth system is usually around 10 metres but this can vary according to the characteristics of the environment in which it is installed.

The printer supports the Bluetooth 1.2 Class 2 communications system for connecting to compatible computers and cell phones.

The installation method varies according to the type of printer use.

Activating Bluetooth

The printer is configured for using Bluetooth from compatible cell phones and does not require any type of installation.

To verify if the Bluetooth capability is available, see if the blue LED of the Bluetooth icon is ON.

If it is OFF, proceed as follows:

- *In the Windows environment:*
 - 1 Carry out USB installation as described in the documentation "**Setting up Your Printer**".
note: If installation has already been performed, it is not necessary to repeat it.
 - 2 Open the Toolbox program (**Start > Programs > Olivetti > Olivetti Toolbox**).
note: The USB cable must be connected and the printer must be ON.
 - 3 Click on the "**Settings**" button and then on "**Bluetooth Settings**" to access Bluetooth parameter configuration.
 - 4 Enable Bluetooth mode and click on "**Send settings**": wait for the data of the Bluetooth network present to be automatically received: the blue light on the printer illuminates.
Close the "**Toolbox**" program.
 - 5 The printer is now able to operate in the Bluetooth environment.
If a password is requested during the connection phase, enter "**0000**" (or other, user-defined, password) using the "Toolbox" application (**Start > Programs > Olivetti > Olivetti Toolbox**).

- *In the Mac OS X environment:*
 - 1 Carry out USB installation as described in the documentation "**Setting up Your Printer**".
note: If installation has already been performed, it is not necessary to repeat it.
 - 2 Run the Toolbox program from the desktop.
note: The USB cable must be connected and the printer must be ON.
 - 3 Click on the "**Settings**" button and then on "**Bluetooth Settings**" to access Bluetooth parameter configuration.
 - 4 Click on "**Bluetooth Status**". Activate Bluetooth mode and wait for the data of the Bluetooth network present to be automatically received: press "**Apply**".
Close the "**Toolbox**" program.
 - 5 The printer is now able to operate in the Bluetooth environment.
If a password is requested during the connection phase, enter "**0000**" (or other, user-defined, password) using the "Toolbox" application (**Start > Programs > Olivetti > Olivetti Toolbox**).

USB Installation and Bluetooth Printing from Computer in Windows Environment

Printing on the Bluetooth wireless connection is possible if this capability is integrated in the computer, or if an external Bluetooth device is installed (e.g. a Bluetooth USB pen). The Bluetooth function must be active on the printer.

- *In the Windows environment*
 - 1 Carry out USB installation as described in the documentation "**Setting up Your Printer**".
 - 2 Activate Bluetooth mode on the computer (depends on the Bluetooth device installed).
Make a note of the **COM port** that the Windows system has assigned to the Bluetooth channel (on Windows Xp, the Bluetooth icon is available in the systray to search for the connected devices; for other operating systems, consult the provider's manual).

- 3 Open the **Printers>** folder and click on **Add Printers>**. Follow the instructions to add a printer and select **local or network printer>** then **Select the printer port >** and set the Bluetooth communication COM port noted previously.
Select **Install printer software>**, locate and select the SIMPLE_WAY Bluetooth Olivetti printer model and add it to the list of available printers (when the presence of the driver is checked, confirm **"Maintain existing driver"**).
For further information on how to add a printer to the system, refer to the operating system documentation.

Installing Bluetooth from Computer in Macintosh Environment

Wireless mode printing is possible via the Bluetooth connection if the computer is fitted with this integrated capability, or an external Bluetooth device is installed (for example a Bluetooth pen). The Bluetooth function on the printer must be active (blue led ON).

- 1 To set the printer to Bluetooth mode, select **System preferences > Bluetooth>**.
- 2 Click on **"Devices"** and then on **"New device"**.
The **"Bluetooth Guided Setting"** appears on the screen.
- 3 Click on **"Continue"** and then select the type of device: **"Printer"**.
- 4 Continue **"Guided Setting"** selecting **"Search for the printer"**, and then follow the instructions provided on the screen.
- 5 Assign the printer the name **"SIMPLE_WAY Bluetooth"** and complete installation.

Installing Bluetooth for Printing from Computer in Windows Environment

Printing on the Bluetooth wireless connection is possible if this capability is integrated in the computer, or if an external Bluetooth device is installed (e.g. a Bluetooth USB pen).

The Bluetooth function must be active on the printer.

The Bluetooth connection to the printer is made via a COM port available on the system.

note: In the case of a previous USB installation, this must be removed from the system before proceeding.

note: Before continuing, make sure that the Bluetooth system is active and functioning; otherwise contact the hardware manufacturer, or consult the specific documentation of the installed product.

With the Bluetooth connection, you cannot use the "copy" and "scan" functions; the Toolbox program is not available. The "copy" function can be run from the keyboard on the printer front panel.

- 1 Activate **Bluetooth** mode on the computer (depends on the Bluetooth device installed).
Make a note of the **COM port** that the Windows system has assigned with the Bluetooth channel (In the Windows Xp environment, the Bluetooth icon is available in the systray in order to search for the connected devices; for other operating systems, consult the provider's manual).
- 2 Switch on the computer and insert the "Installation" CD-ROM (c) in the drive.
- 3 In the initial screen page, select the **Language** desired and click on **Next>**; in the next screen page, select **Bluetooth>** and follow the instructions on the screen.
note: If the installation screen page is not displayed, click on **Start> Execute> Browse**, select the CD-ROM drive and click on Setup.exe.
note: If USB installation has been carried out previously, it must be removed from the system before proceeding.
- 4 When the **COM** communication port is requested, select that assigned to Bluetooth as noted previously and complete installation.

The printer has been added to the list of printers available on the system and can now operate in the Bluetooth environment.

**CAUTION: With the Bluetooth connection, you cannot use "copy" and "scan" functions; the Toolbox program is not available.
The "copy" function can be run from the keyboard on the printer front panel.**

Prerequisites

For initial installation or configuration of the printer, you need the following:

- A USB cable (not included in the package)
- A desktop or portable computer with active wireless device
- In the case of installing in infrastructure mode, an operative and working wireless network.

note: If you have just bought a portable or a desktop computer, consult the user guide provided to activate the wireless network and define its settings.

Installation

To correctly install the printer in Wi-Fi mode:

- *Carry out USB installation*
- *Activate the Wi-Fi component of the printer*
To enable wireless communication from the computer, use the printer software (Toolbox application), selecting Ad-Hoc mode (peer to peer) or Infrastructure (with access point)
- *Create the network connection between the computer and the printer*
- *Perform Wi-Fi installation*
To add the printer to the list of printers available in the system.

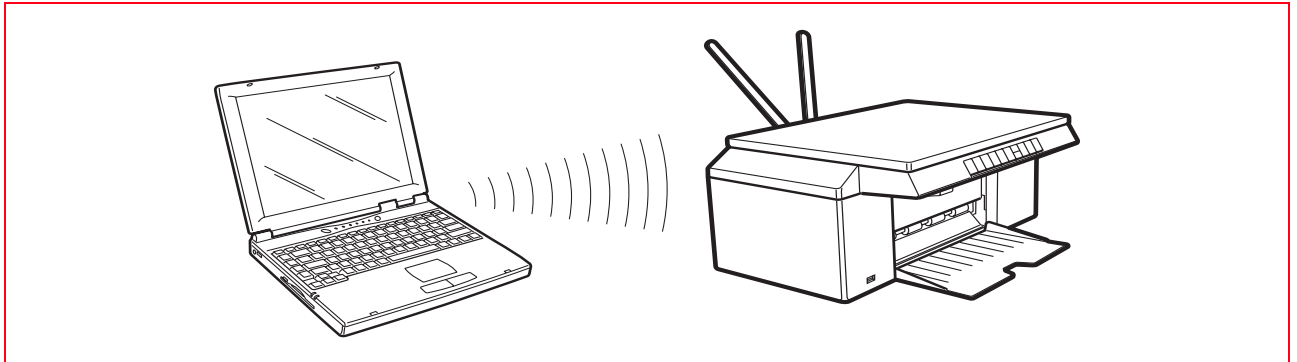
USB and Wi-Fi installation are carried out using the same "Installation" CD-Rom provided with the printer. On completion, you can use the connection via USB cable and wireless (Wi-Fi) mode.

For further information, consult the "Wifi Info" guide.

CONNECTING THE PRINTER IN WI-FI (WI-FI MODEL)

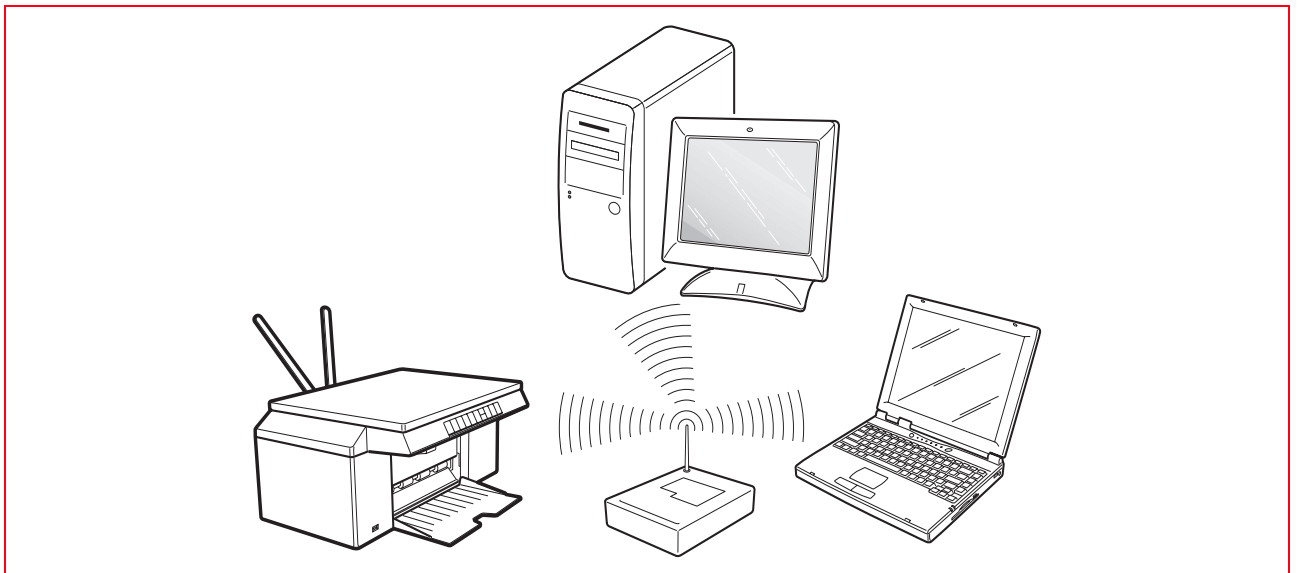
The printer can be connected to a computer directly (ad Hoc mode) or via a pre-existing wireless network (infrastructure mode):

- **Ad hoc (Peer-to-Peer) (factory setting):** The printer communicates directly with the computer; to create the connection, both must have a wireless adapter. Check that the computer to be connected to the printer is fitted with a wireless device and that this is active; consult the operating guide provided with the computer. Use of ad hoc mode is generally restricted to simple wireless networks of reduced size, as performance tends to downgrade considerably after connection of several network peripherals.



note: (photo wireless model) when wireless connectivity and Bluetooth connectivity are both available, only one can be active at any given moment.

- **Infrastructure (point of access):** The printer communicates with the network computers through a wireless access point. The access point acts as hub (signal repeater) and may have a central gateway for connecting peripherals. Each computer and printer must have a wireless network adapter for connecting to the point of access.



2 USING YOUR PRINTER WITHOUT A COMPUTER

COPYING A DOCUMENT

CREATING AND PRINTING THE PHOTO INDEX

PRINTING PHOTOS FROM YOUR PICTBRIDGE DIGITAL CAMERA

PRINTING PHOTOS FROM YOUR DPOF DIGITAL CAMERA

PRINTING PHOTOS FROM YOUR NON-PICTBRIDGE/DPOF DIGITAL CAMERA

PRINTING PHOTOS FROM A BLUETOOTH DEVICE (BLUETOOTH MODEL)

COPYING A DOCUMENT

- 1 Turn on your printer.
- 2 Load the paper on which you want to print.
- 3 Open the top cover and place the document you want to copy face down on the scanner glass. Make sure the upper left corner of the front of the item aligns with the upper left corner of the scanner glass.
- 4 Close the top cover.
- 5 Select the print or copy quality, either Photo or Normal, by pressing the Quality button. If you are copying a normal black/white text or a mixed black/white and colour document, choose Normal. If you are copying a photo or document with photos, choose Photo.
- 6 To make more than one copy, press the **Plus sign (+)** on the Copy selection button the number of times necessary until the number of copies is displayed on the copy counter.
- 7 Press the Black Copy button to create a black and white copy, or press the Colour Copy button to create a colour copy.

note: If you are copying on different paper sizes with respect to the size of the original, press and hold down the Black Copy or Colour Copy button to activate the Fit-to-Page feature. The printer automatically adjusts the size of the original document to fit the size of the paper loaded.

CREATING AND PRINTING THE PHOTO INDEX

When a non-PictBridge device is connected to the printer and DPOF files are not associated with the images saved, the **Print** button is active on the printer display (the Print button is illuminated). If the **Print** button is pressed without having selected any of the images displayed, Photo Index printing is initiated.

note: You must have A4 format paper in the paper support.

The Photo Index contains the images with borders in a 5x4 thumbnail format and a space is provided under each for you to define the number of copies (1 to 4). At the bottom of the page, you can choose printing with or without borders and the full formats, 2x1, 4x1.

The Photo Index, completed with your settings, must be positioned on the exposure bed of the scanner and printing is started by pressing the **Print** button for a few seconds.

The printer recognises the Photo Index positioned on the exposure bed and the photos selected are printed as indicated.

Print quality must be set from the front panel of the printer, while the image is adapted automatically to the format of the paper present in the paper feed.

The Photo Index can be re-used several times. To re-use it correctly, the same device must be present, the same photos positioned in the same order, and the device must be connected to the printer.

PRINTING PHOTOS FROM YOUR PICTBRIDGE DIGITAL CAMERA

To obtain the best results when printing photos, you are advised to install the colour cartridge and the photo cartridge and to use photographic paper. See "Replacing the Black Ink and Photographic Cartridges Using the Garage".

- 1 Make sure your PictBridge digital camera is turned on and connected to the printer. For more information, see "Connecting a Digital Camera to Your Printer".
- 2 Printing is controlled directly by the camera. The printer automatically recognises the format of the ASF. Read your camera's User Guide for instructions on how to print photos. During printing, the Print button flashes to indicate that a print job is under way.

note: If the size of the paper loaded in the printer differs from the paper size selected from the digital camera for printing and you begin printing, the printed output will be wrong.

If this function is not available on the camera, printing is carried out using the paper format present in the tray.

PRINTING PHOTOS FROM YOUR DPOF DIGITAL CAMERA

Your printer is able to recognise the DPOF information associated with picture files. In the case of a DPOF digital camera, the printer prints the photos that you select directly from your camera.

note: Before proceeding, make sure that your digital camera is DPOF-complaint by reading the camera's User Guide.

To obtain the best results when printing photos, you are advised to install the colour cartridge together with the photo cartridge, and to use photographic paper. See "Exchanging Black and Photo Ink Cartridges".

- 1 Make sure your DPOF digital camera is turned on and connected to the printer. For more information, see "Connecting a Digital Camera to Your Printer".
- 2 Select the print Quality according to your printing requirements.
- 3 Press the **Print** button on your printer front panel to print your photos. For more information see "Printer Front Panel".

note: If the size of the paper loaded in the printer is different from the paper size selected from the digital camera for printing and you begin printing, the printed output will be wrong.

If this function is not available on the camera, printing is carried out using the paper format present in the tray.

PRINTING PHOTOS FROM YOUR NON-PICTBRIDGE/DPOF DIGITAL CAMERA

- 1 Make sure that paper is loaded into the printer and that you have made your quality selection (Normal when printing on plain paper, Photo when printing on special ink-jet paper). For information, see "Loading Paper" and "Printer Front Panel".
- 2 Make sure your digital camera is turned on and connected to the printer. For more information, see "Connecting a Digital Camera to Your Printer".
- 3 Press the **Print** button on your printer front panel. The photos stored in the memory of your camera will be printed.

PRINTING PHOTOS FROM A BLUETOOTH DEVICE (BLUETOOTH MODEL)

The Bluetooth model is equipped with an integrated Class 2 Bluetooth component.

The default password is 0000 so that you can directly print any file sent from a mobile phone located within a 10-metre radius from the printer.

note: If your printer is connected to a computer via USB cable, you can change your printer's default Bluetooth password using the Toolbox Settings utility.

- 1 Make sure that paper is loaded into the printer. For information see "Loading Paper".
- 2 Turn on your printer. Bluetooth capabilities are automatically activated on your printer.
- 3 Turn on the Bluetooth peripheral from which you want to print and, within 10 metres from the printer, launch a Bluetooth discovery procedure directly from your peripheral. By activating this procedure, your Bluetooth peripheral searches for another Bluetooth device in the vicinity (in this case, your printer) with which it can share data. For information on how to launch a Bluetooth discovery procedure, read your peripheral's User Guide.
- 4 When your Bluetooth peripheral has discovered your printer, launch the print job directly from your Bluetooth device. For instructions, read the peripheral User Guide.
The Bluetooth icon on the front panel flashes as photos are being transferred from the Bluetooth device to your printer for printing. See "Printer Front Panel".

3 USING YOUR PRINTER FROM A COMPUTER

BEFORE YOU BEGIN

THE TOOLBOX

THE PRINTER STATUS MONITOR

PRINTING, COPYING AND SCANNING FROM THE TOOLBOX

PRINTING FROM YOUR APPLICATION USING PRINT PROPERTIES

SCANNING AN ORIGINAL FROM YOUR APPLICATION

SCANNING AN ORIGINAL FROM THE PRINTER FRONT PANEL

HOW TO SET PARAMETERS TO IMPROVE PHOTO PRINT QUALITY

SETTING PARAMETERS FOR WI-FI CONNECTION (WIFI MODEL)

USING THE WEB SERVER (WIFI MODEL)

BLUETOOTH SYSTEM SETTINGS (BLUETOOTH MODEL)

BEFORE YOU BEGIN

This chapter outlines the basic operating information you need to start using your printer connected to a computer. For more information to take full advantage of all the features offered, read the Online Help.

To access the Online Help from Windows:

- 1 Select the **Help** button in the dialogue boxes.

Before you begin:

- 1 Make sure that your printer and personal computer are connected properly and that the software on the "Installation" CD-ROM was successfully installed on the computer as indicated in the Setup Diagram provided with your printer.
- 2 Load the paper on which you want to print. For more information see "Loading Paper".
- 3 Make sure that the out-of-black or out-of-colour indicators on the front panel are not flashing, or not illuminated. If either one is, it is suggested that you replace the corresponding ink cartridge. For more information see "Replacing Ink Cartridges".

THE TOOLBOX

The Toolbox application allows you to control printing, copying, and scanning operations directly from a single user interface on your computer monitor. You can also fax the document that you have scanned with your all-in-one printer if a fax application is installed on your computer and your computer is equipped with a modem.

For the Wifi model, the parameters necessary to access a Wi-Fi network can be set.

Included in the "Installation" CD-ROM, the Toolbox is installed automatically on your computer when you install the software contained on this CD-ROM.

note: "Guided printer installation" uses a network protocol to send and receive information. During this exchange of information, when a firewall has been activated, certain communications may be blocked. Make sure that the network port used by the printer is "open", i.e. is unaffected by this block (the predefined setting of the printer port is UDP).

In the case of irregular or discontinuous functioning, check the PC firewall settings in the Windows 2000/XP environment. To do this, from "network resources", select the connection concerned and using the mouse right button access properties and then firewall settings. You should disable the UDP port or, if in doubt, disable the protective action of the firewall.

note: "Guided installation of the printer" in the Mac OS X environment detects only printers shared via the "Share printer" option when the computer uses the Mac OS X 10.2 (or higher) system.

From the Toolbox main screen, you can:

- Print images and make copies.
- Scan documents or photos and decide where to send the scanned image.
- View the amount of ink remaining in the ink cartridges installed.
- Access a Solutions and assistance facility where you can:
 - Clean and test the ink cartridge nozzles.
 - Automatically align the ink cartridges to improve print quality.
 - Find the address of the manufacturer's web site, where you can access the information needed to purchase new ink cartridges.
 - Access troubleshooting information.
- Access the functions for improving image quality.
- Access the network Settings function for the Wireless (Wi-Fi) mode (Photo Wireless model).
- Access the network Settings function for the Bluetooth (Wi-Fi) mode (Photo Wireless model).

THE PRINTER STATUS MONITOR

The Printer Status Monitor provides information on the current printer status. It is installed permanently on your computer when you install the software contained on the "Installation" CD-ROM. The Status Monitor is displayed automatically at the beginning of a print or copy job and:

- Displays a graphical representation of the percentage of the print or copy job completed.
- Displays the number of the page currently being printed or copied out of the total number of pages in the job.
- Displays a graphical representation of the estimated amount of ink, as a percentage, still available in the colour and black cartridges.
- Allows you to cancel the print or copy job.
- Provides you with the address of the manufacturer's web site where you can access information for purchasing new ink cartridges.

The Status Monitor closes automatically at the end of a print or copy job, but you can close it to its icon on the Windows task bar at any time.

If you decide to close the Status Monitor during a print or copy job, it is automatically redisplayed under the following conditions:

- When the ink remaining in the cartridges is low, or when the cartridges are out of ink. A coloured exclamation mark indicates the cartridge in a low ink condition (colour, black, or both), and the importance of the condition. Pop-ups are displayed with the address of the manufacturer's web site, where you can access information necessary for purchasing new ink cartridges.

The Printer Status Monitor also displays error pop-ups when:

- The printer runs out of paper.
- A paper jam occurs.
- An incorrect paper size is selected.
- The printer is busy with another task.
- The printer is not recognised.
- The ink cartridge carriage is jammed.
- Your printer is not functioning (printer error).

In all of the above error conditions, you can choose whether to continue the print job or cancel, clicking the relative button on the screen.

To access the Toolbox:

- 1 Click your mouse right button on the Olivetti icon on the Windows task bar, or click **Start > Programs** or **All Programs > Olivetti > Olivetti Toolbox**. The Toolbox is displayed.

note: In the Mac OS X environment, the **Toolbox** program is available by clicking on the icon present on the desktop, or by selecting it from the list of programs installed.

The main area of the Toolbox includes the icons representing the different tools available.

Icon	You can:
Print photos	<ul style="list-style-type: none">• Scroll the hard disk or memory of the non-PictBridge/DPOF/digital camera or USB memory (Mass Storage) connected to the computer to find the folder containing the photos to be printed.• Select all the photos stored in the folder or just the individual ones you want, and choose the number of copies to print.• Choose the type of paper to print on, and its size.• Define whether to print photos on a single page, two to a page or four to a page.• Print an index sheet of the photos.• Print the photos selected.
Photocopier	<ul style="list-style-type: none">• Define the type of document to be copied.• Choose the paper on which to print your copy, and its size.• Define the copy quality.• Lighten or darken your copy, and define whether it is colour or black and white.• Select the layout for the copy to be printed: make multiple copies of the same image (or of several images) on a single page; make poster format copies defining the number of pages onto which to adapt the copied image, reproduce the copied image the number of times required without resizing the image, or simply print the copied image onto a page.• Enlarge or reduce the document or photo to be copied, or automatically adjust its size so that it fits onto the selected paper size.• Select the number of copies to make.
Scan to file	<ul style="list-style-type: none">• Scan a preview of the document or photo placed on the scanner glass.
Scan to application	<ul style="list-style-type: none">• Use selection handles to delimit the area of the preview image that you want to scan.
Scan to email	<ul style="list-style-type: none">• Rotate, flip, enlarge or reduce the preview image.
Scan to fax	<ul style="list-style-type: none">• Define the type of document to be scanned, and whether it is in full-colour, shades of grey or black and white.• Define the resolution, colour depth, brightness and contrast of the scanned image.
	Depending on the tool selected: <ul style="list-style-type: none">• Scan to file, save the scanned image in a TIFF (.tif), bitmap (.bmp) or JPEG (.jpg) format in the Olivetti folder specially created for scanning by Toolbox.• Scan to application, scan the document or photo to an application of your choice (such as a graphics program, word processor or desk-top publisher).• Scan to email, attach the scanned document or photo, in compressed .jpg format, to an e-mail message opened by the default e-mail application of your computer.• Scan to fax, scan the document or photo, in compressed .jpg format, to a fax application of your choice.

The Toolbox main interface screen also provides links to Help, Solutions and assistance, and Settings.

Link	You can:
Help	<ul style="list-style-type: none">• Read more information on the currently displayed topic.
Solutions and Assistance	<ul style="list-style-type: none">• Clean and test the ink cartridges.• Automatically align the ink cartridges. See "Aligning the Ink Cartridges From the Toolbox".• Find the address of the manufacturer's web site, where you can access information for purchasing new ink cartridges.• Access troubleshooting information.
Settings	<ul style="list-style-type: none">• Change the Toolbox default settings.

PRINTING FROM YOUR APPLICATION USING PRINT PROPERTIES

- 1 With the document or photo open in the application you are running, click **File > Print** to open the **Print** dialogue box.
- 2 Click **Preferences** or **Properties**, depending on your operating system. The printer driver user interface screen is displayed, allowing you to use your all-in-one printer as indicated in the following table.

Preferences/Properties:	You can:
Paper/Quality	<ul style="list-style-type: none">• Set manually if the document to be printed consists of black text or line art only, a combination of black text, colour graphics or photos, or photos only. Alternatively, set automatic detection of the original as a combination of black text, colour graphics or photos.• Select the type of paper you want to use, and its size.• Define the size, in either inches or millimetres, of any customised paper you want to use.• Print borderless photos when coated paper, glossy paper or postcard format is selected.• Select manual paper loading, bearing in mind that if you load paper of a smaller size than that set, the printer ejects the paper and prompt you to load paper of the size set.• Select print output quality according to your requirements.• Set photo printing in true-life colour (Photo Quality) when photo paper is loaded and Photo is selected for document type.• Set B/W or Colour printing, depending on your original document type.• Define the number of copies to print, and whether or not to start printing from the last page first.
Layout	<ul style="list-style-type: none">• Select to print the individual pages of your document, or photos, in a single page layout.• Select to print multiple pages on a single sheet of paper, fitting 2, 3, 4 or 8 pages of your document, or photos, onto a single sheet.• Define the order in which multiple pages must be inserted onto a sheet of paper. Define whether or not a border is to be inserted around the images on the single sheet of paper.• Select to print multiple pages as a poster, expanding the contents of a single page over more than one sheet of paper.• Define the number of sheets onto which to print the poster image. Decide whether or not to insert a border around each image.• Return the screen settings to their factory default values, or save the settings so they are applied to your next print job.

Preferences/Properties:**You can:**

Ink Levels

- View the estimated amount of ink left in the black and colour ink cartridges.
- Link directly to the Toolbox Maintenance screen where you can view maintenance and troubleshooting information.
- Link directly to a screen providing the address of the manufacturer's web site, where you can access information for purchasing new ink cartridges.

SCANNING AN ORIGINAL FROM YOUR APPLICATION

- 1 Open the top cover and place the document or photo you want to scan face down on the scanner glass. Make sure the upper left corner of the front of the item aligns with the upper left corner of the scanner glass. For more information see "Placing Your Document on the Scanner Glass".
- 2 Scan the image from the application you are using. The scanner driver user interface screen is displayed with a low resolution preview of the document or image on the left-hand side of the screen.

You can:

- Use selection handles to delimit the area of the preview image you want to scan.
 - Rotate, flip, enlarge or reduce the preview image.
 - Scan a new preview if you accidentally removed the original from the scanner glass.
 - Launch your final scan according to the settings you have made.
- On the right-hand side of the scanner driver interface screen, customise your scan settings as indicated in the following table:

Scanner Driver**You can:**

Standard

- Define whether the document to be scanned consists of black text or line art only, a combination of black text, colour graphics or photos, or just photos, and set the scan resolution at 150 dpi, 300 dpi or 600 dpi respectively.
- Select whether to scan in full colour at 24 bits/pixel, in grey at 8 bits/pixel or in black and white at 1 bit/pixel.
- Return the screen settings to their factory default values, or save the settings so they are applied to your next print job.

Custom

- Select the resolution at which you want to scan.
- Select the colour depth, that is the number of distinct colours that can be represented in number of bits.
- Lighten or darken the image you want to scan.
- Increase or decrease the contrast of the image to be scanned.
- Activate a filter to smooth the image, for example when scanning magazine pages.
- Return the screen settings to their factory default values, or save the settings so they are applied to your next print job.

SCANNING AN ORIGINAL FROM THE PRINTER FRONT PANEL

- 1 Open the top cover and place the document or photo you want to scan face down on the scanner glass and aligned with the upper left corner. For more information see "Placing Your Document on the Scanner Glass".
- 2 Press the **Scan** button on your printer front panel. A pop-up is displayed with the following Toolbox tools: Scan to file, Scan to application, Scan to e-mail and Scan to fax. Select where you want to send the scanned image by clicking on the corresponding tool icon. See "Printing, Copying and Scanning From the Toolbox".

The scanner driver user interface screen is displayed with a low resolution preview of the document or image on the left-hand side of the screen. You can:

- Use selection handles to delimit the area of the preview image you want to scan.
 - Rotate, flip, enlarge or reduce the preview image.
 - Scan a new preview if you accidentally removed the original from the scanner glass.
 - Launch your final scan according to the settings you have made.
- On the right-hand side of the scanner driver interface screen, customise your scan settings as indicated in the following table:

Scanner Driver	You can:
Standard	<ul style="list-style-type: none">• Define whether the document to scanned consists of black text or line art only, a combination of black text or line art, colour graphics or photos, or just photos, and therefore scan at 150 dpi, 300 dpi or 600 dpi respectively.• Select whether to scan in full colour at 24 bits/pixel, in grey at 8 bits/pixel or in black and white at 1 bit/pixel.• Return the screen settings to their factory default values, or save the settings so they are applied to your next print job.
Custom	<ul style="list-style-type: none">• Select the resolution at which you want to scan.• Select the colour depth, that is the number of distinct colours that can be represented in number of bits.• Lighten or darken the image you want to scan.• Increase or decrease the contrast of the image to be scanned.• Activate a filter to smooth the image, for example when scanning magazine pages.

HOW TO SET PARAMETERS TO IMPROVE PHOTO PRINT QUALITY

- 1 Open the **“Toolbox”** program to access image quality improvement functions.
- 2 Select the **“Print photo”** item to apply a correction filter.
- 3 With a mouse click, select the photo in the screen listing to print applying an image correction filter.
- 4 Apply the correction filter you want by clicking on the checkbox before it.
Different correction settings are available and depend on the results you want to achieve.
You can, for example, improve detail definition, by applying suitable contrast to the image and other effects.
- 5 To print the modified photo, click on the **“Print”** button.
You can define the number of copies to print before clicking on the Print button.

SETTING PARAMETERS FOR WI-FI CONNECTION (WIFI MODEL)

To connect the printer to the computer via a pre-existing wireless network, the network characteristics must be known: network name, wireless connection mode and encryption settings (WEP, EAP PSK).

For further information consult the “Wifi Info” guide.

note: For information regarding Wi-Fi parameters, consult the network administrator.

note: Check the Firewall settings which could prevent printer recognition.

See the chapter “Firewall Settings”.

note: The Toolbox software with the Wi-Fi settings is compatible with the Windows 2000/XP environment. In the Macintosh version OS X 10.2 (or higher) environment, it can be run from the system desktop from the list of programs available, or double clicking on the toolbox document in the folder where the printer software was previously installed.

Enable Wireless

Wireless communication mode

ADHOC (peer to peer) channel

infrastructure

Wireless network name

Authentication

open system shared key

Encryption

WEP key 1

WEP key 2

WEP key 3

WEP key 4

alphanumeric hexadecimal

Enter the network parameters so that the printer can be recognised on the network, making sure that the Wi-Fi network on which the printer is to be installed is operative.

The wireless settings required are: SSID (network name) of the network used, wireless channel (only ad hoc mode) used by the computer; communication method, WEP key used by the wireless network.

note: The desktop computer or portable with wireless network connection support (only for ad hoc mode) must be functioning and correctly configured.

note: If you have just purchased a portable or desktop computer with wireless capabilities: SSID (network name) of the network used; wireless channel; communication method, WEP password used by the wireless network.

The network parameter definition fields are described below:

- **Enable wireless:** To enable or disable wireless communication; if disabled, the printer can be accessed in any case via the USB connection.
- **Wireless communication mode:** You can select the Wi-Fi network connection type, which can be:
 - **ADHOC (Peer-to-Peer) (pre-defined setting):** The printer communicates directly with the computer without passing through an access point or basic station. Each wireless peripheral in an ad hoc network must have a wireless network adapter. The adapter allows each peripheral to communicate with the other network peripherals.
Use of ad hoc mode is usually restricted to simple, relatively small, wireless networks as performance tends to deteriorate considerably following connection of six peripherals in the network.
 - **Infrastructure (access point):** The printer communicates with network computers through a wireless access point. The access point acts as a central hub or gateway connecting wireless peripherals.
In infrastructure mode, all wireless communications between network peripherals pass through an access point. Each wireless network peripheral must have a wireless network adapter to connect to the access point.
 - **Channel:** Indicates the path on which the digital information travels. By default, the channel is selected automatically, however you can indicate a specific channel to improve data reception/transmission in the case of disturbances or interference (AD-HOC).
- **Wireless network name (SSID):** Indicates the name of the wireless connection to which the printer must belong. The precise name of the network must be declared in order to add the printer to the existing group of network devices.
- **Authentication:** Selecting this mode, you can connect to other devices in the wireless network. Each device can have a specific access key which depends on network type.
 - **Open system:** When the network devices do not have access protections and the network is therefore open for any type of connection.
 - **Shared key:** When network devices have common network access protection.
 - **EAP PSK (Infrastructure):** EAP means Extensible Authentication Protocol and uses the PSK algorithm. A single-direction authentication protocol, which authenticates the client using a password protected by the PSK algorithm. PSK (Pre-Shared Key) uses manually-entered passwords or keys to permit protection. PSK is designed for easy installation by the user at home or in the small office.
- **Encryption:** Type of protection that can be activated on the network. A network with open system authentication does not protect users on the basis of their identity, but generally requires entry of the correct SSID.
 - **WEP:** This network could use WEP (Wired Equivalent Privacy) encryption to provide a first level of protection against occasional, indiscrete users. Up to 4 WEP keys are available: **WEP key 1, WEP key 2, WEP key 3, WEP key 4.** The protection keys may be alphanumeric or hexadecimal.
 - **WPA:** In Infrastructure mode with EAP/PSK authentication, WPA encryption is used. This mode provides an improved, safer method of protection compared with WEP.

Declaring Network Addresses

After declaring network type, you must enter the parameters for printer recognition that must comply with the TCP/IP network protocol specifications; therefore, network address (IP), subnet mask and gateway.

note: You are advised to save or print this Configuration page as the data is important for any subsequent settings. However, you can always display this page opening the **Toolbox** program, selecting the “Wireless” network settings or from the menu **Start > Programs > SIMPLE_WAY Wi-Fi > Configuration**.

Network	<input checked="" type="checkbox"/> manual IP configuration
host name	0AW00A0C579E033
IP	192 . 168 . 30 . 100
subnet mask	255 . 255 . 255 . 0
default gateway	192 . 168 . 30 . 1
idle timeout	60 [seconds]
primary WINS server	192 . 168 . 30 . 2
secondary WINS server	192 . 168 . 30 . 3
MDNS	
service name	SIMPLE_WAY photo wireless (00A0C579E033)
domain name	0AW00A0C579E033.local
<input type="button" value="Send setting"/>	

Described below are the network address definition fields:

- **Manual IP configuration:** This is necessary when a DHCP server that assigns a network address automatically is not available. In this case, manual configuration is necessary and consists in entering the network addresses available (IP, subnet mask, gateway).
- **Host name:** The name of the printer on the network.
- **IP, subnet mask, default gateway:** The univocal names of the network parameters, those required by TCP/IP (Transmission Control Protocol/Internet Protocol standard, a communications protocol that defines the method of data transmission to network peripherals). Virtually, all modern operating systems offer TCP/IP assistance, and most large networks use the TCP/IP protocol for network traffic. Indicate the IP address, subnet mask and the pre-defined Gateway, maintaining the same class of addresses as the Wireless router or access Point.
- **Idle timeout [seconds]:** Indicates the length of time the peripheral waits to receive data on the network (this depends on the characteristics of the network, and in particular its speed).
- **Primary and secondary WINS Server:** Indicate the characteristics of any WINS type servers present on the network for managing peripherals.
- **MDNS:** Multicast Domain Name Server. Used with local and AD HOC networks that do not use central DNS servers. To execute service names using this method, an alternative DNS called mDNS is used. Using mDNS, the computer identifies and uses any printer connected to the LAN. It can also work with any other peripheral enabled for Ethernet displayed on the network. In this case, declare the service name and domain name.
note: The MDNS method is particularly useful for connection in a Macintosh environment. Refer to the OS X 10.2 (or higher) system for further information.

USING THE WEB SERVER (WIFI MODEL)

Permits simple, trouble-free management of a printer (set as network peripheral). This function is available only if the Wireless connection (Wi-Fi mode) is activated from the Toolbox program. Using the internet (WEB) browser, you can check status, configure network parameters and access printer functions.

When using the printer network mode, you must be careful when entering network keys in order to be able to use it correctly.

The network keys that can be set are of WEP (Wired Equivalent Privacy) or WPA types.

WPA stands for Wi-Fi Protected Access. This method provides interoperable protection based on standards promoting a considerable increase in the level of data protection and access control on wireless LANs. To improve data encryption, WPA uses TKIP (Temporal Key Integrity Protocol). For stricter user authentication, WPA implements EAP/PSK (Extensible Authentication Protocol).

note: WPA supports two basic solutions: Enterprise and Home/ SOHO. In the Enterprise environment with IT resources, WPA access is used together with an authentication server to manage and control centralised access. In a Home/SOHO environment, WPA is executed in a special home mode called PSK (Pre-Shared Key) which uses manually-entered passwords or keys for protection. PSK is designed for simple installation by the user at home or in the small office.

note: Toolbox software with Wi-Fi settings is compatible with the Windows 2000/XP, Macintosh OS X 10.2 version or higher environment.

Accessing Web Server Mode

Follow the procedure described below to access "Web Server" mode:

- 1 From the system browser, enter the printer IP address in the browser address field (if this has been set manually), or from the menu **Start > Programs > SIMPLE_WAY Wi-Fi > Configuration**.
note: In the Macintosh OS X 10.2 (or higher) environment, you can run it from **Toolbox > Settings > Settings Wi-Fi**.
The "Web Server" mode **Login Page** is displayed.
In the **Login Page** navigation menu, enter the **Password**.
- 2 The printer Web page can be used to:
 - Check printer status
 - Display network statistics
 - Set network configuration
 - Scan pages on the network.
- 3 Click **Apply** to confirm your settings.
note: The default password is "**admin123**".
note: When modifying the wireless network settings or IP address from the Web Server, the connection may be lost. If this occurs you may need to use the new settings to reconnect. If the printer loses the network connection, you may need to restore the pre-defined values and reinstall the software.
note: You cannot disable TCP/IP (Transmission Control Protocol/ Internet Protocol).
This protocol is necessary for communications in "Web Server" mode.

Entering WEP keys

To enter WEP keys in the Web Server mode proceed as follows:

- 1 Click on the **Networking/Wireless** tab.
- 2 Go to the Encryption section where you can add Static coding parameters (WEP).
- 3 Select Activated.
- 4 Enter the WEP keys used by the network. Select whether the keys entered are Alphanumeric or Hexadecimal. Select the key to be used for encrypting the data for transmission.
- 5 Click on **Apply** to save the keys in the printer.
note: If you have forgotten the WEP keys, display these via the access point. If the access point does not display the keys, reconfigure the network and assign new keys.

Entering WPA Coding Data

The WPA (Wi-Fi Protected Access) function allows interoperable protection based on standards promoting a considerable increase the level of data protection and access control in wireless LANs. To increase data encryption, WPA uses TKIP (Temporal Key Integrity Protocol). For stricter user authentication, WPA implements EAP (Extensible Authentication Protocol). If WPA is used on the network, PSK (Pre-Shared Key) authentication is used.

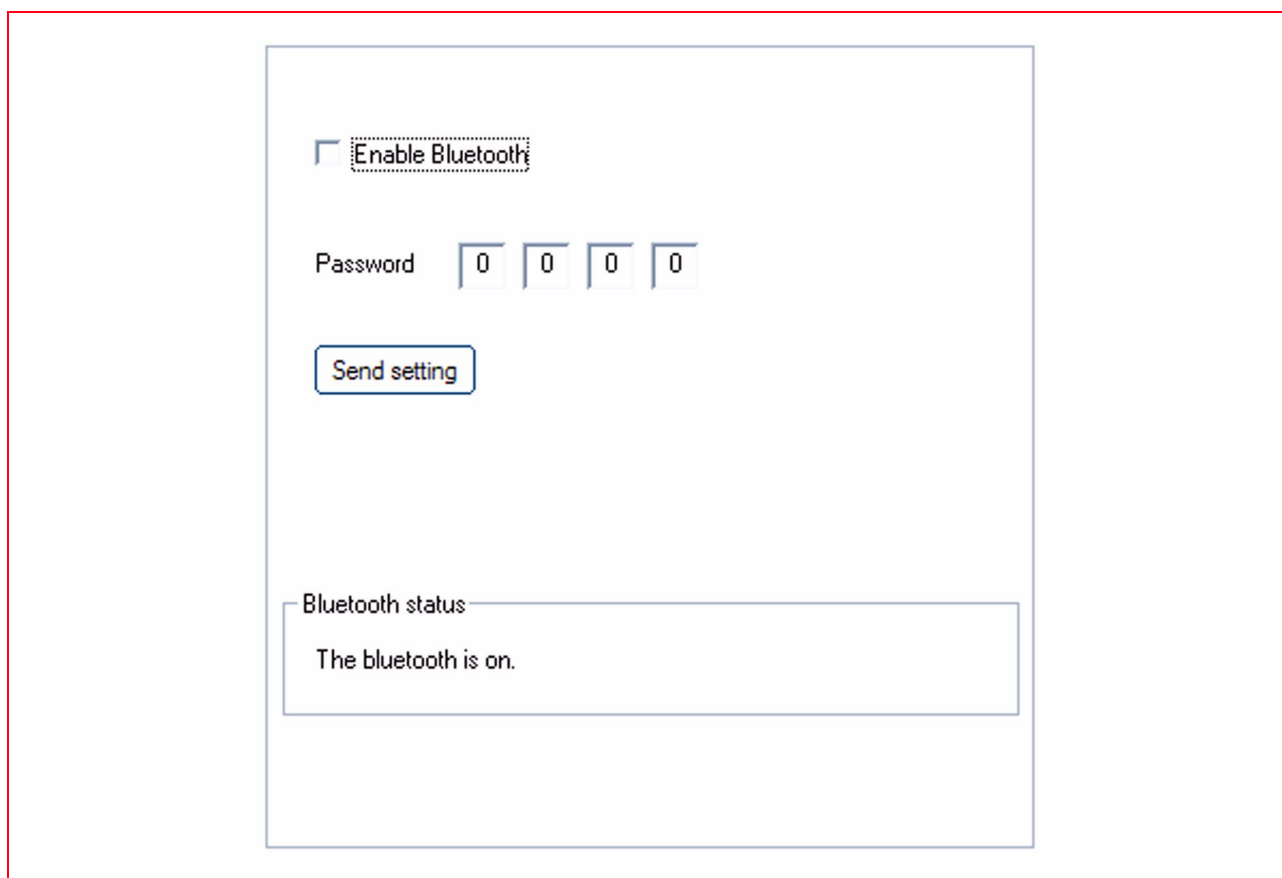
In Web Server mode, proceed as follows:

- 1 Click on the **Networking** tab.
- 2 In the network Settings page, select the Wireless tab.
- 3 Go to the Authentication section and click on Advanced configuration. The wireless communication mode page is displayed.
- 4 Select Infrastructure and click on **Next**. A page with the name of the wireless network is displayed.
- 5 Select a network name (SSID) from the list of networks identified, or enter the name of a new wireless network. Click on **Next**. The Wireless authentication page appears.
- 6 Select EAP/PSK. Enter a password Phrase (with a length of between 8 and 63 characters including spaces) that will be used by the software to generate a pre-shared key.
note: All network peripherals must use the same phrase as password.
- 7 Carry out the instructions displayed to configure the printer for the type of authentication and coding selected. On completion, click **Next**. The Configuration preview page is displayed.
- 8 Check that the information is correct, click **Apply** to save the keys in the printer.

BLUETOOTH SYSTEM SETTINGS (BLUETOOTH MODEL)

To use the Bluetooth connection, you must have a Bluetooth mobile phone or a computer. If you are using a computer, switch it on and insert the "Installation" CD-DOM in the drive.

- 1 Click **Next >** on the screen displayed, and follow the instructions.
- 2 Carry out installation in USB mode. Connect the USB cable (not included) to the printer and to the personal computer only when requested.
- 3 On completing USB installation, open the **Toolbox** program (**Start > Olivetti > Toolbox**).
note: For the Mac OS X 10.2 version (or higher), run the **Toolbox** program from the system finder in the list of available programs.
- 4 Click on the "**Settings**" button to access Bluetooth parameter configuration.
Activate Bluetooth mode and press "**Send Settings**" to the printer. Wait for the new settings to be automatically received (this may take several minutes).
The printer is now able to work in a Bluetooth environment.



Described below are the Bluetooth device setting fields:

- **Enable Bluetooth:** To enable or disable Bluetooth connectivity.
- **Password:** Enter a protection password for the Bluetooth connection.
The default password is 0000, and allows any .jpg file transmitted by a Bluetooth device (cellphone, personal computer, etc.) positioned within a radius of 10 meters from the printer to be directly printed.
- **Send Settings:** To save the data in the printer.

4 INK CARTRIDGES

CHECKING INK LEVELS

REPLACING INK CARTRIDGES

ALIGNING INK CARTRIDGES

EXCHANGING BLACK AND PHOTO INK CARTRIDGES USING THE GARAGE

CHECKING INK LEVELS

- To check charge status of a cartridge and know when it must be replaced, check the ink levels:
- 1 Displaying the level indicators in the Ink Levels sheet of the Preferences or Properties dialogue window of the print driver proceed as indicated below:
 - a With a document open in the application you are running, click on **File > Print**. The Print dialogue window is displayed.
 - b Click on **Preferences** or **Properties**, depending on the operating system are using. The printer driver user interface screen is displayed.
 - c Click on **Ink Levels sheet**. The two level indicators indicate the estimated amount of ink left in the cartridges, expressed as percentage.
 - 2 Scanning a document or photo, the scanner driver displays the level indicators in the lower part of the screen page. In the Ink Levels sheet, the indicators show the percentage amount of ink left in the cartridges.
 - 3 From the Toolbox, displaying the level indicators in the lower part of the Toolbox application main screen page, or in the New ink cartridges dialogue window:
 - a Click the mouse right button on the Olivetti icon in the Windows Application bar and select the Toolbox, or click on **Start > Programs** or **All programs > Olivetti > Olivetti Toolbox**. The Toolbox window is displayed.
note: In the Macintosh environment, run the Toolbox program from the desktop, or from the list of programs installed.
 - b Click on **Solutions and Assistance**.
 - c Click on **Select** and select New ink cartridges. In the New ink cartridges dialogue window, the level indicators show the amount of ink left in the cartridges, expressed as percentage.
 - 4 From the windows displayed by the printer Status Monitor during printing or copying which indicate the amount of ink left. For further information, see "The Printer Status Monitor".
 - 5 From the Windows Start menu:
 - a Click on **Start > Programs** or **All programs > Olivetti > SIMPLE_WAY New ink cartridges**. The Printer Status Monitor is displayed.

Information Required to Purchase New Ink Cartridges

To guarantee correct functioning of the printer and high print quality, you must use only original Olivetti cartridges.

Use the following codes when purchasing cartridges:

- Black ink cartridge, code **IN501**
- Three-colour ink cartridge, code **IN503**
- Photographic ink cartridge, code **IN505**
- High capacity black ink cartridge, code **IN502**
- High capacity three-colour ink cartridge, code **IN504**
- High capacity photographic ink cartridge, code **IN506**.

CAUTION: Cartridges can be used once only.

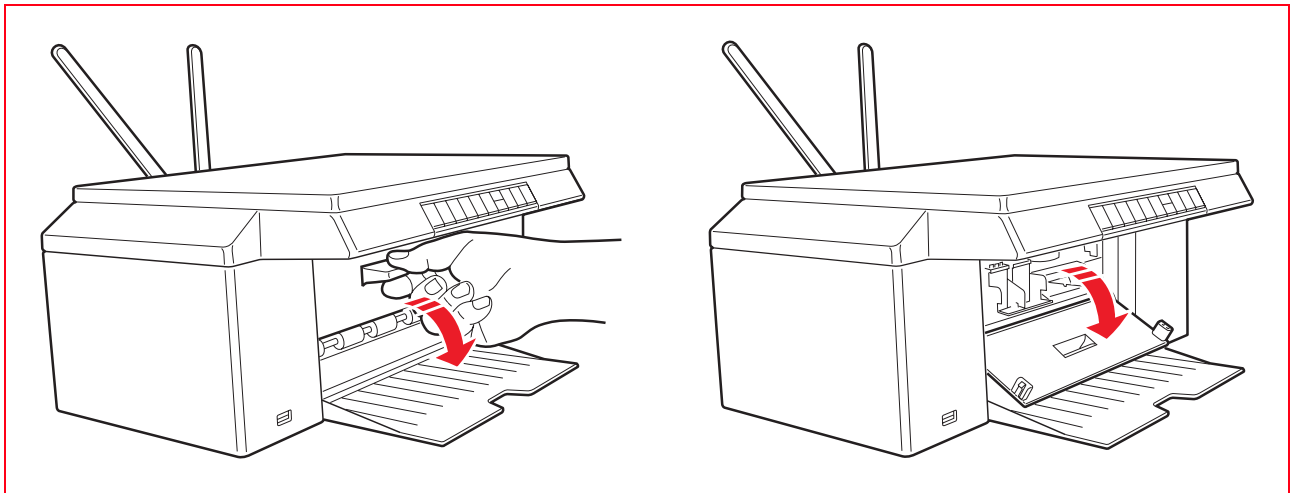
REPLACING INK CARTRIDGES

Before carrying out the procedures described in this section, read and scrupulously adhere to the information provided in the "Safety Instructions" section at the start of this guide.

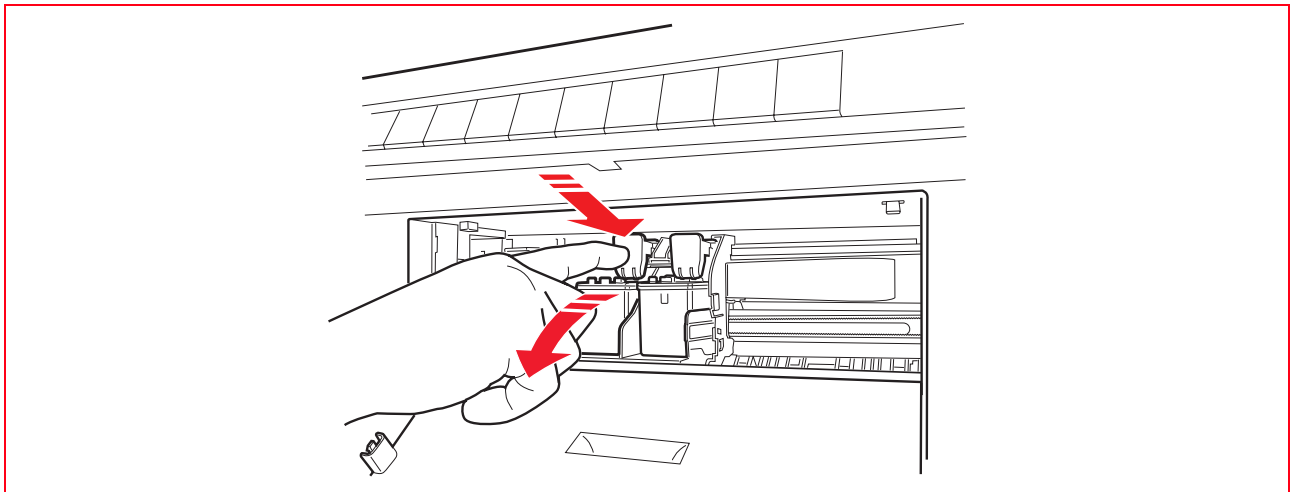
For information regarding purchasing new cartridges from the manufacturer, consult "Solutions and Assistance" in the Toolbox. To access the Toolbox, see "The Toolbox". To guarantee correct printer functioning and a high print quality level, you must use only original cartridges.

note: For normal print operations, use the black and colour cartridges, while for printing photographs, use the photographic and colour ink cartridges. Printing time will be longer but the final quality obtained is the best that can be obtained from the printer.

- 1 Switch on the printer pressing the On/Off button.
- 2 Make sure that A4 format plain paper has been loaded. See "Loading Paper".
- 3 Open the front hatch to access the compartment containing the cartridges. The printer automatically moves the heads carrier to the centre of the carriage to facilitate cartridge insertion.

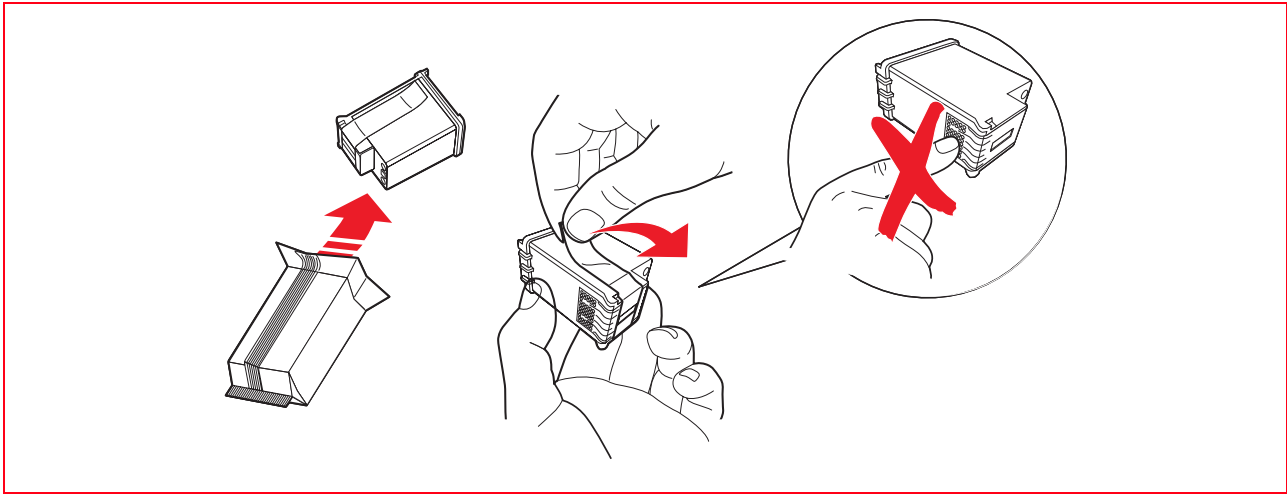


- 4 Press the tab that fastens the cartridge to be replaced inwards and remove the cartridge.

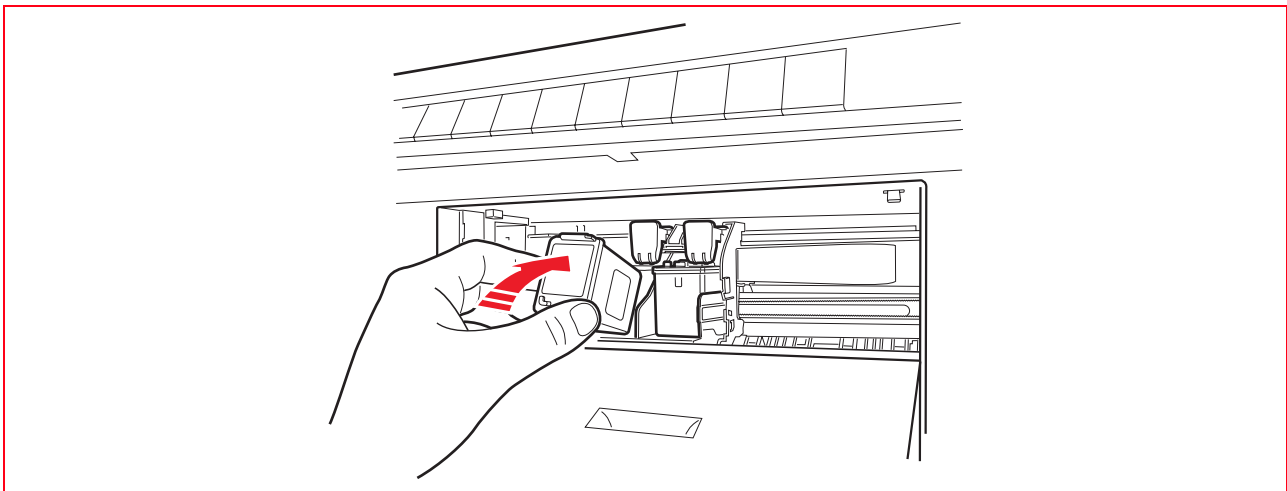


note: At this point, you can replace the black or photographic ink cartridge installed in the left-hand carrier with the new cartridge, or the colour cartridge in the right-hand carrier by pressing on the right-hand fastening tab.

- 5 When installing a new cartridge, remove it from its packet and then remove the protection tape applied to the nozzles. DO NOT TOUCH THE CONTACTS or the nozzles of the cartridge. Hold the cartridge from the sides.

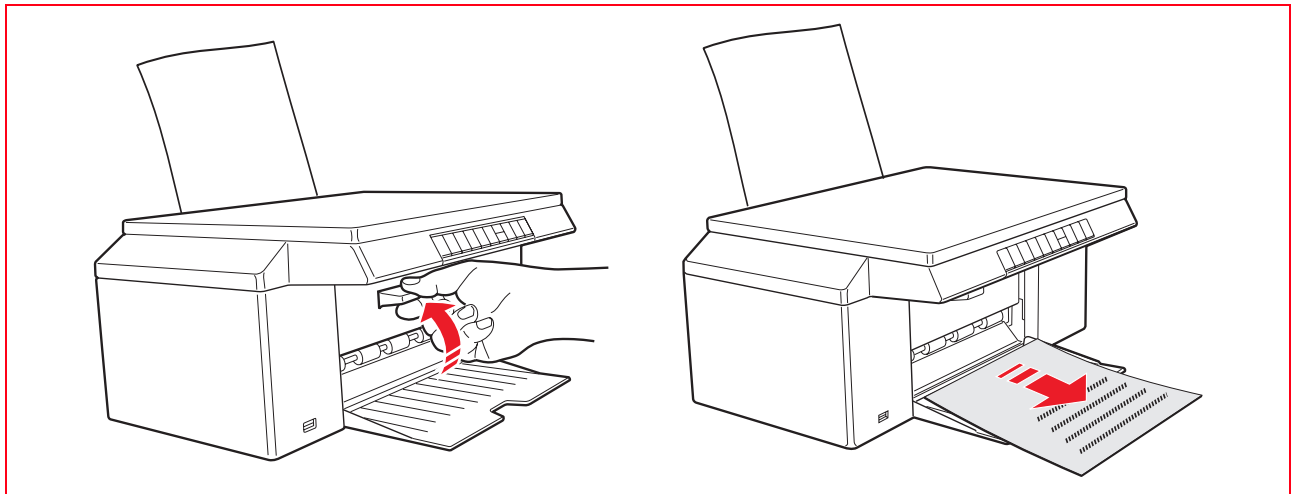


- 6 Holding the cartridge with the nozzles facing down and with the contacts facing towards the rear part of the printer, insert the colour ink cartridge into the right-side carrier and the photographic or black ink cartridge into the left-side carrier. Push the cartridge in until it is secured by the tab.



- 7 On completion, after replacing the cartridge(s), close the front hatch.

- 8 When a new cartridge is installed, the printer performs a cartridge automatic recognition procedure. On completion, it prints an alignment sheet to indicate that the newly installed cartridge has been aligned automatically. For further information, see "Aligning Ink Cartridges".



ALIGNING INK CARTRIDGES

The ink cartridges are automatically aligned by the printer whenever a new ink cartridge is installed. However, you need to align the ink cartridges manually if you find that the edges of the printed characters are still not clear, or when lines appear wavy even after cleaning the ink cartridge nozzles. See "Aligning Ink Cartridges From the Toolbox".

Ink Cartridge Alignment Page

The ink cartridge alignment page contains a series of line patterns to show that the printer has automatically aligned the newly installed ink cartridge. It is printed:

- Automatically, once the scanner unit is closed after installing new ink cartridges.
- Directly from the **Toolbox** installed on your personal computer, when you select the "**Print the alignment page**" option from the Toolbox Maintenance screen.

Aligning Ink Cartridges From the Toolbox

When the edges of the printed characters are still not clear, or when the lines appear wavy, even after cleaning the ink cartridge nozzles:

- 1 Click your mouse right button on the Windows task bar, or click **Start > Programs** or **All Programs > Olivetti > Olivetti Toolbox**. The Toolbox is displayed.
note: In the Mac OS X environment, the **Toolbox** program is available by clicking on the icon present on the desktop, or selecting it from the list of programs installed. The Toolbox window is displayed.
- 2 Click **Solutions and Assistance**, then Select the "Print the alignment page" option.
- 3 Click the **Print** button.
- 4 When the alignment page is printed, the ink cartridges have been aligned. Click **Close** to return to the Toolbox main screen.

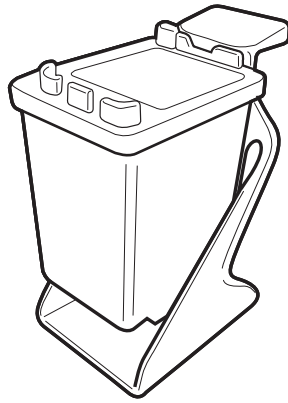
EXCHANGING BLACK AND PHOTO INK CARTRIDGES USING THE GARAGE

Your printer comes with an ink cartridge garage that holds the unused black or photo ink cartridge. Use the photo ink cartridge together with the colour ink cartridge to obtain best results when printing photographs. Use the black and colour cartridge to print normal black and white or colour documents.

note: When using the black cartridge, store the photo ink cartridge in the garage, and vice versa.

To exchange the photo and black ink cartridges to best suit your printing requirements:

- 1 Open the lid of the garage and extract the ink cartridge.
- 2 Remove the ink cartridge being used from its right carrier and insert the cartridge that you now want to use. See "Replacing Ink Cartridges".
- 3 Place the ink cartridge just removed from the printer into the garage, with its contacts facing downward.
- 4 Place the lid back on the garage and press it downward gently until it is securely closed.



5 MAINTENANCE AND TROUBLESHOOTING

CLEANING YOUR PRINTER

CLEANING THE INK CARTRIDGE NOZZLES

TROUBLESHOOTING

CLEARING PAPER JAMS

CLEANING YOUR PRINTER

CAUTION: Do not clean the inside of your printer and do not use stain removers, acetone-based products, liquid or aerosol cleaners. Doing so could damage your printer case and scanner glass.

Cleaning the Printer Casing, Scanner Cover Underside and Scanner Glass

- 1 Clean the printer casing using a soft dry cloth or moistened in warm water to wipe dust, dirt or smears off the outer case of your printer only.
- 2 Clean gently the white underside of the top cover with a soft dry cloth, or moistened in warm water.
- 3 Clean the scanner glass with a soft cloth moistened with water or with a glass cleaning solution.

CLEANING THE INK CARTRIDGE NOZZLES

Clean the ink cartridge nozzles when:

- White or colour lines appear on your printouts.
- Colours are faded, or do not print in parts or at all.
- Vertical lines in printout are jagged.

To clean the ink cartridge nozzles:

- 1 Make sure A4 size paper is loaded onto the printer. See "Loading Paper".
- 2 Click your mouse right button on the Windows task bar, or click **Start > Programs** or **All Programs > Olivetti > Olivetti Toolbox**. The Toolbox is displayed.
note: In the Mac OS X environment, the **Toolbox** program is available by clicking on the icon present on the desktop, or selecting it from the list of programs installed. The Toolbox window is displayed.
- 3 Click **Solutions and Assistance**.
- 4 Select the "Clean and Test Nozzles" option.
- 5 Click the **Print** button. The printer automatically cleans the nozzles and prints a test page.
- 6 Check the quality of the printed output with the example displayed on the computer monitor. If you are not satisfied with its quality, click the Clean Again button to repeat the nozzle cleaning procedure.
- 7 When finished, click the **Close** button to return to the Toolbox main user interface screen.

TROUBLESHOOTING

Problems During Printer Setup

Before reading this section:

- 1 Make sure **the printer is properly connected to a working grounded electrical outlet** compliant with your printer's power requirements (100 - 240 Vac, 50 - 60 Hz) and that it is turned on.
- 2 If you are using your printer with a personal computer, make sure that you have turned on both your printer and computer.
- 3 Make sure the computer's operating system is Windows 98 SE, ME, 2000 or XP, or MAC OS X 10.2 or later.

Problem	Possible Cause	Corrective Action
Your printer does not turn on.	<ul style="list-style-type: none">• The printer's power cord is not properly connected to the printer and/or to the power outlet.• The power outlet may not be working.	<ol style="list-style-type: none">1 Make sure that both ends of the power cable are properly connected.2 Make sure that the grounded power outlet is working.
You insert the "Installation" CD-ROM into your computer CD drive and the installation program does not start automatically.	<ul style="list-style-type: none">• An operating system incompatible with the CD-ROM software may be running on the personal computer.• The auto-run feature is disabled.• Your personal computer cannot find setup.exe on the CD-ROM.	<ol style="list-style-type: none">1 Make sure the personal computer is running Windows 98 SE, ME, 2000 or XP, or MAC OS X 10.2 or later. <ul style="list-style-type: none">• In the Windows environment:<ol style="list-style-type: none">1 Remove the "Installation" CD-ROM and reinsert it again into the CD-ROM drive, with the written label upwards.2 Select Start > Run and then click Browse.3 Find the CD-ROM drive identifier and click Open.4 Select Setup and click Open. The setup.exe file is displayed in the dialogue box.5 Click OK and then follow the instructions displayed• In the Macintosh environment:<ol style="list-style-type: none">1 Switch on the computer and insert the "Installation" CD-ROM (c) in the drive.2 Double click on the CD-ROM icon displayed to start software installation and follow the instructions provided on the screen.
Your printer's name is not available when you select File > Print from an application. The printer is not shown in the Printer folder in the Control Panel.	<ul style="list-style-type: none">• The printer driver was not installed correctly.	<ol style="list-style-type: none">1 Close all applications currently open.2 Reinstall the printer software as instructed by the Setup Diagram, or as indicated in the step above.

Problem	Possible Cause	Corrective Action
When connecting the printer to the computer with the USB cable, the Plug and Play wizard did not terminate.	<ul style="list-style-type: none"> The computer did not find the printer driver. 	<ol style="list-style-type: none"> 1 Remove the "Installation" CD-ROM from the drive and re-boot the computer. 2 Place the "Installation" CD-ROM in the drive with the written label facing upwards. 3 Reinstall the printer software as instructed in the Setup Diagram, or as indicated in the step above.
When connecting your printer to the computer with the USB cable, the New Hardware Wizard is not displayed on the computer monitor.	<ul style="list-style-type: none"> The computer is running an incompatible operating system. The USB cable may not be properly connected between the printer and computer. 	<ol style="list-style-type: none"> 1 Make sure the computer is running Windows 98 SE, ME, 2000 or XP, or MAC OS X 10.2 or later. 1 Turn off your printer and computer, then unplug the USB cable from these two devices. 2 Reattach the USB cable to the two devices following the instructions in the Setup Diagram. Turn on the printer first, followed by the computer.

Problem	Possible Cause	Corrective Action
	<ul style="list-style-type: none"> The computer may not be enabled for USB operation. 	<ul style="list-style-type: none"> In the Windows environment: <ol style="list-style-type: none"> Click Start > Settings > Control Panel. Double click on the System icon. Click on the Device Manager or Hardware tab, then click on the Device Manager button. Click the Plus (+) sign next to the USB (Universal Serial Bus) Controller option. <ul style="list-style-type: none"> If USB host controller and USB root hub are present, USB is enabled. If they are not present, read your computer manual for information on how to enable a USB connection. In the Macintosh environment: <ul style="list-style-type: none"> From the Control Panel, check the system characteristics and the presence of an active, functioning USB connection. Re-install the USB drivers for Macintosh consulting the system manufacturer's documentation provided.

Problems Turning On the Printer

Problem	Possible Cause	Corrective Action
The printer does not turn on when you press the Power On/Off button on the front panel.	<ul style="list-style-type: none"> The power cord is not properly attached to the printer and/or to a working electrical outlet. 	<ul style="list-style-type: none"> Unplug the power cord from the printer and from the electrical outlet and then plug it back. Make sure that the electrical outlet is working by attaching another appliance that you know works into it, then turn on the appliance.
Individual LEDs on the front panel come on.	<ul style="list-style-type: none"> Specific printer error as signalled by the LED. 	<ul style="list-style-type: none"> Check the corrective action for the corresponding LED that is explained in "Meaning of LEDs on Front Panel".

Printing Problems

Problem	Possible Cause	Corrective Action
Your printer does not print when you click on the Print icon on the task bar of the application you are using.	<ul style="list-style-type: none"> Your printer is not set as the default printer. 	<ul style="list-style-type: none"> In the Windows environment: <ol style="list-style-type: none"> Click Start > Settings > Printers and Fax. Right-click on your printer's icon and select Set as Default. In the Macintosh environment: <ol style="list-style-type: none"> Re-install the software furnished with the printer and check the print and spooler settings of the Mac OS X. Operating system.
	<ul style="list-style-type: none"> Your printer is not properly connected to the computer. 	<ol style="list-style-type: none"> Turn off your printer and computer, then unplug the USB cable from these two devices. Reattach the USB cable, then turn on the printer first followed by your computer.
The printing stops in the middle of a print job.	<ul style="list-style-type: none"> The paper is jammed. 	<ol style="list-style-type: none"> Clear the paper jam. See "Clearing Paper Jams". Press the Cancel button to reset the error condition. The print job continues from the next page.
Horizontal streaks are printed.	<ul style="list-style-type: none"> The ink cartridges are dirty. 	<ul style="list-style-type: none"> Clean the ink cartridges. See "Cleaning the Ink Cartridge Nozzles".

Problem	Possible Cause	Corrective Action
The printed characters are not properly defined.	<ul style="list-style-type: none"> The ink cartridges are no longer aligned. 	<ul style="list-style-type: none"> Align the ink cartridges from your computer. See "Aligning the Ink Cartridges From the Toolbox".

Copying/Scanning Problems

Problem	Possible Cause	Corrective Action
The printer or scanner makes unusual noises during operation.		<ul style="list-style-type: none"> Turn off the printer and then turn it back on again by pressing the On/Off button.
Horizontal streaks are printed.	<ul style="list-style-type: none"> The ink cartridges are dirty. 	<ul style="list-style-type: none"> Clean the ink cartridges. See "Cleaning the Ink Cartridge Nozzles".
A completely black copy is output.	<ul style="list-style-type: none"> Faulty Contact Image Sensor. 	<ul style="list-style-type: none"> Contact the field engineering service.

Meaning of LEDs on Front Panel

The power-on button, which is used to switch the printer ON and OFF, may also flash to indicate printer status:

- If it flashes during printing, this indicates that the computer is sending or receiving data.
- If it flashes and a flashing "E" appears on the LCD display, this indicates an error condition. Possible reasons for errors are listed below and may be displayed in detail using the "Status Monitor" application available on the Status bar, or in the list of programs in the Olivetti folder.

Problem	Possible Cause	Corrective Action
A flashing "E" is shown on the LCD display which indicates the number of copies.	<ul style="list-style-type: none"> A print or copy operation has been started but the paper in the printer has run out. 	<ul style="list-style-type: none"> Load paper. See "Loading Paper".
	<ul style="list-style-type: none"> The format of the paper loaded does not match the format selected by the Toolbox application or by the PictBridge compatible digital camera connected to the printer. 	<ul style="list-style-type: none"> Load the correct format. See "Loading Paper".
	<ul style="list-style-type: none"> The format of the paper loaded is not A4 which is required to print the ink cartridge alignment sheet after cartridge replacement. 	<ul style="list-style-type: none"> Load the correct format of paper. See "Loading Paper".
	<ul style="list-style-type: none"> Paper jam. 	<ul style="list-style-type: none"> Remove the jammed paper. See "Clearing Paper Jams".
On/off button flashes.	<ul style="list-style-type: none"> The printer is receiving data from the digital camera connected. 	<ul style="list-style-type: none"> Indicates correct data transfer. No corrective action is therefore required.

Problem	Possible Cause	Corrective Action
The USB status LED on the front panel does not switch on although a USB device is connected to the printer.	<ul style="list-style-type: none"> The USB device connected to the USB connector on the front panel is not recognised by the printer. 	<ul style="list-style-type: none"> Connect a USB device compliant with the printer requirements as regards connecting USB devices.

note: If the printer is used from the front control panel and an error has occurred. To restore normal operating conditions, eliminate the error and then repeat the operation

CLEARING PAPER JAMS

- 1 Take firm hold of the jammed paper and pull it out gently from the place where it is jammed. If the paper tears, make sure you remove all the torn pieces from the printer.
- 2 Press the “**Cancel**” (“**C**”) button on the front panel to clear the error condition.
note: If the paper jam occurred when copying or printing without a computer, the print job continues from the next page.
 If the jam occurred when using a computer, a pop-up screen is displayed allowing you either to continue printing from the next page or to cancel the print job.

6 TECHNICAL CHARACTERISTICS

GENERAL SPECIFICATIONS

PRINTER SPECIFICATIONS

COPIER SPECIFICATIONS

SCANNER SPECIFICATIONS

WI-FI SYSTEM SPECIFICATIONS

PAPER SPECIFICATIONS

GENERAL SPECIFICATIONS

General Specifications

Memory capacity	<ul style="list-style-type: none">• 2 MB Read-Only Memory (ROM).• 32 MB Random Access Memory (RAM).
Dimensions and weight	<ul style="list-style-type: none">• Height: 7.34 in (18.6 cm)• Width: 17 in (43.3 cm)• Depth: 13 in (33.2 cm)• Weight: 12.1 lbs (5.5 kg)
Power supply unit	<ul style="list-style-type: none">• Auto-sensing universal power supply unit.
Input voltage	100 - 240 Vac, 50-60 Hz, 1.2 A Maximum grounded.
Output voltage	32 Vdc, 1,3 A
Connectivity	<ul style="list-style-type: none">• High-speed USB 2.0 on rear panel for connection to personal computer.• PictBridge-compliant USB 1.1 on front panel for connecting digital camera.
Temperature ranges	<ul style="list-style-type: none">• Operating: 15 °C to 35 °C• Storage: -5 °C to +45 °C• Transportation: -15 °C to +55 °C
Humidity ranges	<ul style="list-style-type: none">• Operating: 15% to 85%, non-condensing• Storage: 15% to 85%, non-condensing• Transportation: 5% to 95%, non-condensing.
Software and documentation	<ul style="list-style-type: none">• Printer and scanner drivers (WIN/MAC)• Toolbox application (WIN/MAC)• User documentation (WIN/MAC)• Additional software (WIN).
Minimum system requirements for personal computer connected	Operating system: Microsoft Windows 98 SE, ME, 2000 or XP, or MAC OS X 10.2 or later. RAM: 128 MB (256 MB preferred). Free hard disk space: 500 MB.

Printer Specifications

Printing technology	Bubble ink-jet.
Printing system	Two disposable ink cartridges: <ul style="list-style-type: none">• 3-colour (Cyan, Magenta, Yellow)• Black• 3 photographic colours. For specific printing requirements, the photographic ink cartridge (sold separately) can be used instead of the black ink cartridge.
Print resolution	<ul style="list-style-type: none">• Up to 4800 dpi optimised.
Advanced print functions	Applied from Toolbox program or from photographic printing control panel. Optimisation of image quality: <ul style="list-style-type: none">• Using proprietary software from "Toolbox" program.
Margins	Borderless on all types of special paper for ink-jet printers.
Direct printing mode	Connecting a PictBridge or DPOF device on the front USB port from: <ul style="list-style-type: none">• USB memory (Mass Storage)• Photo Index. Available from computer: <ul style="list-style-type: none">• Photo Index.

COPIER SPECIFICATIONS

Copier Specifications

Resolution	<ul style="list-style-type: none">• Up to 1200 x 1200 dpi.
Copy modes	<ul style="list-style-type: none">• In stand-alone mode<ul style="list-style-type: none">– 100%, fit to page– Type of paper/speed: normal paper and photographic paper– Contrast adjustment: light, normal, dark• From the Toolbox program:<ul style="list-style-type: none">– Reduction/enlargement from 25% to 400%, clone, poster mode.
Maximum number of copies	<ul style="list-style-type: none">• Up to 99 when copying from Toolbox application installed on the personal computer.• Up to 9 when copying in stand-alone.

SCANNER SPECIFICATIONS

Scanner Specifications

Type	Flatbed, CIS (Contact Image Sensor).
Optical resolution	<ul style="list-style-type: none">• Up to 600 dpi (Simple Way model)• Up to 1200 dpi Simple Way Bluetooth model and Simple Way Wifi model)• Interpolated: up to 9600 dpi.
Maximum scan area	8.46 in (Wide) x 11.69 in (High).
Functions	<ul style="list-style-type: none">• Photocopier• Scan to file• Scan to email• Scan to application• Scan to fax.

Wi-Fi System Specifications

Wireless interface	<ul style="list-style-type: none">• The wireless connection system is integrated in the printer and uses the IEEE 802.11 b/g protocol: data is transmitted using high frequency radio waves.• The wireless system includes a network adapter and radio wave system. The USB connection and Wi-Fi connection can be used at the same time.
Transmission Speed	<ul style="list-style-type: none">• 54 Mbps on 2.4 GHz band, if available.
Functions available	<ul style="list-style-type: none">• All functions can be used by the cable and wireless connections (only reading of the memory card is not available).
Web server	<ul style="list-style-type: none">• For simple printer management, use the web browser for checking status, and defining and modifying parameter settings.
Communication mode	<ul style="list-style-type: none">• Peer-to peer: The integrated wireless network connection can connect directly with a PC equipped with wireless functions for an ad hoc mode connection.• The peer-to-peer connection method is used for small/medium web connections, as the increasing the number of network connections reduces the quality and range of the connection. This type of connection is set by default.• Infrastructure: The printer is connected to a network of PCs via an access point which is connected to a central hub or gateway connecting all the wireless peripherals, or with an Ethernet connection.• To install and configure the printer in Infrastructure mode a USB cable connection is necessary. However this cable can be removed once the network connection parameters have been configured for wireless mode.
Security Settings	<ul style="list-style-type: none">• SSID (Service Set Identifier).• WEP (Wired Equivalent Privacy) key. Via Web Server mode you can install WPA (WiFi Protected Access) keys in PSK (Pre Shared Key) mode Home/SOHO. note: To enter the network protection keys, you must access EWS before installing the software via the USB connection.

PAPER SPECIFICATIONS

Supported Paper Types

Paper type	Paper weight	Maximum feed capacity
A4 Plain paper	70 to 80 g/m ²	100 sheets
A4 Plain paper	> 80 to 90 g/m ²	More than 50 sheets
A4 Coated paper	100 to 170 g/m ²	50 sheets
A4 Transparencies	170 g/m ²	20 sheets
A4 Photo paper	160 to 280 g/m ²	20 sheets
A4 Glossy paper	160 to 180 g/m ²	20 sheets
A4 T-shirt transfers	150 to 180 g/m ²	5 sheets
A4 ink-jet labels	80 to 110 g/m ²	20 sheets
A4 Banners	80 to 90 g/m ²	20 banners, fed manually
10x15 cm Note Cards	130 to 280 g/m ²	20 cards
10x15 cm and 13x18 cm Photo paper	170 to 280 g/m ²	20 sheets
Envelopes	75 to 100 g/m ²	10 envelopes

Supported Paper Formats and Sizes

Format	Size	Format	Size
A4	8.27 x 11.7 in. 210 x 297 mm	2L	5 x 7 in. 127 x 177.8 mm
A5	5.85 x 8.27 in. 148.5 x 210 mm	US # 10	4.12 x 8.85 in. 105 x 225 mm
US Letter	8.5 x 11 in. 216 x 279 mm	C5 envelope	6.38 x 9.0 in. 162 x 229 mm
US Legal	8.5 x 14 in. 216 x 356 mm	DL envelope	4.33 x 8.66 in. 110 x 220 mm
US Executive	7.25 x 10.5 in. 184 x 267 mm	C6 envelope	4.46 x 6.37 in. 114 x 162 mm
US Folio	8.5 x 13 in. 215.9 x 330.2 mm	B6	4.92 x 6.93 in. 125 x 176 mm
US Statement	5.5 x 8.5 in. 139.7 x 215.9 mm	B5 envelope	6.93 x 9.84 in. 176 x 250 mm
B5	7.2 x 10.1 in. 182 x 256 mm	Monarch	3.875 x 7.50 in. 98.43 x 190 mm
4x6" cards	4 x 6 in. 102 x 152 mm	Chokey 3 envelope	4.72 x 9.25 in. 120 x 235 mm
5x8" cards	5 x 8 in. 127 x 203 mm	Chokey 4 envelope	3.54 x 8.0 in. 90 x 205 mm
A6	4.135 x 5.85 in. 105 x 148.5 mm	Chokey 40 envelope	3.54 x 8.8 in. 90 x 225 mm
13 x 18 cards	5.12 x 7.09 in. 130 x 180 mm	Karugata 3 envelope	8.5 x 11 in. 216 x 277 mm
Index cards	3 x 5 in. 76.2 x 127 mm	Karugata 4 envelope	7.75 x 10.5 in. 197 x 267 mm
Hagaki card	3.9 x 5.8 in. 100 x 148 mm	Karugata 5 envelope	7.75 x 10.5 in. 190 x 240 mm
L	3.5 x 5 in. 89 x 127 mm	Banner (A4)	8.27 x 223.8 in. 210 x 5938 mm

note: All the formats listed above are detected automatically by the printer; sheets of particular size can be used by entering them in a specific window of the print and copy drivers (personalised print format).

INDEX

A

- Activating Bluetooth 10
 - Mac OS X 10
 - Windows 10
- Addresses
 - network 28
- Aligning ink cartridges 37
- Alignment page 37

B

- Bluetooth 11
 - activation 10
 - icon 5
 - installing 11
 - settings 31

C

- Cleaning your printer 40
- Copying a document 16

D

- Digital camera, connecting 9
- DNS 28

E

- EAP 27, 30
- Encryption 27
- Error pop-ups, Status Monitor 21
- Exposure bed 4
 - extractable cover 4

F

- Front panel 5

I

- Ink cartridge carrier 4
- Ink cartridges
 - aligning 37
 - checking ink levels 34
 - cleaning nozzles 40
 - exchanging 38
 - garage 38
 - order codes 34
 - purchasing 34
 - replacing 35
- Installing Bluetooth
 - Mac 11
 - Windows 11
- Installing printer
 - Bluetooth mode 10
 - Wi-Fi network 12
- IP configuration, manual 28

K

- Keys
 - WEP 30
 - WPA 30

L

- LED meanings 45
- Link Toolbox
 - Help 23
 - Settings 23
 - Solutions and Assistance 23

M

- MDNS 28
- mDNS 28

N

- Network address definition
 - fields 28
- Nozzles, cleaning 40

O

- Olivetti Toolbox 37
- Open systems 27

P

- Paper
 - clearing jams 46
 - loading 7
 - types 8
- Paper guide 4
- Paper support 4
- Paper tray 4
- Photo Index
 - creating 16
 - printing 16
- Photo print quality
 - improving 26
- Power supply 4, 8
- Print properties 23
 - ink levels 24
 - layout 23
 - paper/quality 23
- Print quality 3, 26
- Printer front panel 5
 - Bluetooth icon 5
 - buttons 5
 - LEDs 5, 45
 - states 8, 9
 - USB status LED 5
 - wireless network icon 5
- Printer set up 10
- Printing photos
 - from Bluetooth device 17
 - from DPOF digital camera 17
 - from non-pictbridge/dpof digital camera 17
 - from PictBridge digital camera 16
- Printing problems 44
- Printing, copying and scanning from Toolbox 22
- PSK 27, 29, 30

R

Replacing ink cartridges 33, 35

S

Scanning

- an original 24
- bulky documents 6
- from front panel 24

Scanning Unit 4, 6

Setting up your printer 10

Specifications

- copier 50
- general 48
- paper 52
- printer 49
- scanner 50
- Wi-Fi 51

SSID 27

Status Monitor 21

T

TCP/IP 28

TKIP 29, 30

Toolbox 20, 22

- photocopier 22
- printing photos 22
- scan to application 22
- scan to email 22
- scan to fax 22
- scan to file 22

Troubleshooting 41

- copying/scanning 45
- during printer setup 41
- powering on printer 44
- printing problems 44

U

USB

- error status LED 45
- installation 10
- interface 4

W

Warranty 3

Web Server mode 29

WEP 27, 29

keys 30

Wi-Fi mode

- access point 13
- ad hoc 13
- authentication 27
- connecting printer 13
- encryption 27
- icon 5
- infrastructure 13
- installing printer 12
- setting parameters 26
- shared key 27
- web server function 29

WINS server 28

Wireless mode

- ad hoc 27
- channel 27
- infrastructure 27

WPA 27

- Enterprise solution 29
- Home solution 29

WPA coding data 30

Code: 528013en

OLIVETTI S.P.A. VIA JERVIS, 77 10015 IVREA (TO) ITALY www.olivetti.com